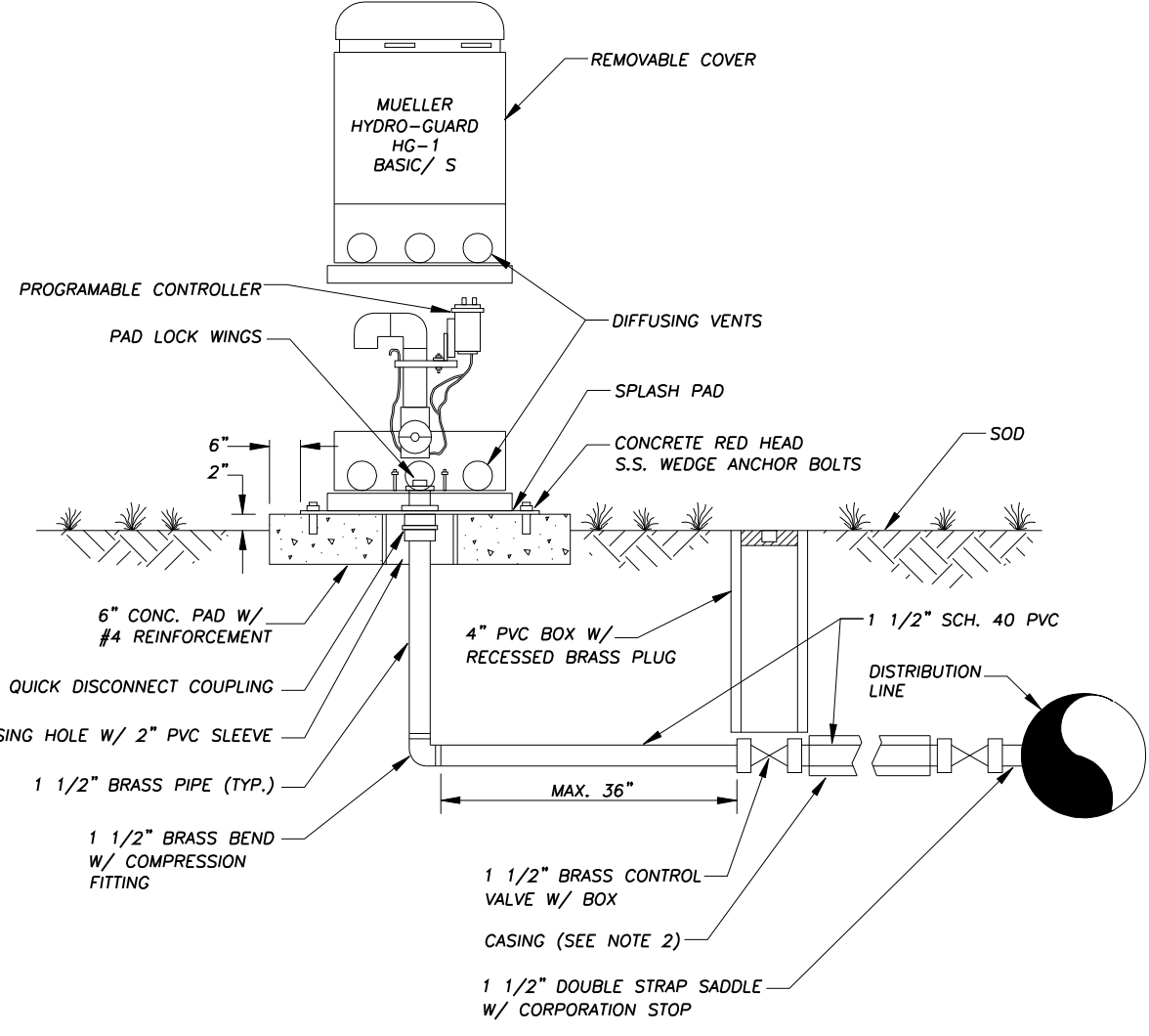


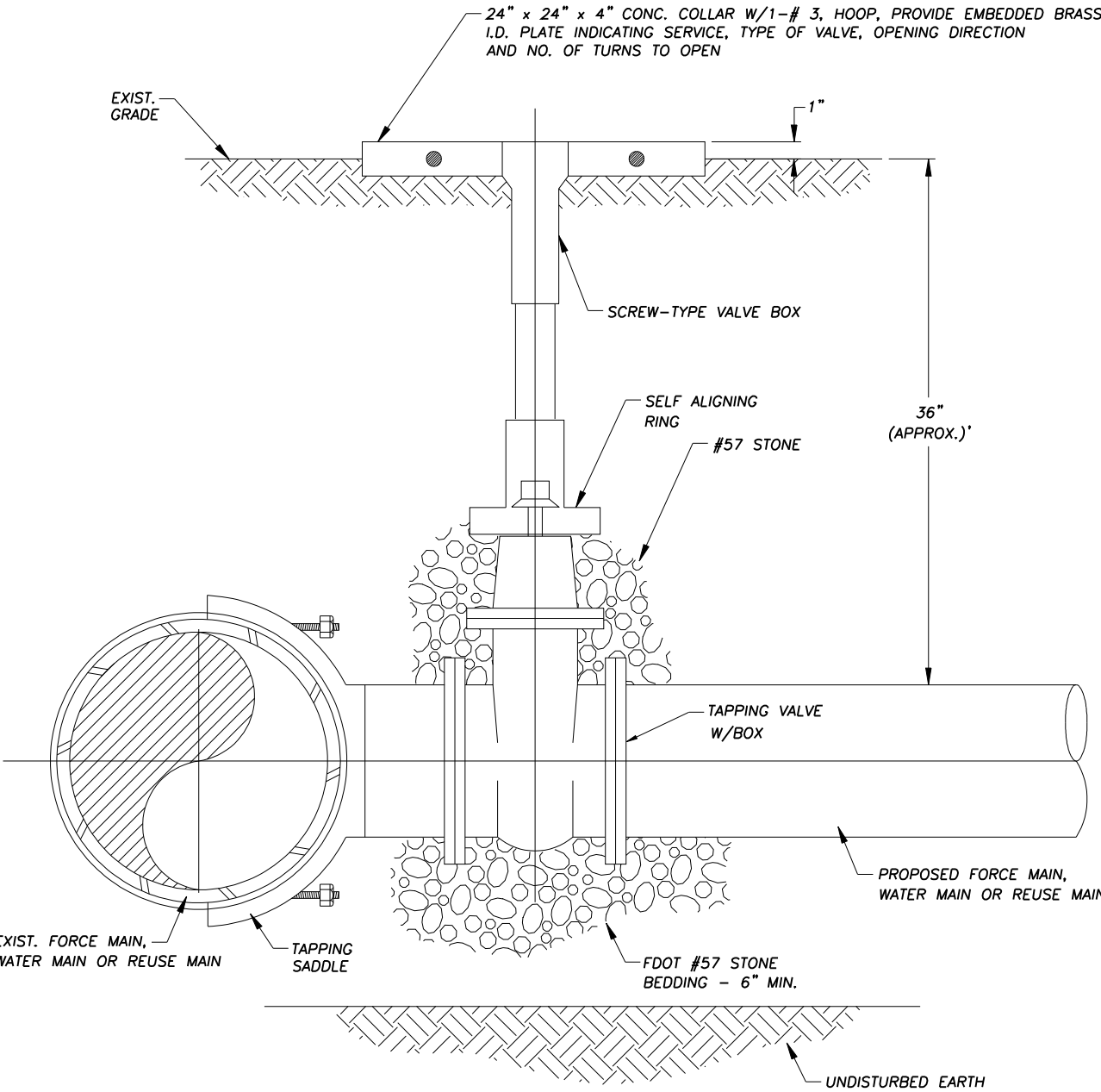
TYPE "A" CROSSING
PIPE DEFLECTION CROSSING

- NOTE:
1. THE SOILS BETWEEN THE NEW MAIN AND THE CONFLICT PIPE SHALL BE COMPACTED TO 98% OF THE MAXIMUM DENSITY AS DETERMINED BY THE LABORATORY MODIFIED PROCTOR TEST, ASTM D 1557.
 2. FOR MINIMUM VERTICAL SEPARATION REQUIREMENTS SEE GENERAL NOTES SHEET GN-1.
 3. LOCATING WIRE REQUIRED: SEE DETAIL W-16.
 4. THE COVER OVER ALL PIPING LESS THAN 24" SIZE SHALL BE A MINIMUM OF 30" IN UNPAVED AREAS AND 36" IN PAVED AREAS WITH A MAXIMUM COVER OF 60" UNLESS APPROVED OTHERWISE BY SJUCD. COVER FOR PIPING 24" SIZE AND LARGER SHALL BE MINIMUM OF 36" (PAVED AND UNPAVED) AND MAXIMUM OF 64" UNLESS APPROVED OTHERWISE BY SJUCD.
 5. SJUCD ONLY ALLOWS 50% OF THE PIPE MANUFACTURER'S RECOMMENDATION FOR JOINT DEFLECTION, BENDING THE PIPE BARREL IS NOT ALLOWED UNLESS OTHERWISE APPROVED BY SJUCD. THE MAXIMUM ARE LISTED IN TABLE BELOW. ONLY MANUAL FORCE CAN BE UTILIZED TO OBTAIN THESE JOINT DEFLECTIONS. ALL OFFSETS ARE BASED ON MINIMUM 20LF OF PIPE LENGTH.

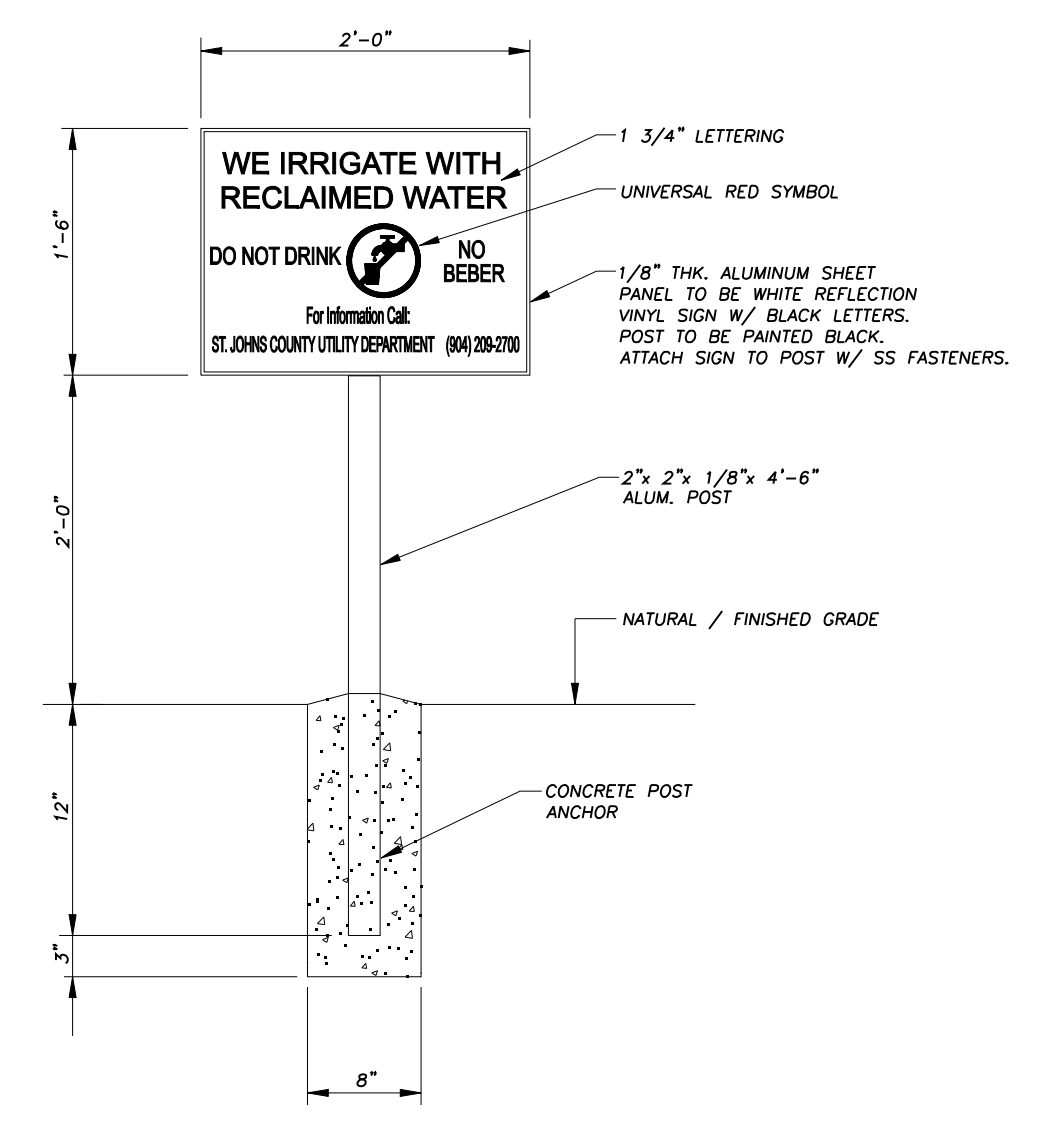
| PVC PIPE SIZE | MAX OFFSET (20LF JOINT) |
|---------------|-------------------------|
| 2" | 30" |
| 4" | 19" |
| 6" | 13" |
| 8" | 10" |
| 10" | 8" |
| 12" | 7" |
| 14" & LARGER | 5" |



- NOTE:
1. 12" MINIMUM CLEARANCE TO BE MAINTAINED BETWEEN AUTOMATIC FLUSHING PAD AND ANY OBSTRUCTION.
 2. FOR INSTALLATION OF SERVICES UNDER DRIVEWAYS AND ROADWAYS, USE MIN. 4" DIAMETER BLACK IRON, PVC SCH 40, OR HOPE SDR 9 CASING. CASING SHALL EXTEND MINIMUM 24" BEYOND EDGE OF PAVEMENT. CASING TO BE SEALED WITH CEMENT. CASING SHALL BE COLOR CODED BLACK, WHITE, BLUE, OR BLUE STRIPED.
 3. AUTOMATIC FLUSHING ASSEMBLY TO BE INSTALLED AS CLOSE AS POSSIBLE TO THE WATER MAIN.
 4. BEDDING (MIN. 4") AND COVER (MIN. 4") OVER SERVICE LINE OR CASING SHALL CONSIST OF FINE GRANULAR MATERIAL. UNSUITABLE MATERIALS SUCH AS MUCK, DEBRIS AND LARGER ROCKS SHALL BE REMOVED WITH 2" MAXIMUM SIZE.
 5. ALL HARDWARE FOR FLANGED CONNECTIONS (BOLTS, ETC.) TO BE STAINLESS STEEL.
 6. THREADED AREAS OF CORPORATION STOP AND OTHER FITTINGS SHALL BE SPIRAL WRAPPED WITH TWO (2) WRAPS OF TEFLON TAPE. ALL BRASS SHALL BE "LEAD FREE".
 7. A 4" THICK COMPACTED 3/4" ROCK BASE IS REQUIRED. THE BASE SHALL EXTEND MINIMUM 2' BEYOND AUTOMATIC FLUSHING ASSEMBLY PAD PERIMETER.



- NOTES:
1. RESILIENT WEDGE GATE VALVE SHALL BE EPOXY COATED.
 2. TAPPING SADDLE SHALL BE STAINLESS STEEL.
 3. SELF-CENTERED ALIGNMENT RING.



RECLAIMED WATER USE/WARNING SIGN

- NOTE:
- EACH DEVELOPMENT, SUBDIVISION, OR COMMERCIAL ESTABLISHMENT, REGARDLESS OF THE NUMBER OF BUILDINGS, SHALL INSTALL RECLAIMED WATER USE WARNING SIGNS AT THE ENTRANCES TO ANY PROPERTIES WHICH USE RECLAIMED WATER. THE SIGNS SHALL MEET THE REQUIREMENTS OF SJUCD DETAILS AND SPECIFICATIONS. THE SIGNS SHALL BE A REQUIREMENT WHETHER SHOWN ON PLANS OR NOT. DIRECTION OF LOCATING SIGNS SHALL BE GIVEN BY THE SJUCD INSPECTOR ON SITE. LANDSCAPING SHOULD BE CONSIDERED WHEN PLACING SIGN.

| REVISIONS | Date | Comments |
|-----------|------------|----------|
| 2015 | REVISION 1 | |

TYPE "A"
PIPE CROSSING
WITH DEFLECTION

PLATE:
W-24

SCALE: N.T.S.

ST. JOHNS COUNTY
UTILITY DEPARTMENT

1205 STATE ROAD 16
ST. AUGUSTINE, FLORIDA 32084
Phone (904) 209-2700 • Fax (904) 209-2802

AUTOMATIC FLUSHING
ASSEMBLY (TYPE A)

PLATE:
W-25

SCALE: N.T.S.

ST. JOHNS COUNTY
UTILITY DEPARTMENT

1205 STATE ROAD 16
ST. AUGUSTINE, FLORIDA 32084
Phone (904) 209-2700 • Fax (904) 209-2802

TAPPING SADDLE
& TAPPING VALVE
DETAIL

PLATE:
W-26

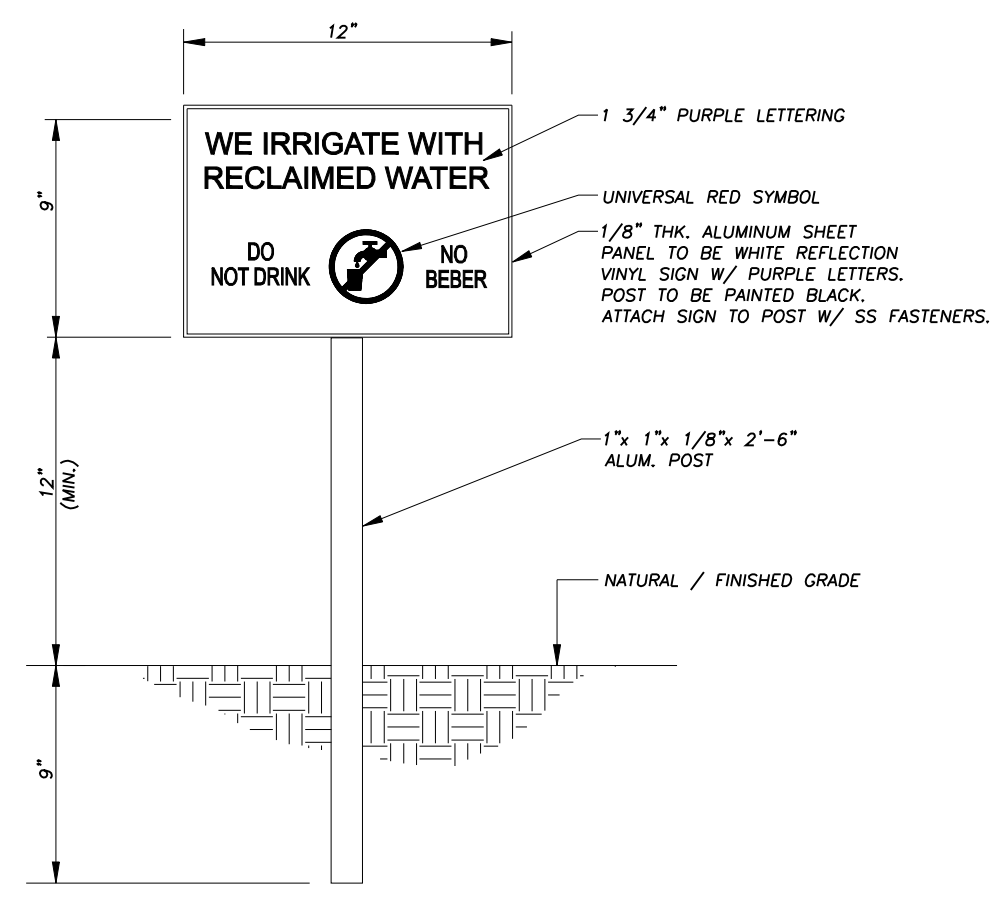
SCALE: N.T.S.

| REVISIONS | Date | Comments |
|-----------|------------|----------|
| 2015 | REVISION 1 | |

RECLAIMED WATER
USE/WARNING SIGN

PLATE:
RW-1

SCALE: N.T.S.



RECLAIMED WATER USE/WARNING SIGN - DIMINUTIVE

- NOTE:
- EACH DEVELOPMENT, SUBDIVISION, OR COMMERCIAL ESTABLISHMENT, REGARDLESS OF THE NUMBER OF BUILDINGS, SHALL INSTALL DIMINUTIVE RECLAIMED WATER USE WARNING SIGNS ALONG SIDEWALKS, WALKING PATHS, AND ASSOCIATED AREAS WHERE STANDING RECLAIMED WATER USE WARNING SIGNS ARE NOT PLAINLY VISIBLE DUE TO DISTANCE OR OTHER NON-VEGETATIVE OBSTRUCTION, OR NOT FEASIBLE. THE SIGNS SHALL MEET THE REQUIREMENTS OF SJUCD DETAILS AND SPECIFICATIONS. THE SIGNS SHALL BE A REQUIREMENT WHETHER SHOWN ON PLANS OR NOT. SIGNS SHALL BE CLEARLY VISIBLE TO RESIDENTS AND GUESTS ENTERING. PROXIMITY TO CURB AND LANDSCAPING SHOULD BE CONSIDERED WHEN PLACING SIGN. SIGN SHALL BE TALLER THAN LANDSCAPING AND NOT BE BLOCKED BY FUTURE GROWTH OF VEGETATION OR DAMAGED BY MAINTENANCE EQUIPMENT. PUBLIC ACCESS COMMON AREAS SHALL ALSO HAVE SIGNS (INCLUDES OFFSITE).

| REVISIONS | Date | Comments |
|-----------|------------|----------|
| 2017 | REVISION 2 | |
| 2017 | REVISION 1 | |

RECLAIMED WATER
USE/WARNING SIGN
DIMINUTIVE

PLATE:
RW-1A

SCALE: N.T.S.

| NO. BY DATE SYMBOL | REVISIONS |
|------------------------|-----------|
| 6. | |
| 5. | |
| 4. | |
| 3. | |
| 2. ETS 2017 REVISION 3 | |
| 1. ETS 2015 REVISION 2 | |

ST. JOHNS COUNTY
UTILITY DEPARTMENT

1205 STATE ROAD 16
ST. AUGUSTINE, FLORIDA 32084
Phone (904) 209-2700 • Fax (904) 209-2802

DESIGNER:
DRAWN BY:
DATE:
CHECKED BY:
DATE:

DESIGN ENGINEER

FLORIDA REGISTRATION NO.

ST. JOHNS COUNTY
UTILITY DEPARTMENT

1205 STATE ROAD 16
ST. AUGUSTINE, FLORIDA 32084-8646
Phone (904) 209-2700 • Fax (904) 209-2702

GENERAL WATER DETAILS

NO. SHEETS

SHEET NO.
GW-4

DRAWING NO.
GW-04.dwg