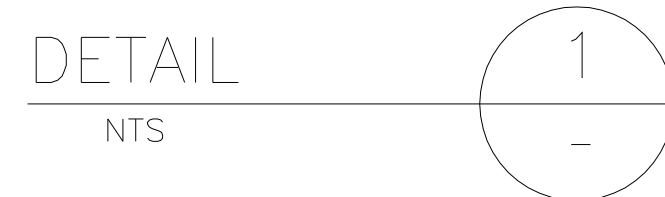
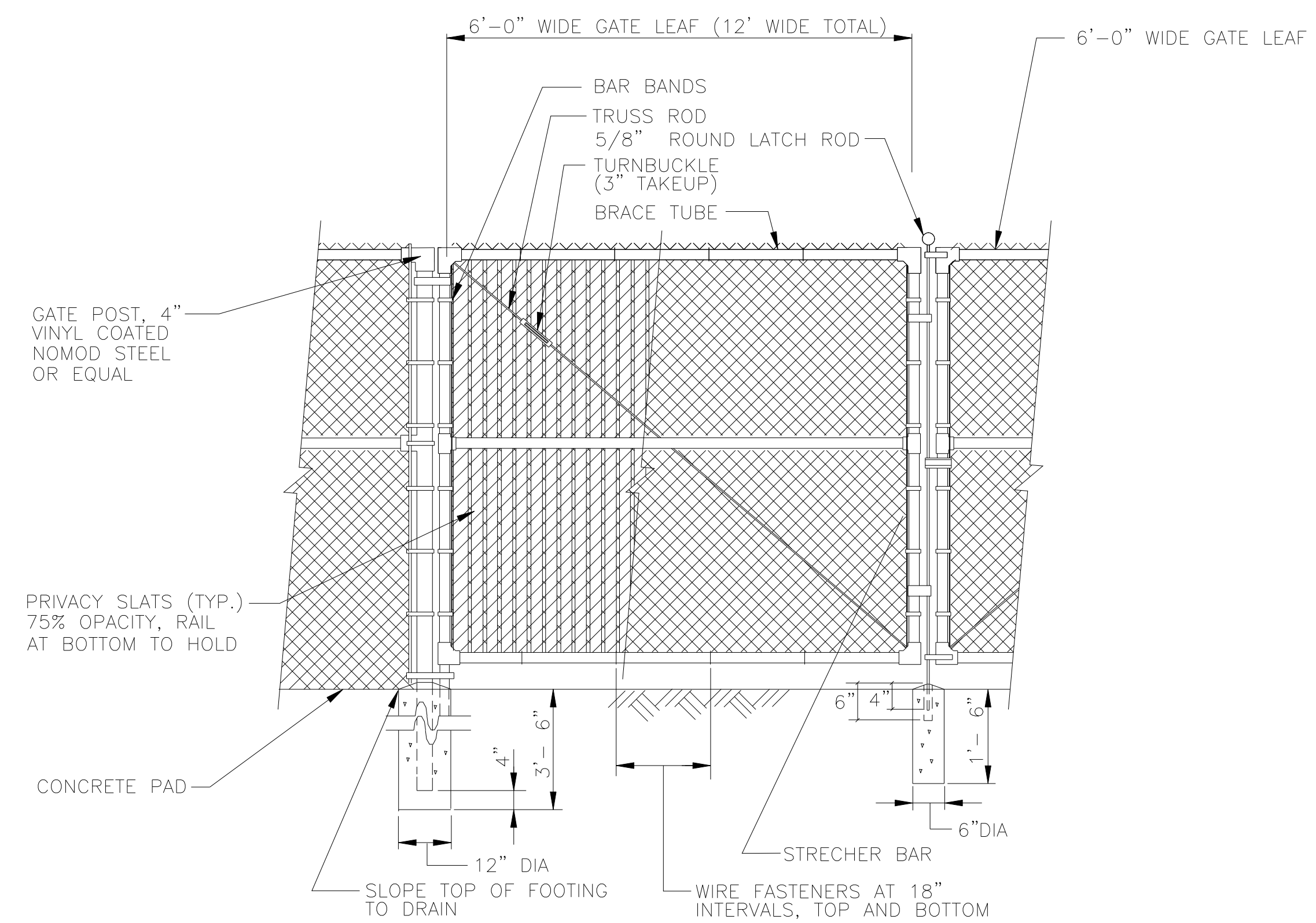


TYPICAL FENCE DETAIL



- NOTES:
1. ALL FENCING AND POSTS SHALL BE GREEN VINYL COATED.
 2. THE LOCK HASP SHALL BE CAPABLE OF ACCEPTING A STANDARD COUNTY PADLOCK.
 3. HEIGHT OF FENCE AT MASTER LIFT STATION SHALL BE 8'.
 4. ALL FENCE POSTS SHALL BE SET WITHIN CONCRETE SLAB WITH 4" MINIMUM CLEARANCE FROM EDGE OF SLAB.
 5. SEE E-102 FOR GROUNDING SYSTEM DETAIL.



CHAIN LINK FENCE-GATE



- NOTE:
1. GATE STOPS SHALL BE INSTALLED TO STOP AND SECURE GATE PROPERLY WHEN IN THE OPEN POSITION.

NO.	BY	DATE	SYMBOL	REVISIONS
6.				
5.				
4.				
3.	ETS	2017		REVISED DRAWING 5/11/07
2.				REVISED DRAWING 9/15/06
1.				

DESIGNER:	
DRAWN BY:	
DATE:	
CHECKED BY:	
DATE:	

DESIGN ENGINEER	
FLORIDA REGISTRATION NO.	



**ST. JOHNS COUNTY
UTILITY DEPARTMENT**
1205 STATE ROAD 16
ST AUGUSTINE, FLORIDA 32084-8646
Phone (904) 209-2700 • Fax. (904) 209-2702

**PUMP STATION
STANDARD FENCING DETAILS**

NO. SHEETS	
SHEET NO.	
DRAWING NO.	PS-F-1