

# Environmental Scan Top Health/Diagnostic Issues

St Johns County Health  
Department

07/04 - 06/05

05/05 - 04/06

# St Johns County Health Dept

- The Top Medical Conditions reported in this scan are actual diagnosis codes utilized for billing purposes from July/04 through 06/05 and May/05 through 04/06.
- Upper Respiratory Illness in first 2 graphs include Pharyngitis, Otitis Media, Bronchitis, Asthma
- This data is not all inclusive, in that it does not count total numbers of all persons seen.
- The totals documented in this report are the complete totals (all patients seen in clinic) of the top diagnoses
- Graph totals presented by Zip Codes do not equal total of patients
- Total Population Data Set: Census 2000 Summary File (SF 3)

# Zip Codes/Population

## Zip Codes:

32033	West of 95, South of 214 And North of 206 Pop: 2,133	32092	West of 95, South of 210 and North of 214 Pop: 6,595
32080	St Augustine Beaches Pop: Included in 32084	32095	North of St Augustine, East of 95 And South of 210/Palm Valley Road Pop: 21,071
32082	Ponte Vedra Area Pop: 27,821	32145	Hastings and Flagler Estates Pop: 3,940
32084	St Augustine/Downtown west to 95 Pop: 20,584	32259	Fruit Cove, Julington Creek North of 210 Pop: 18,087
32086	St Augustine: South of 312 Pop: 22,948		
32085	St Augustine Post Office Box		

# ST. JOHNS COUNTY SCHOOLS 2006 - 2007 SCHOOL YEAR

St. Johns County School District  
 Dr. Joseph Joyner, Superintendent  
 40 Orange Street  
 St. Augustine, FL 32084  
 Ph. (904) 819-7500  
 www.stjohns.k12.fl.us



0 2 4 Miles

Zip Codes
32033
32080
32081
32082
32084
32086
32092
32095
32145
32224
32259

- 1 - Alice B. Landrum Middle School
- 2 - Allen D. Nease High School
- 3 - Bartram Trail High School
- 4 - Bethune-Cookman College (Spuds Campus)
- 5 - Cunningham Creek Elementary School
- 6 - Durbin Creek Elementary School
- 7 - Evelyn Hamblen Center Gaines Alternative Program
- 8 - First Coast Technical Institute St. Johns Technical High School
- 9 - Flagler College
- 10 - Florida School for the Deaf and Blind
- 11 - Fruit Cove Middle School
- 12 - Gamble Rogers Middle School
- 13 - Hastings Youth Academy
- 14 - Hickory Creek Elementary School
- 15 - John A. Crookshank Elementary School
- 16 - Julington Creek Elementary School
- 17 - Katerlinus Elementary School
- 18 - Marjorie K. Rawlings Elementary School
- 19 - Mill Creek Elementary School
- 20 - Murray Middle School
- 21 - Ocean Palms Elementary School
- 22 - Osceola Elementary School
- 23 - Otis A. Mason Elementary School
- 24 - Pedro Menendez High School
- 25 - Ponte Vedra-Palm Valley Elementary School
- 26 - R.B. Hunt Elementary School
- 27 - Sebastian Middle School
- 28 - South Woods Elementary School
- 29 - St. Augustine High School
- 30 - St. Johns Regional Juvenile Detention Center
- 31 - St. Johns River Community College
- 32 - Switzerland Point Middle School
- 33 - The Webster School
- 34 - Timberlin Creek Elementary School
- 35 - W.D. Hartley Elementary School
- 36 - University of St. Augustine

Map Printed: 10/03/2005  
 Project ID: 11351

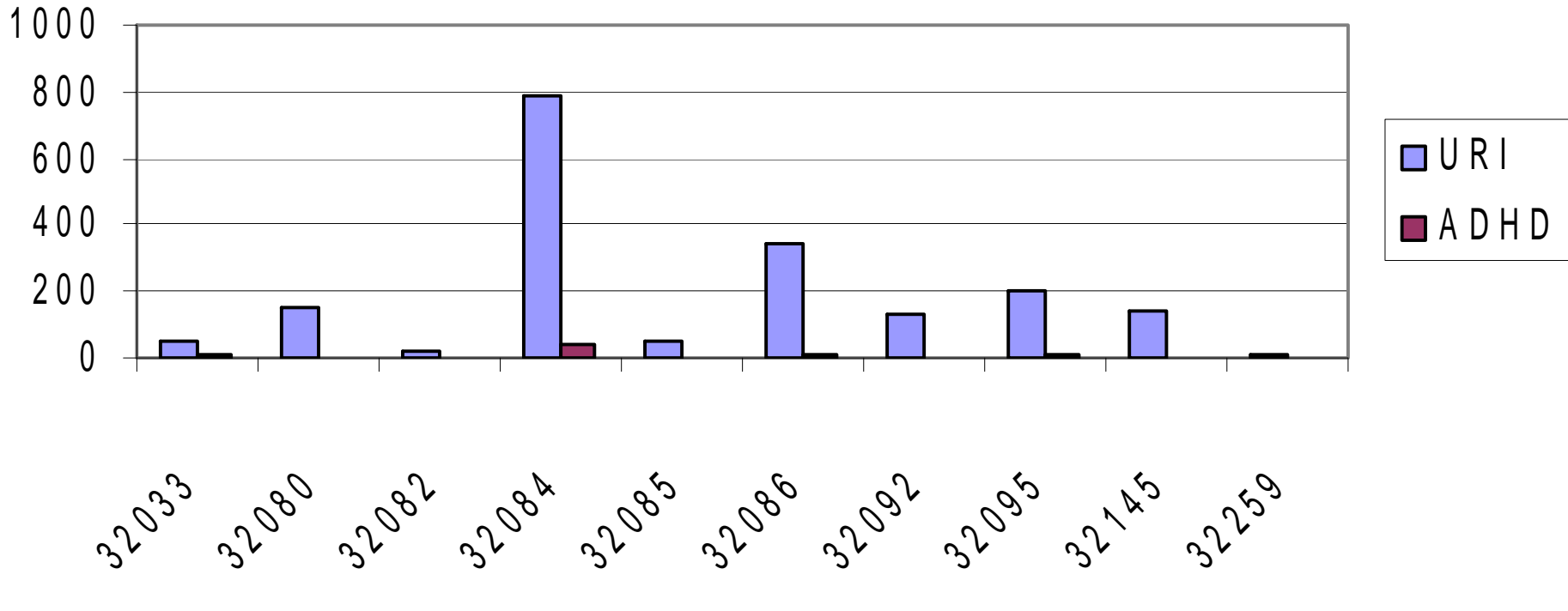


# Top Medical Conditions

- URI-Upper Respiratory Infections - Total: 3098
- ADHD-Attention Deficit Hyperactive Disorder - Total: 678

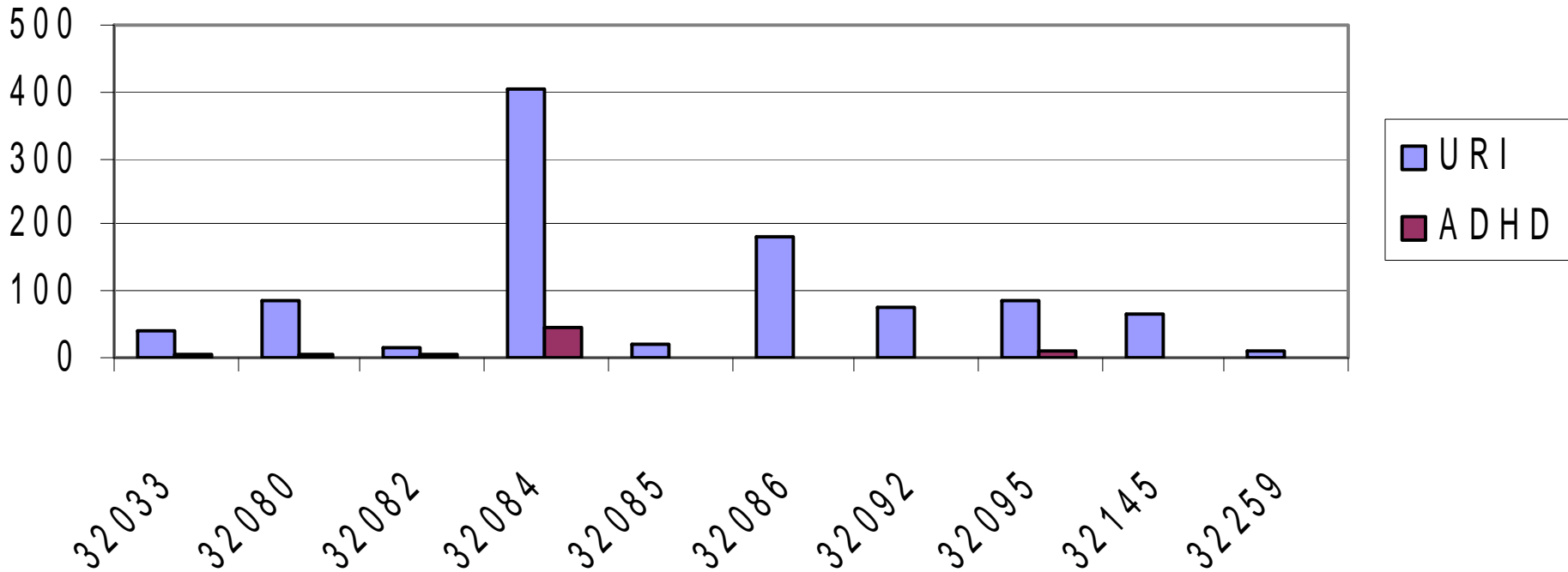
# SJC Health Department

5 Years and younger  
07/01/04 - 06/30/05



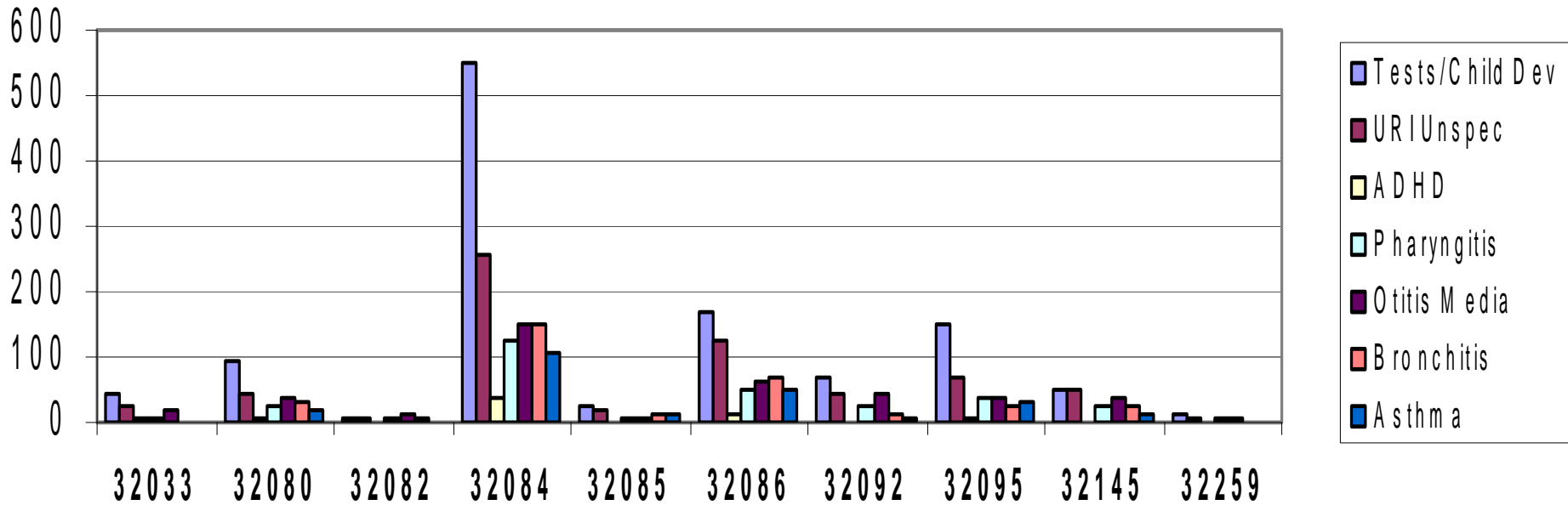
# SJC Health Department

5 years and younger  
07/01/05 - 06/30/06



# Health Dept's Top 7 Conditions/Services By Zip Code

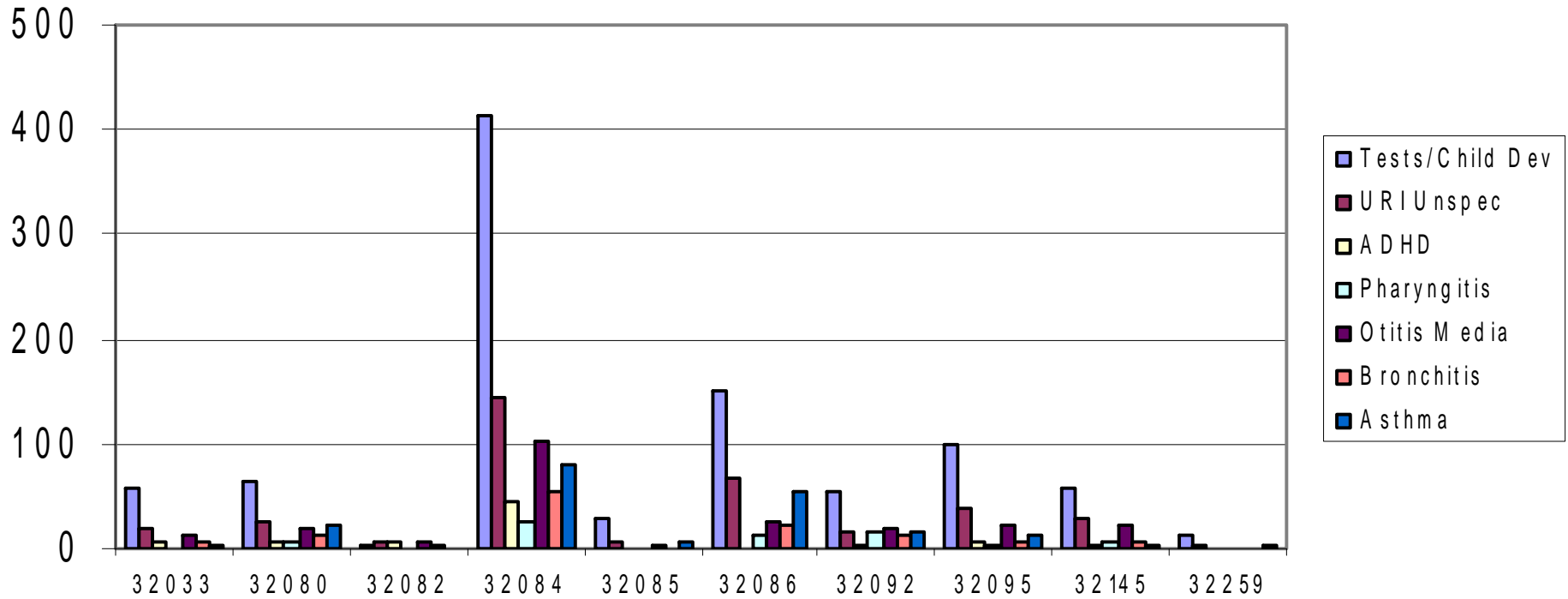
Health Dept: 5 Years and Under  
07/01/04 - 06/30/05



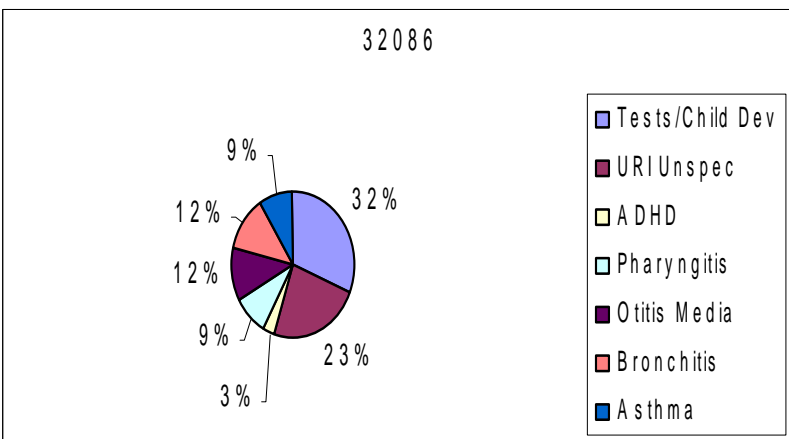
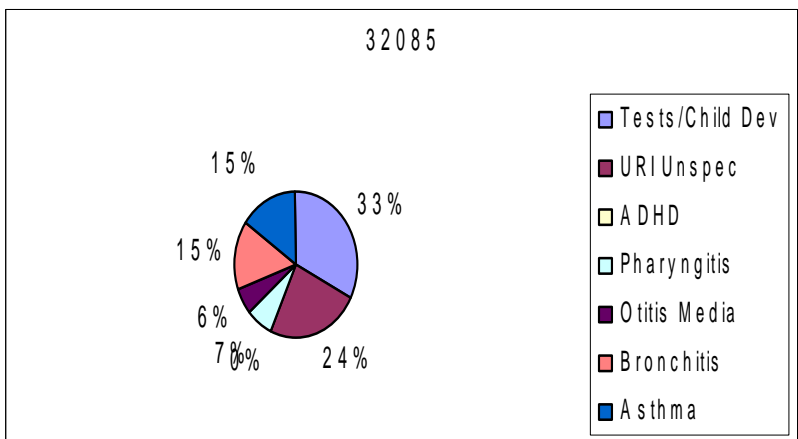
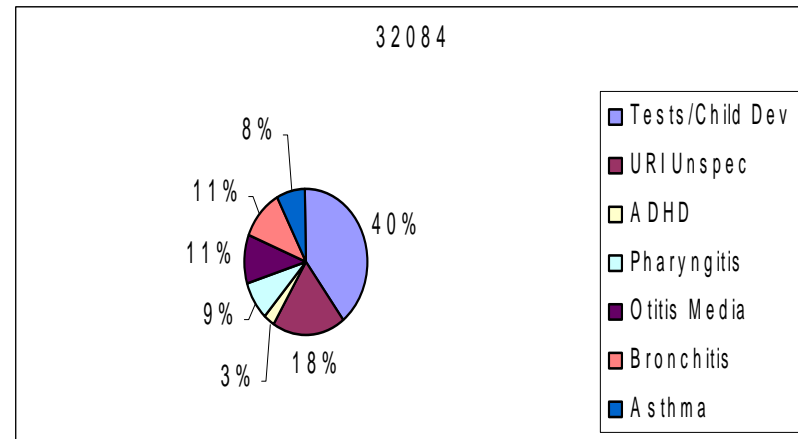
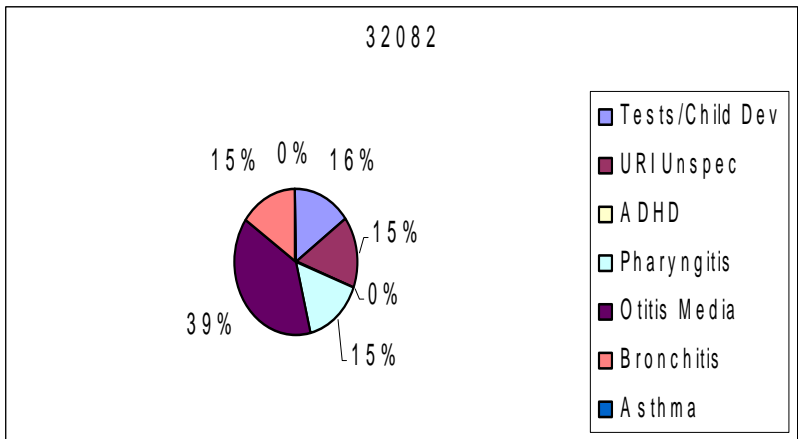
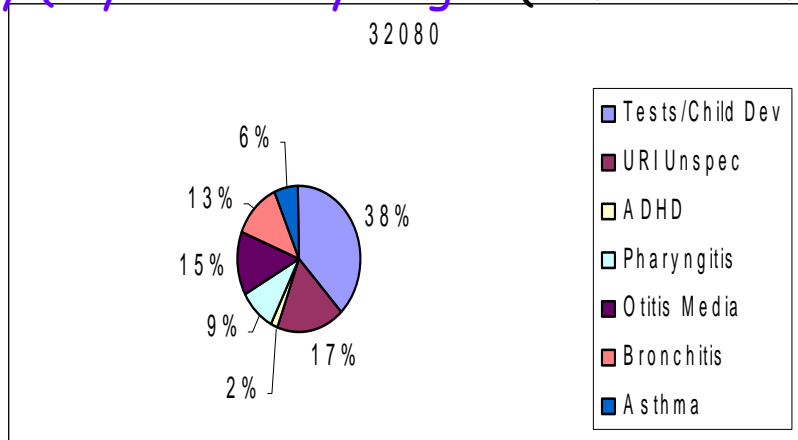
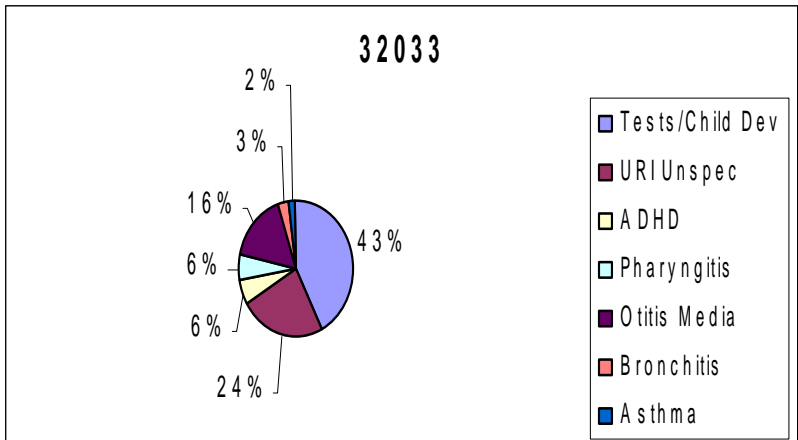


# Health Dept's Top 7 Conditions/Services By Zip Code

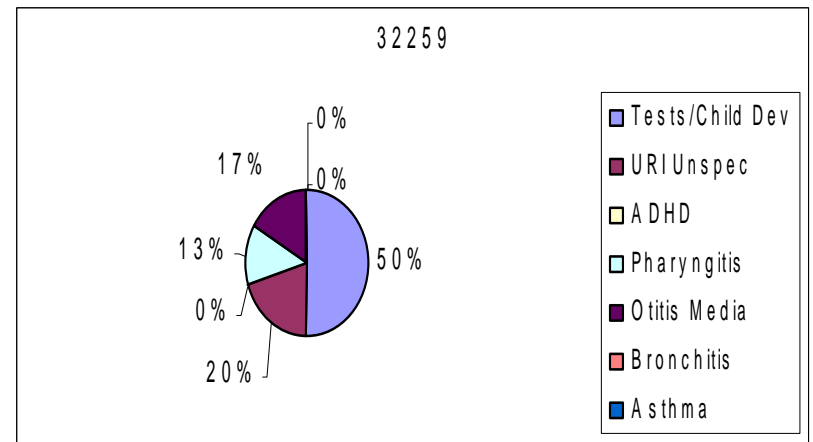
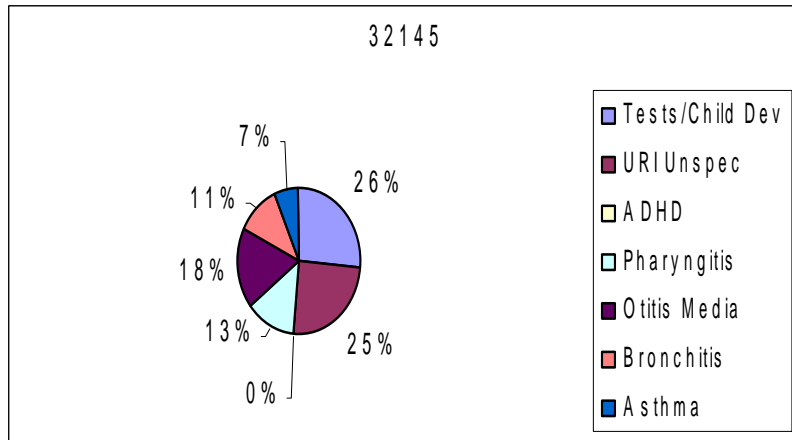
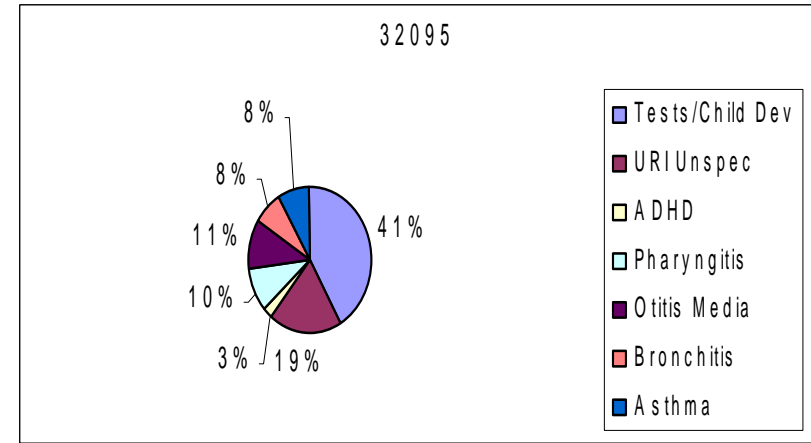
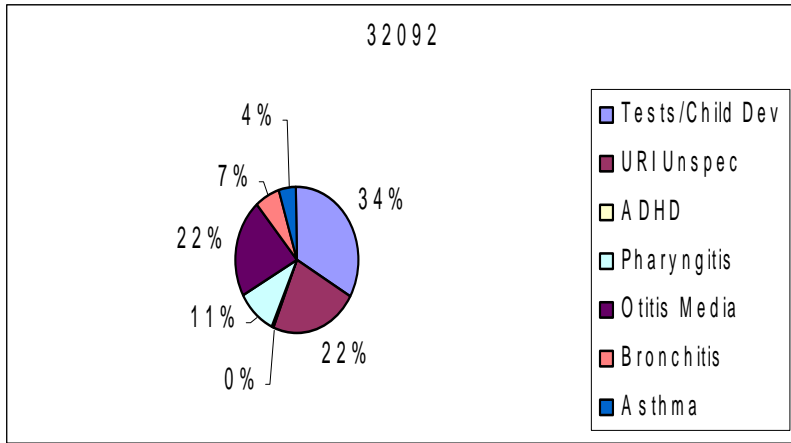
Health Dept - 5 years and younger  
05/01/05 - 04/30/06



# Health Dept's Top 7 Conditions/Services By (5 years and younger (07/04 - 06/05))

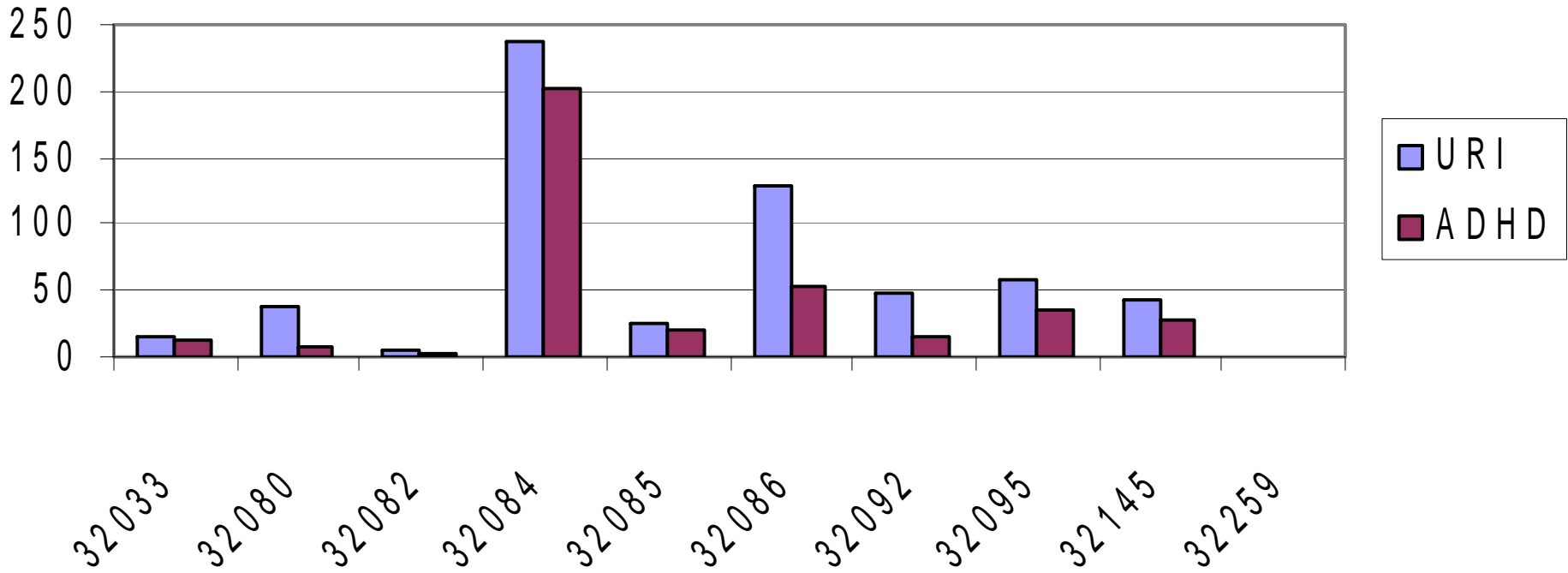


# Health Dept's Top 7 Conditions/Services By (5 years and younger (07/04 – 06/05)



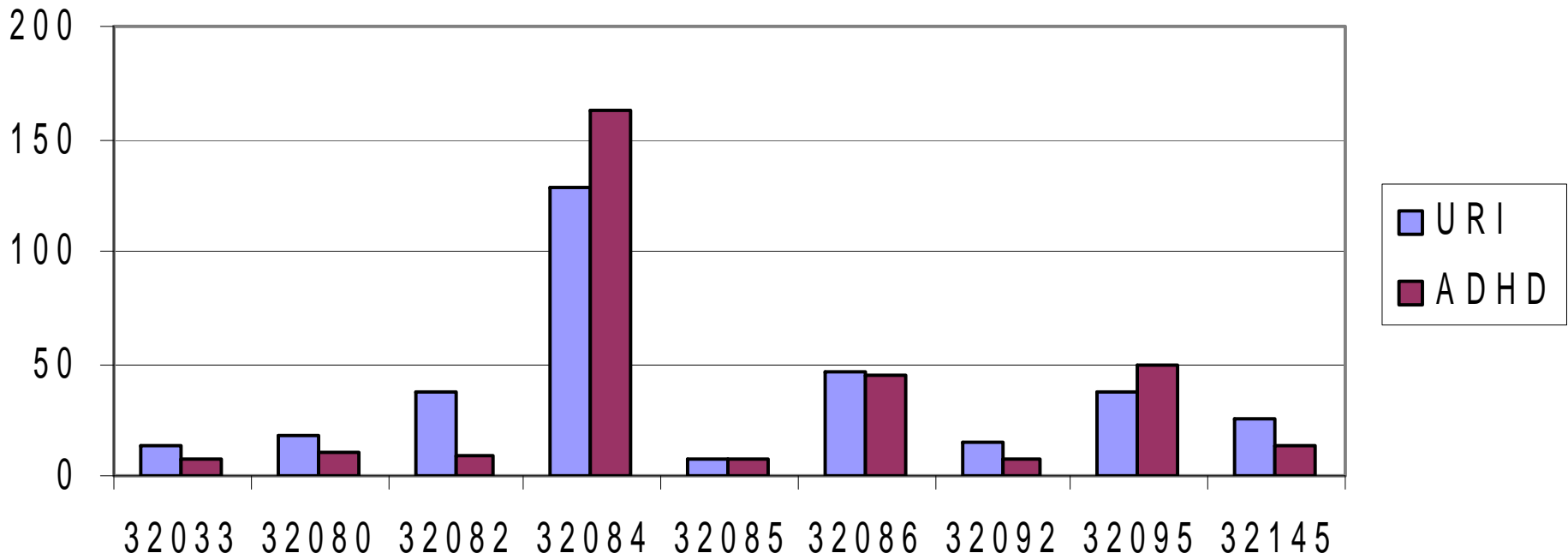
# SJC Health Department

6 to 11 years  
07/01/04 - 06/30/05



# SJC Health Department

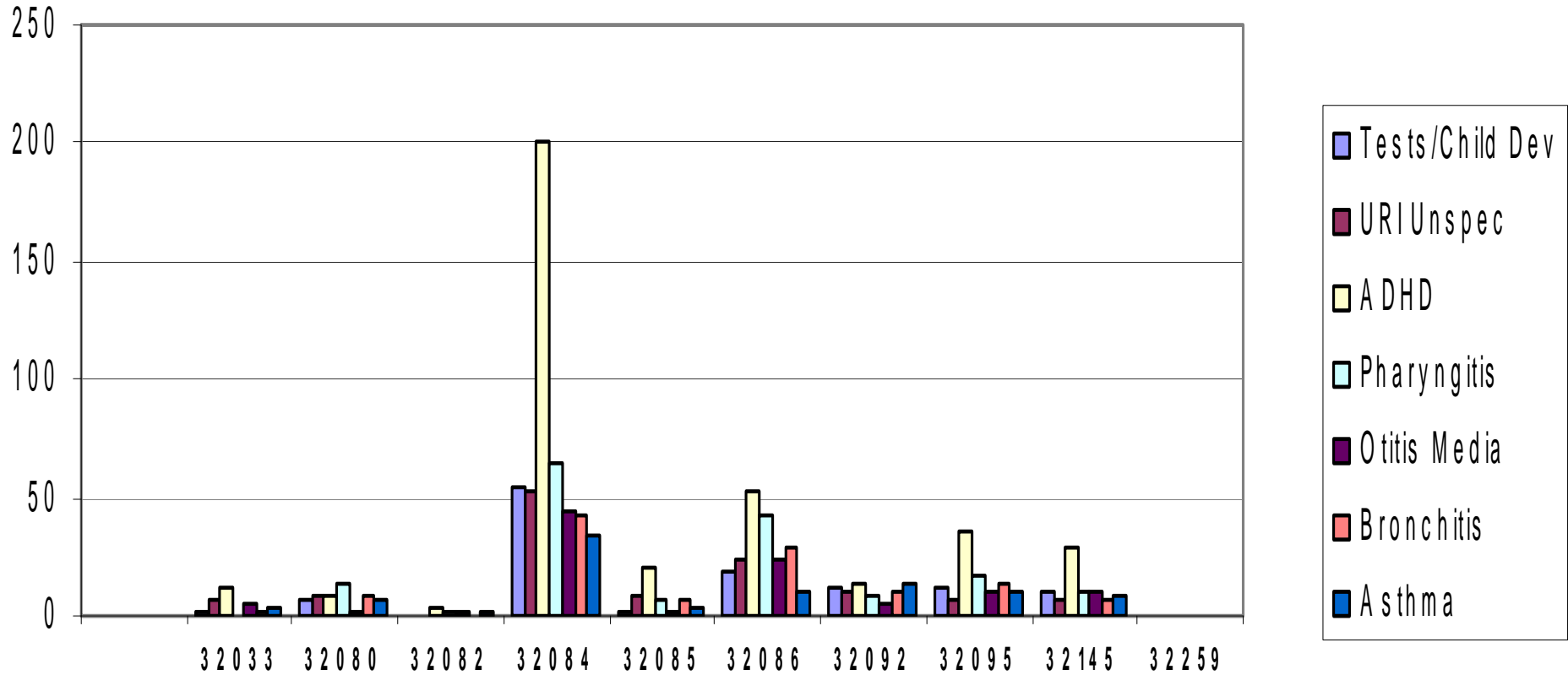
6 to 11 years  
07/01/05 - 06/30/06



# Top 7 Medical Conditions (6 years to 11 years)

Health Dept 6 to 11 years

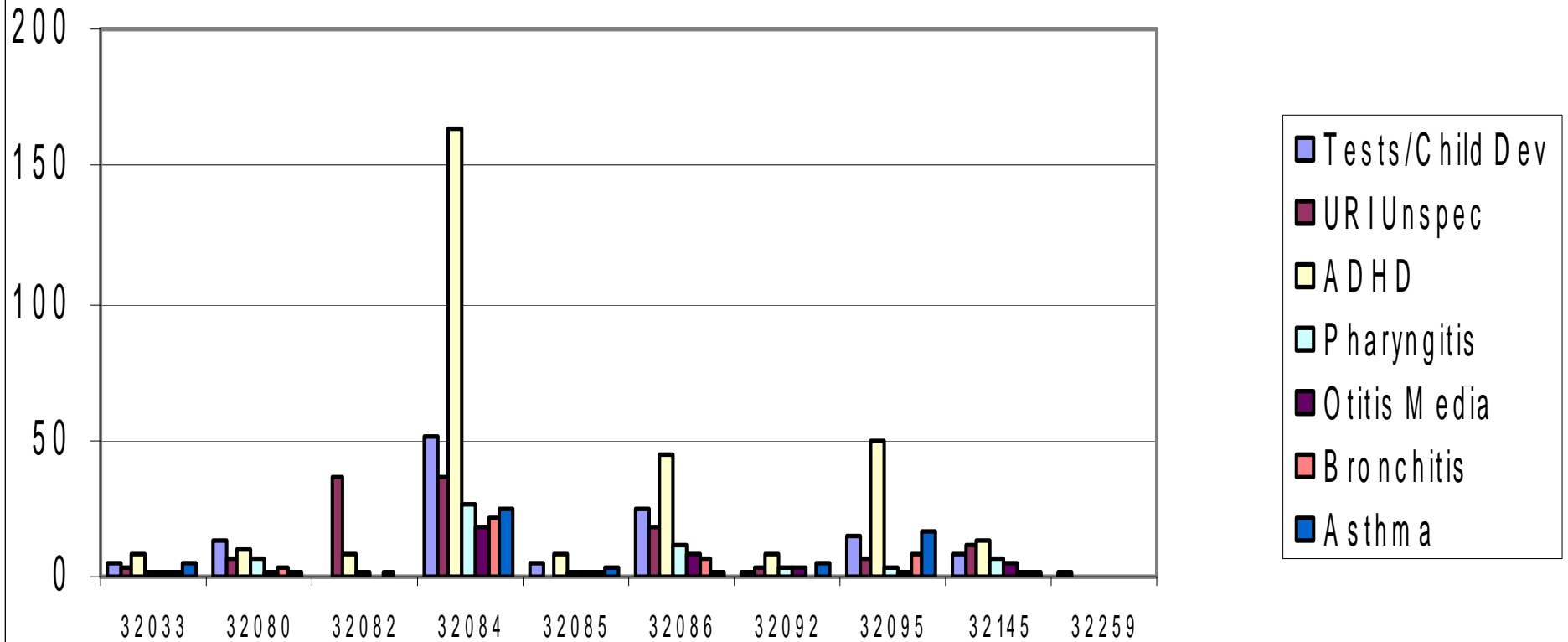
07/01/04 - 06/30/05



# Top 7 Medical Conditions (6 years to 11 years)

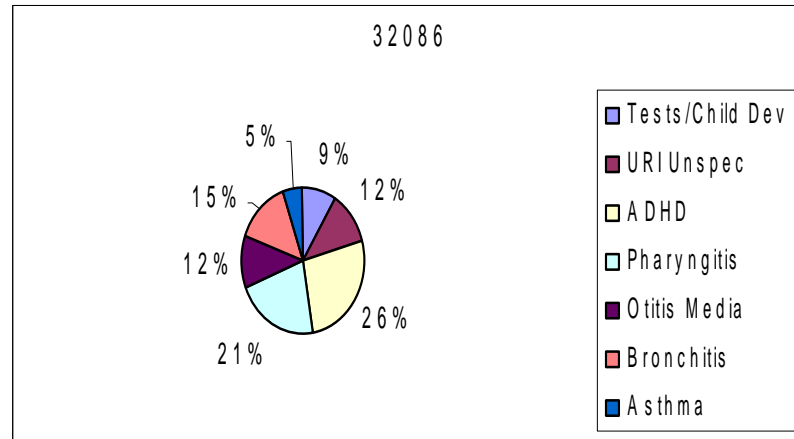
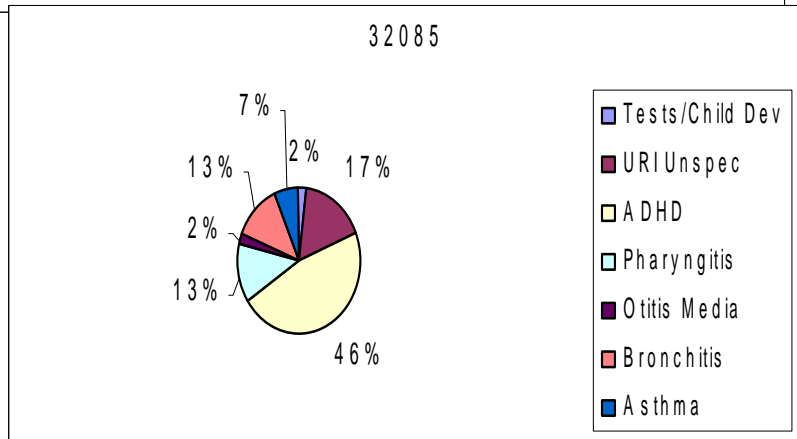
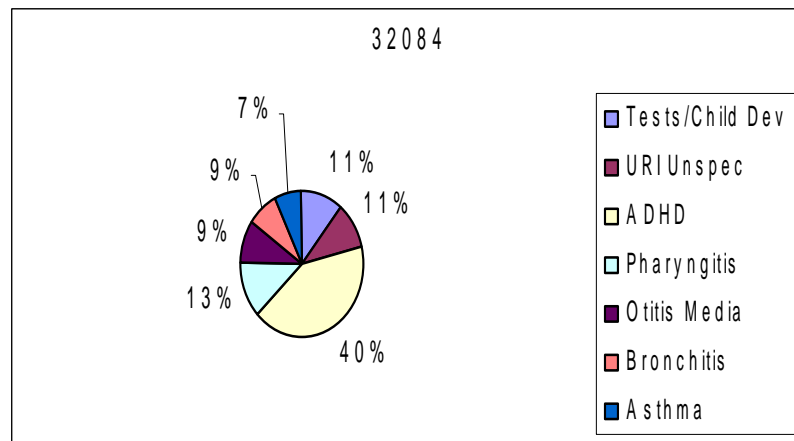
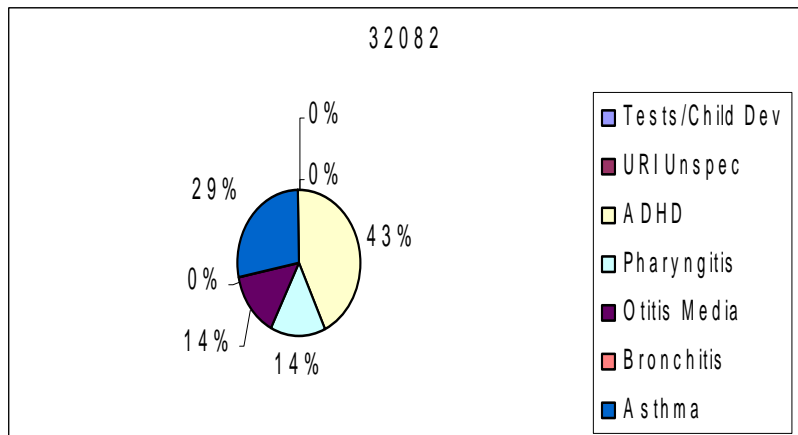
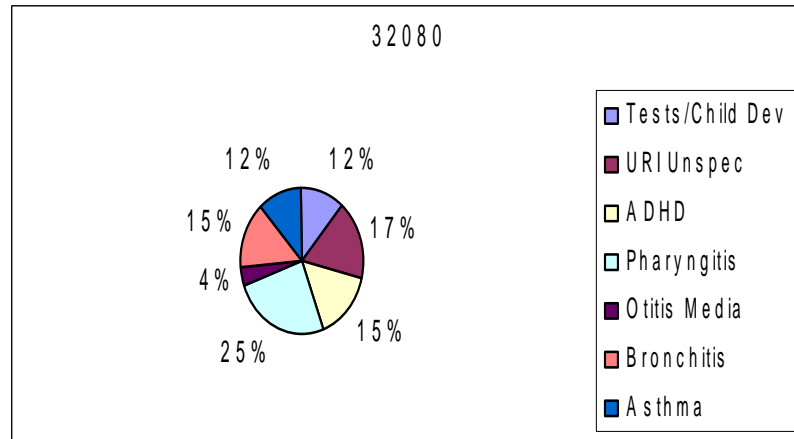
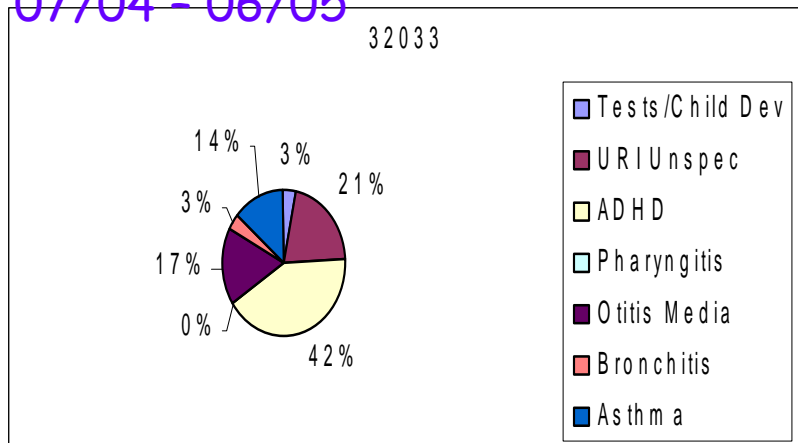
Health Dept: 6 to 11 years

05/01/05 - 04/30/06



# Top 7 Medical Conditions 6 to 11 years

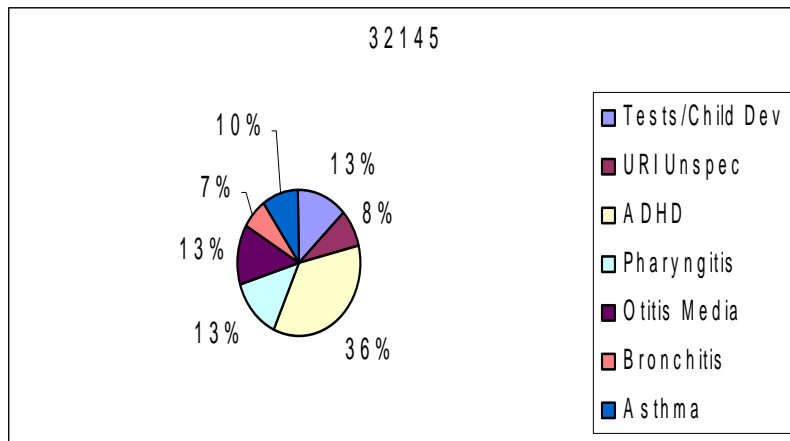
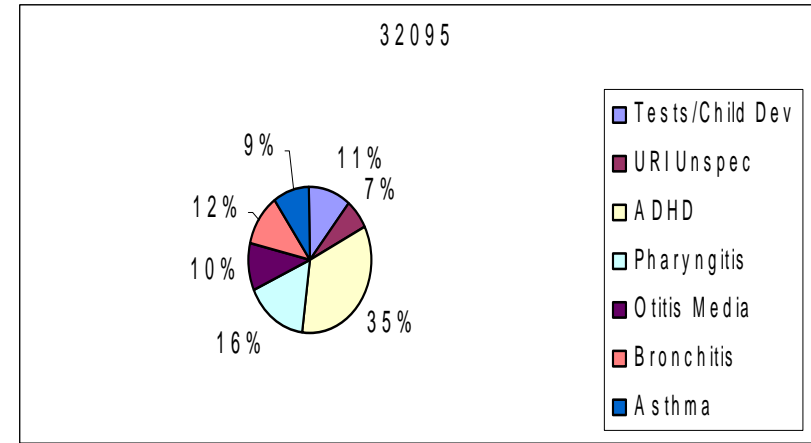
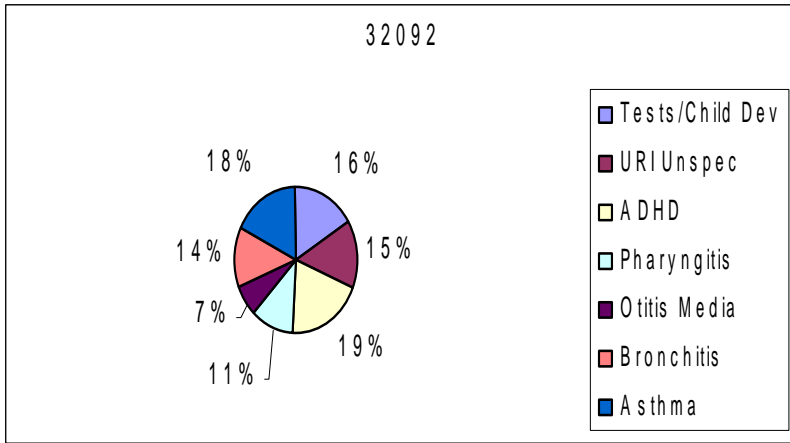
07/04 - 06/05





# Top 7 Medical Conditions 6 to 11 years

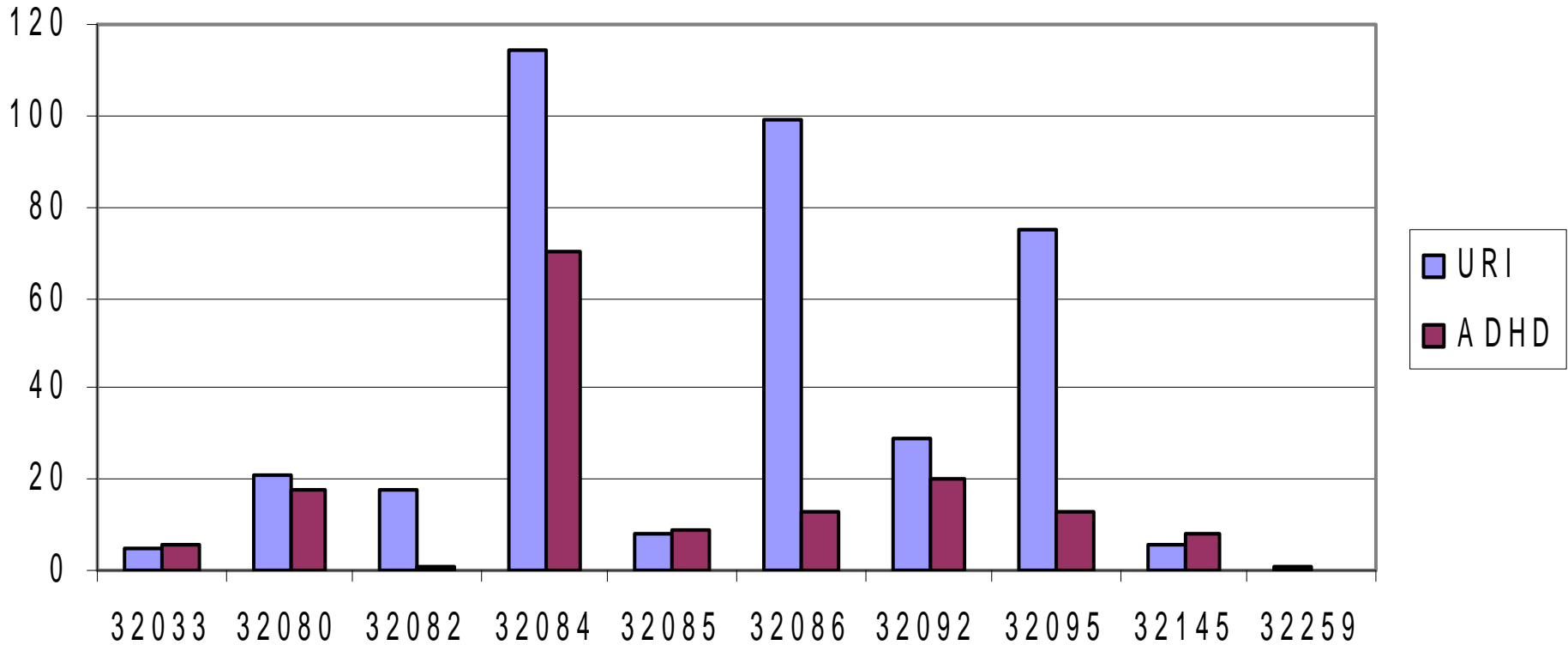
07/04 - 06/05



32259 – No medical conditions for 6 – 11 year olds at the Health Dept in this zip code

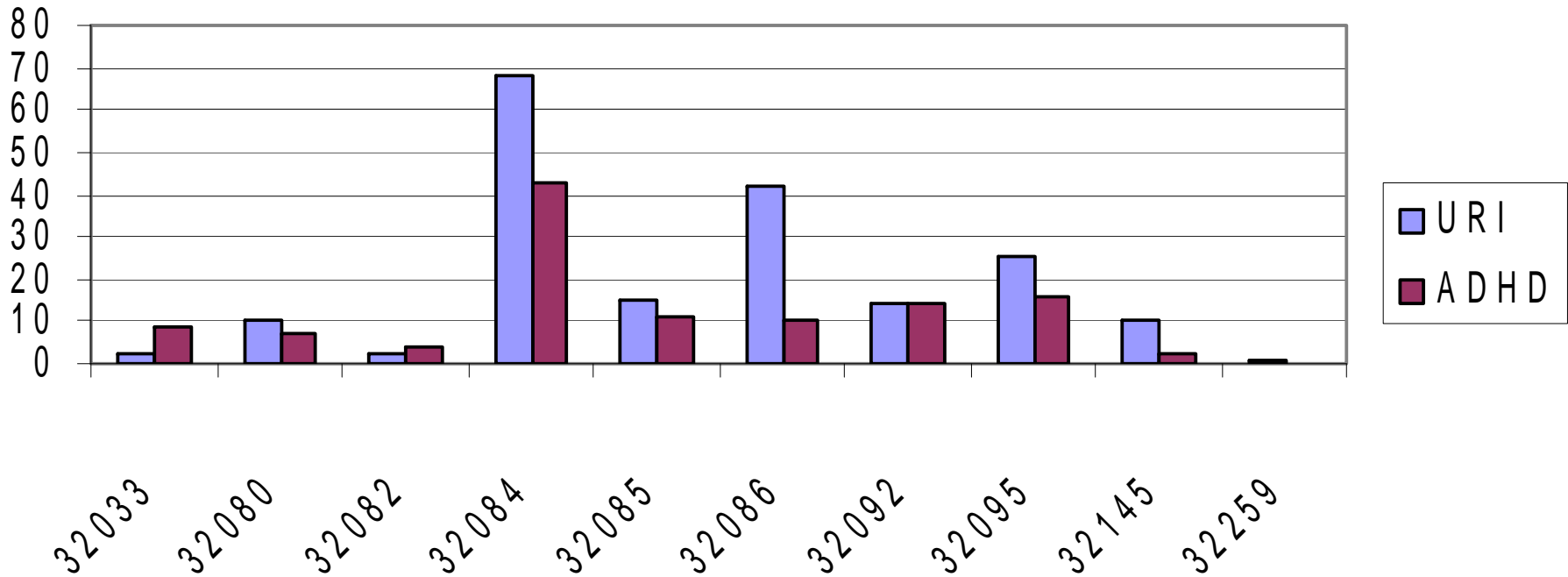
# St Johns County Health Department

12 to 18 years  
07/01/04 - 06/30/05



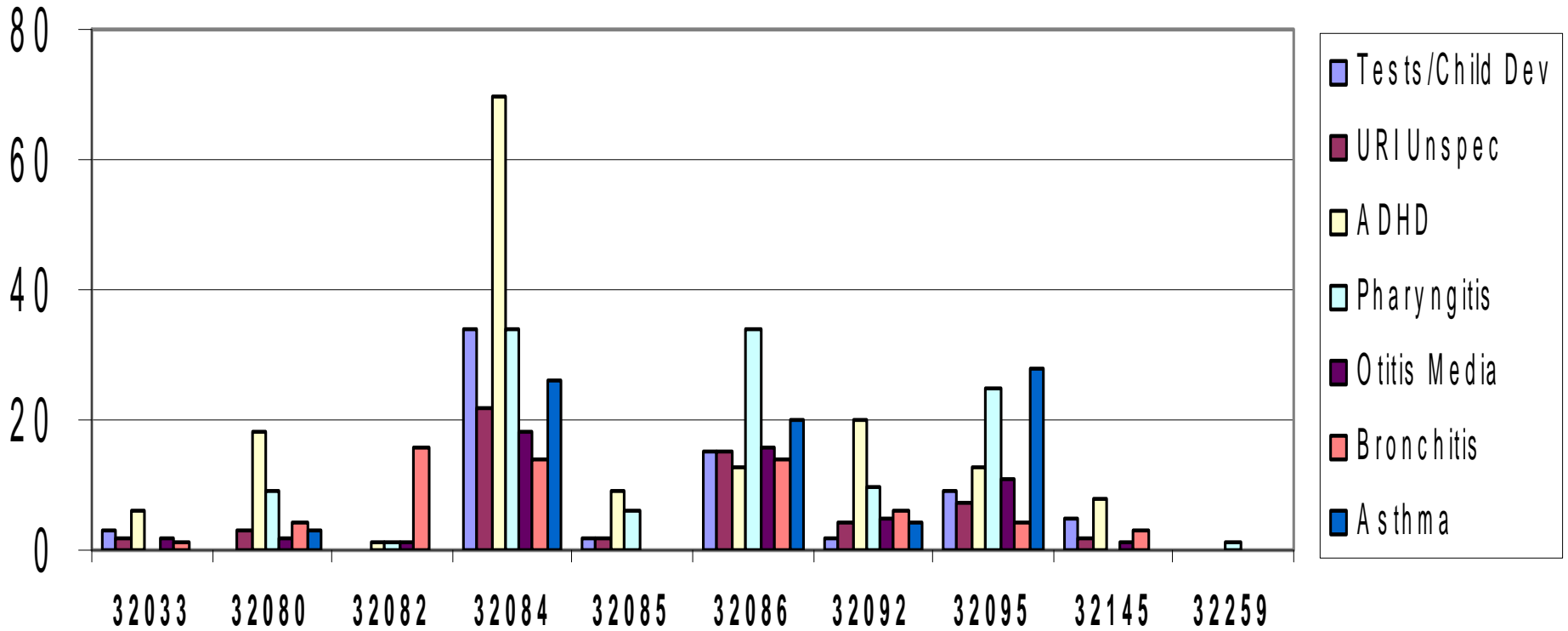
# St Johns County Health Department

12 to 18 years  
07/01/05 - 06/30/06



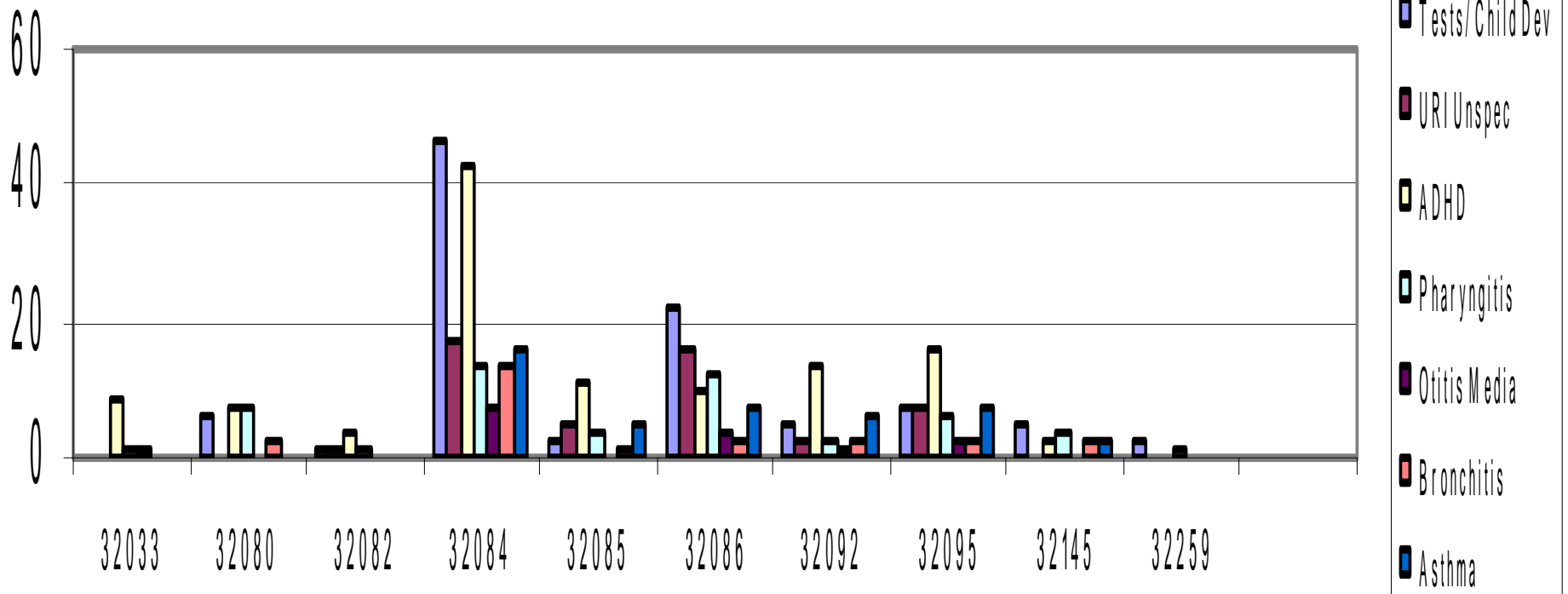
# Health Dept 12 to 18 years

07/01/04 - 06/30/05



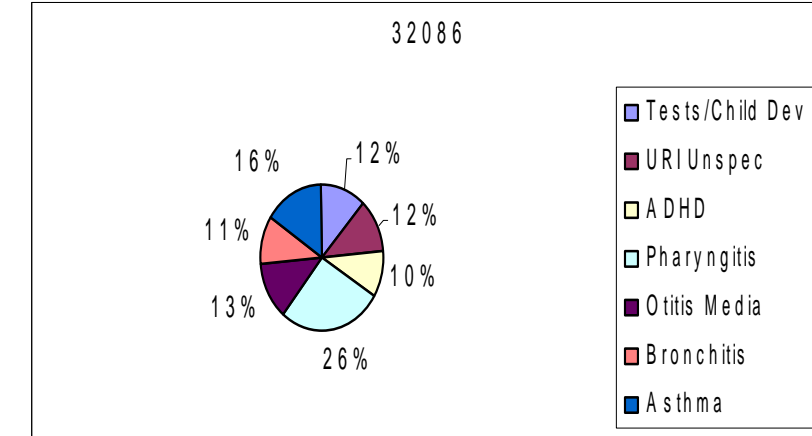
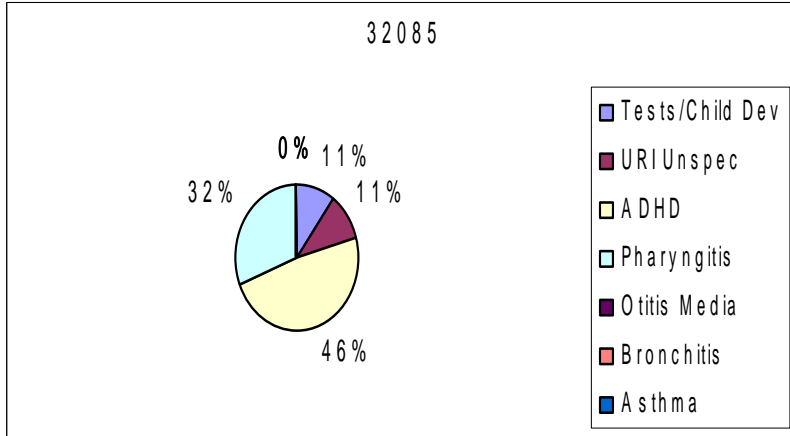
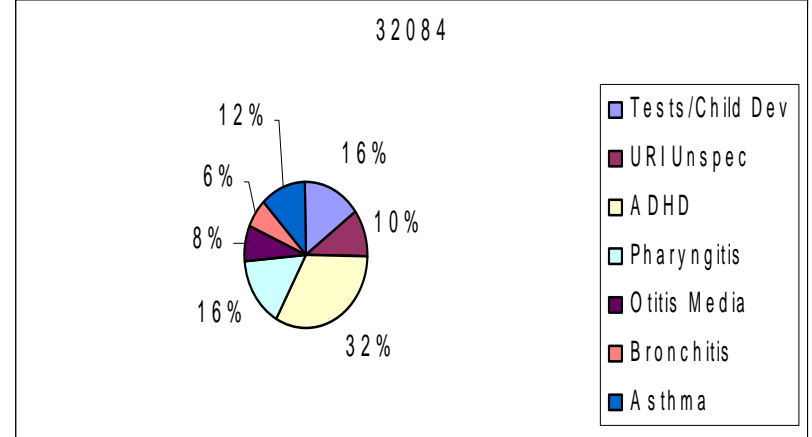
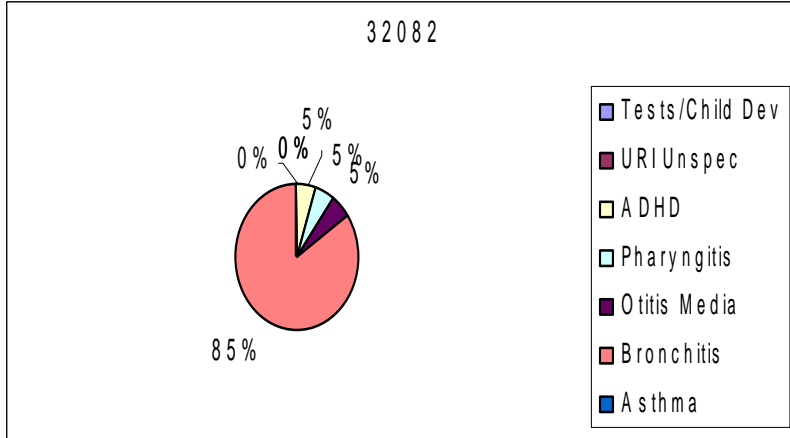
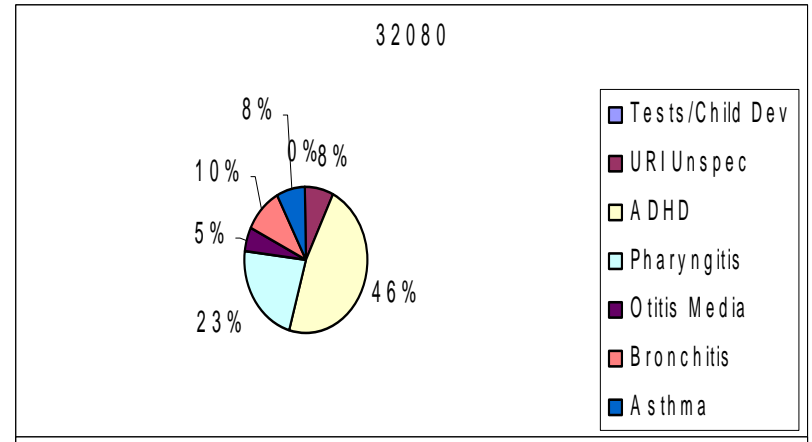
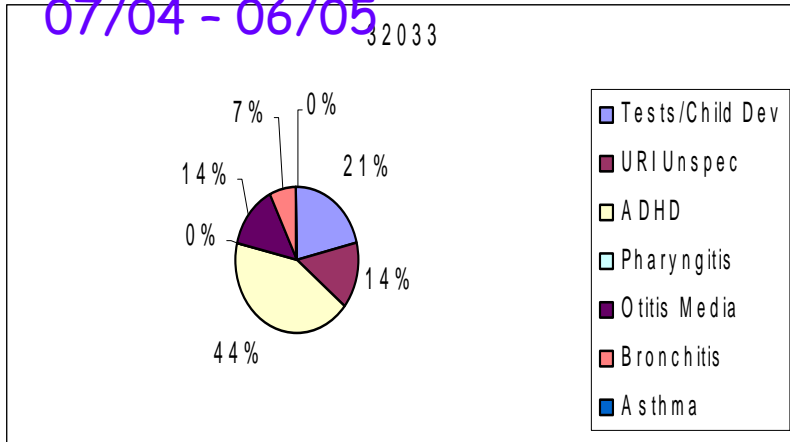
# Health Dept 12 to 18 years

05/01/05 - 04/30/06



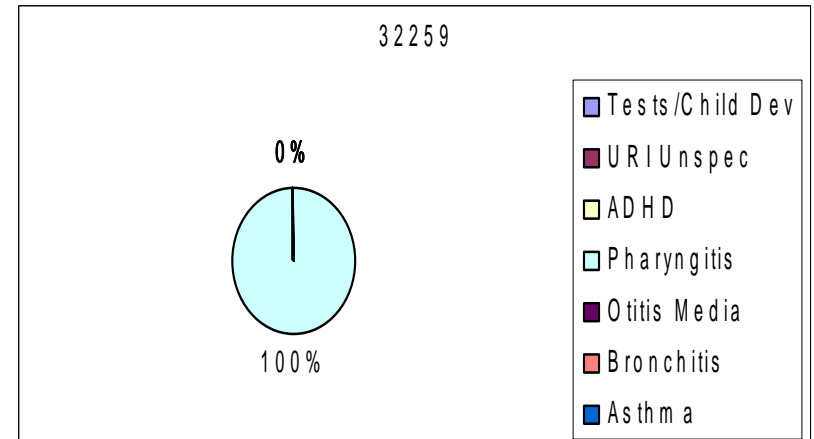
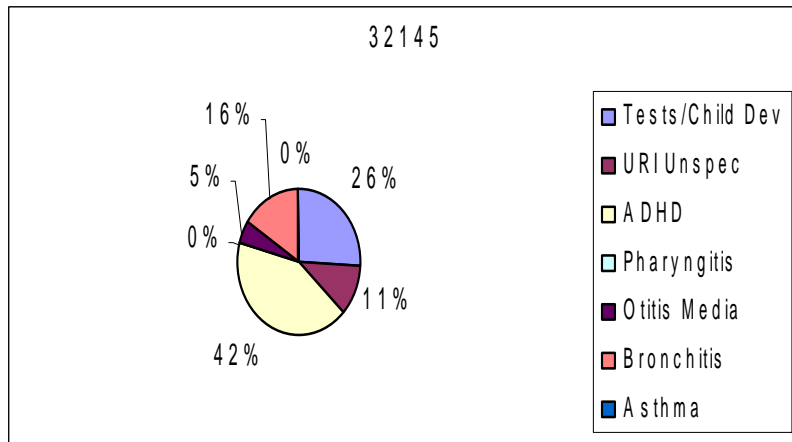
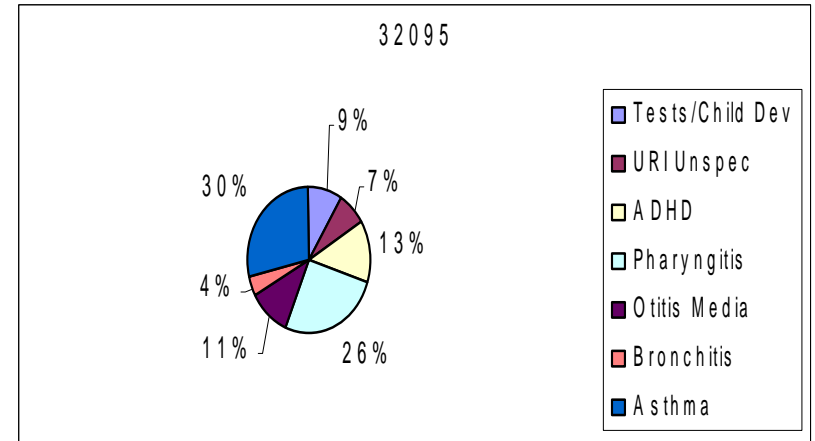
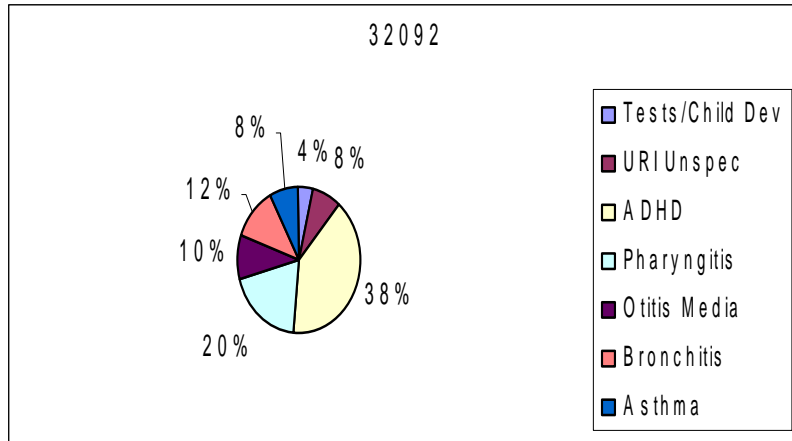
# Top 7 Medical Conditions 12 years to 18 years

07/04 - 06/05



# Top 7 Medical Conditions 12 to 18 years

## 07/04 - 06/05



# Summary

- Top Medical Conditions identified by the Health department are:
- Upper Respiratory Illness
- Attention Deficit-Hyperactive Disorder