

Environmental Scan Top Health/Diagnostic Issues

St Johns County Fire Rescue
Department

11/04 - 11/05

11/05 - 11/06

ST. JOHNS COUNTY SCHOOLS 2006 - 2007 SCHOOL YEAR

St. Johns County School District
 Dr. Joseph Joyner, Superintendent
 40 Orange Street
 St. Augustine, FL 32084
 Ph. (904) 819-7500
 www.stjohns.k12.fl.us



0 2 4 Miles

Zip Codes
32033
32080
32081
32082
32084
32086
32092
32095
32145
32224
32259

- 1 - Alice B. Landrum Middle School
- 2 - Allen D. Nease High School
- 3 - Bartram Trail High School
- 4 - Bethune-Cookman College (Spuds Campus)
- 5 - Cunningham Creek Elementary School
- 6 - Durbin Creek Elementary School
- 7 - Evelyn Hamblen Center Gaines Alternative Program
- 8 - First Coast Technical Institute St. Johns Technical High School
- 9 - Flagler College
- 10 - Florida School for the Deaf and Blind
- 11 - Fruit Cove Middle School
- 12 - Gamble Rogers Middle School
- 13 - Hastings Youth Academy
- 14 - Hickory Creek Elementary School
- 15 - John A. Crookshank Elementary School
- 16 - Julington Creek Elementary School
- 17 - Katerlinus Elementary School
- 18 - Marjorie K. Rawlings Elementary School
- 19 - Mill Creek Elementary School
- 20 - Murray Middle School
- 21 - Ocean Palms Elementary School
- 22 - Osceola Elementary School
- 23 - Otis A. Mason Elementary School
- 24 - Pedro Menendez High School
- 25 - Ponte Vedra-Palm Valley Elementary School
- 26 - R.B. Hunt Elementary School
- 27 - Sebastian Middle School
- 28 - South Woods Elementary School
- 29 - St. Augustine High School
- 30 - St. Johns Regional Juvenile Detention Center
- 31 - St. Johns River Community College
- 32 - Switzerland Point Middle School
- 33 - The Webster School
- 34 - Timberlin Creek Elementary School
- 35 - W.D. Hartley Elementary School
- 36 - University of St. Augustine

Map Printed: 10/03/2005
 Project ID: 11351



St Johns County Fire Rescue

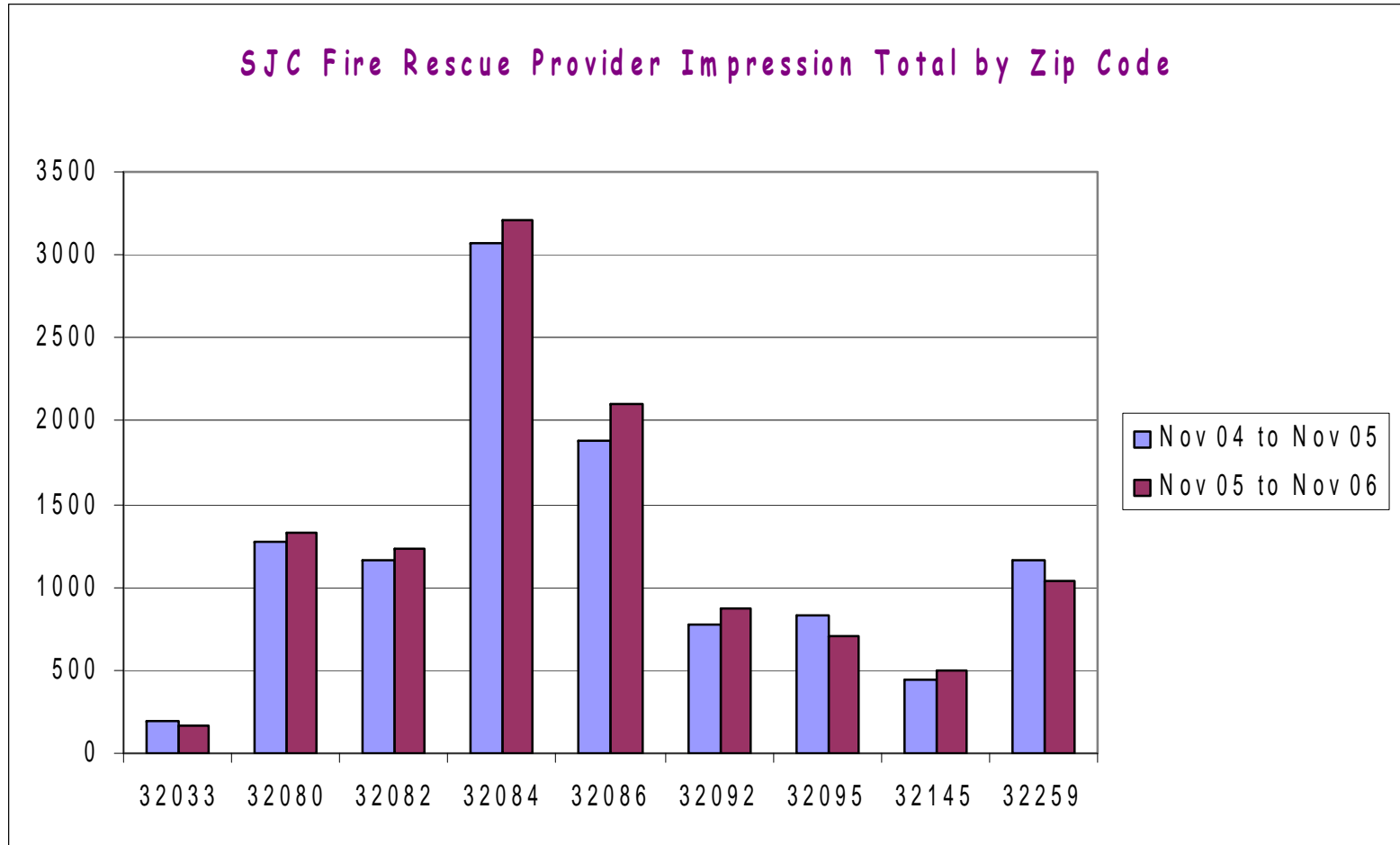
- The call data provided in this scan are the Top 10 “provider impressions” reported by zip code. Due to new software, call data supplied covers November 2, 2004 through November 1, 2005 and November 2, 2005 through November 1, 2006
- This data is not all inclusive, in that it does not count all call data and responses such as Trauma reports.
- The totals documented in this report are the totals of provider impression call data of the top 10 calls
- Graph totals presented by Zip Codes do not equal total of all call data
- Total Population Data Set: Census 2000 Summary File (SF 3)
- **Total Service Events for:**
- November 2, 2004 through November 1, 2005 Equals 10806
- November 2, 2005 through November 1, 2006 Equals 11143

Zip Codes/Population

Zip Codes:

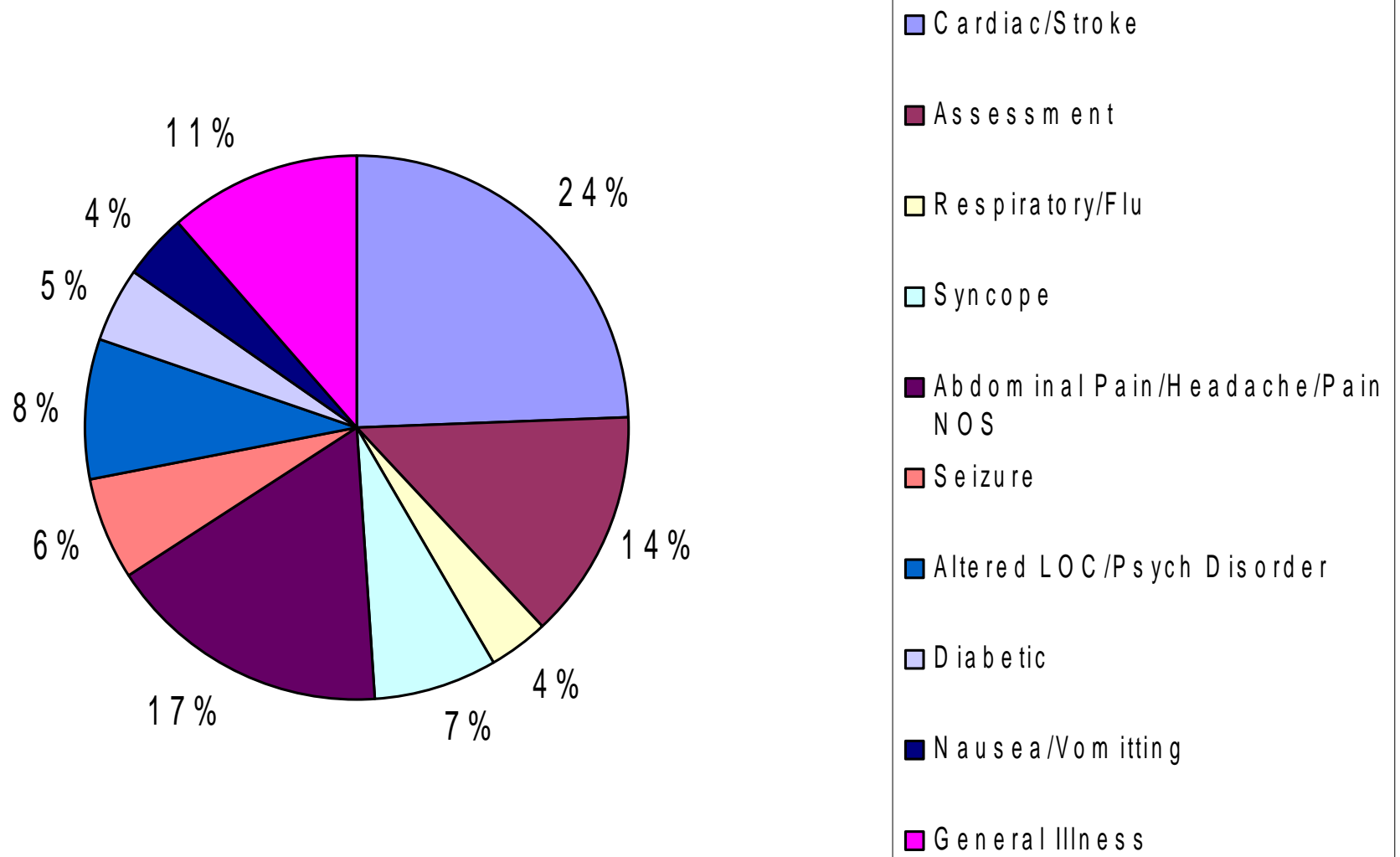
32033	West of 95, South of 214 And North of 206 Pop: 2,133	32092	West of 95, South of 210 and North of 214 Pop: 6,595
32080	St Augustine Beaches Pop: Included in 32084	32095	North of St Augustine, East of 95 And South of 210/Palm Valley Road Pop: 21,071
32082	Ponte Vedra Area Pop: 27,821	32145	Hastings and Flagler Estates Pop: 3,940
32084	St Augustine/Downtown west to 95 Pop: 20,584	32259	Fruit Cove, Julington Creek North of 210 Pop: 18,087
32086	St Augustine: South of 312 Pop: 22,948		
32085	St Augustine Post Office Box		

St Johns County Fire and Rescue

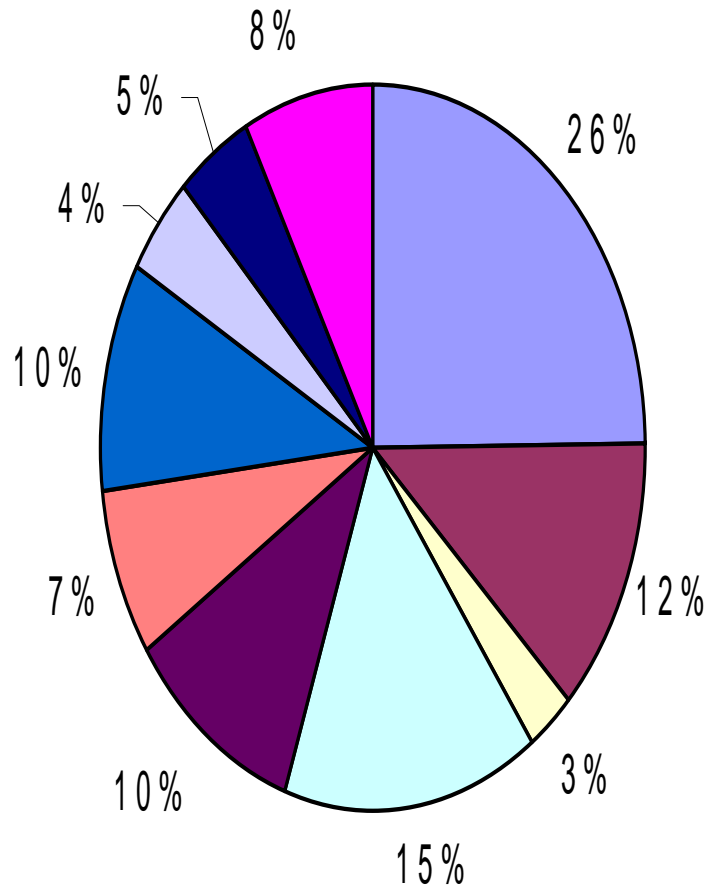


Total Service Events for:
November 2, 2004 through November 1,
2005 Equals 10806
November 2, 2005 through November 1,
2006 Equals 11143

St Johns County Fire and Rescue (Nov 04-Nov 05)

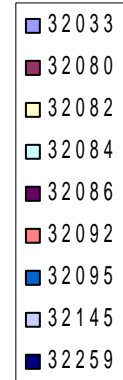
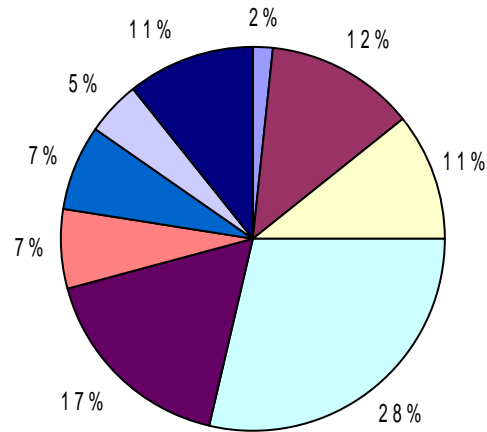


St Johns County Fire and Rescue (11/05-11/06)

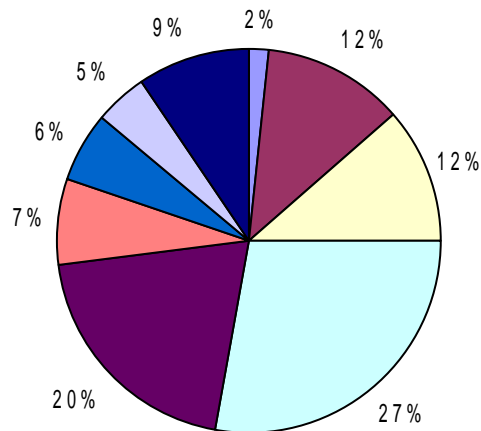


- Cardiac/Stroke
- Assessment
- Respiratory/Flu
- Syncope
- Abdominal Pain/Headache/Pain NOS
- Seizure
- Altered LOC/Psych Disorder
- Diabetic
- Nausea/Vomitting
- General Illness

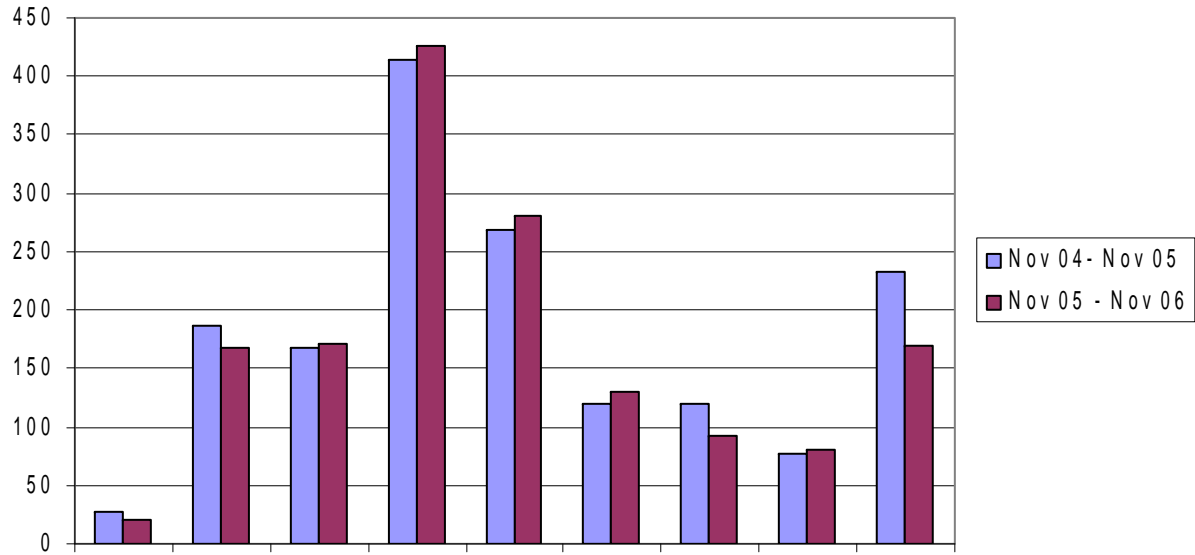
**St. Johns County Fire Rescue
Top 10 by Zip Code (Nov 04- Nov 05)**



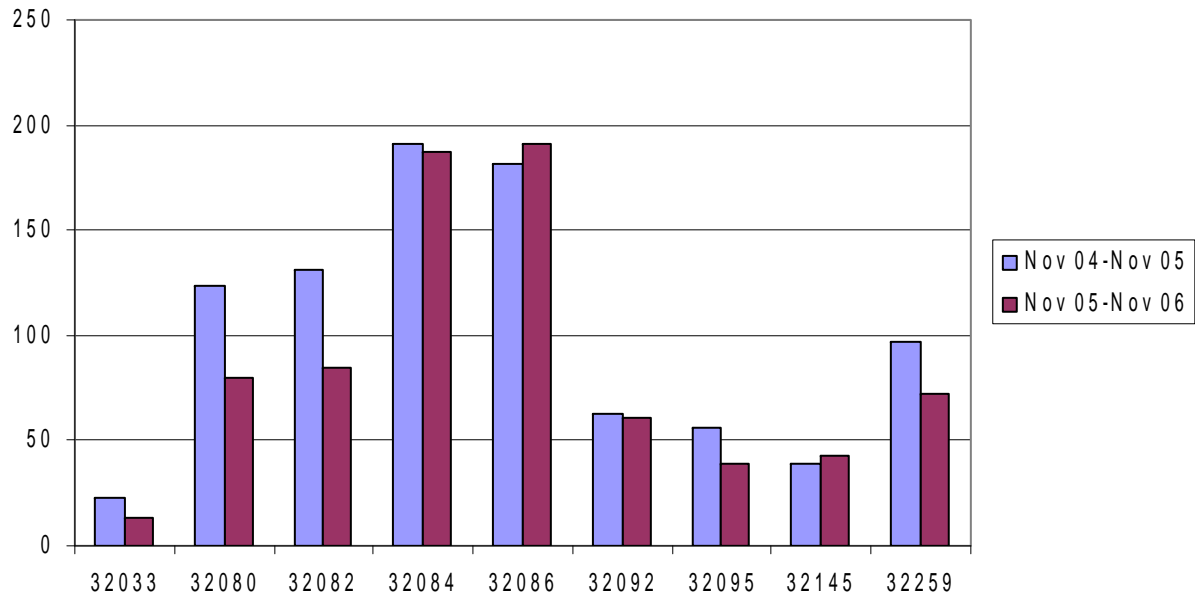
**St. Johns County Fire Rescue
Top 10 Reports by Zip Code (Nov 05 - Nov 06)**



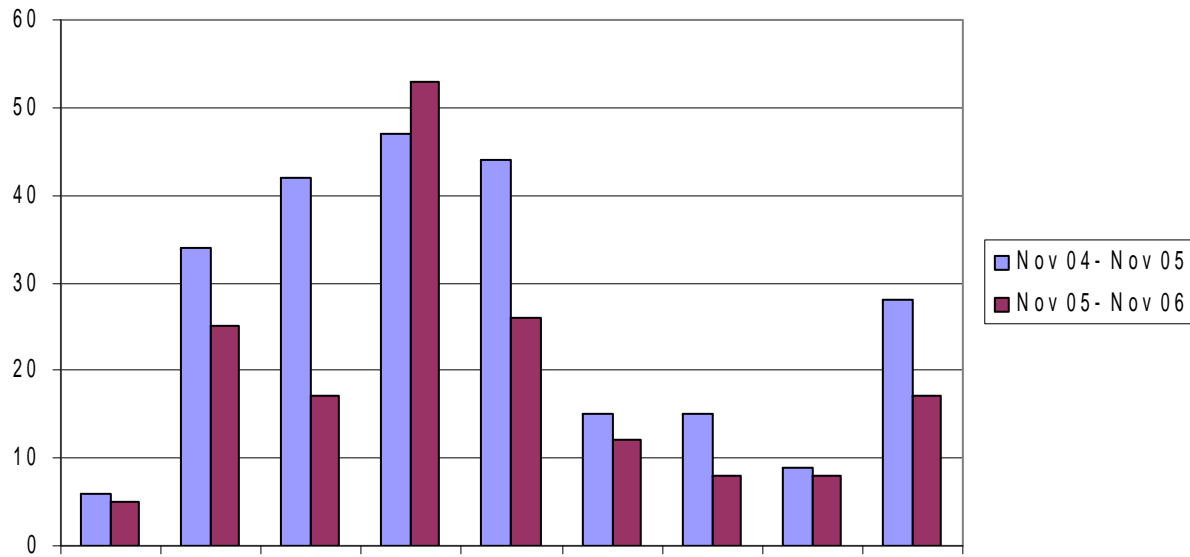
Cardiac/Stroke



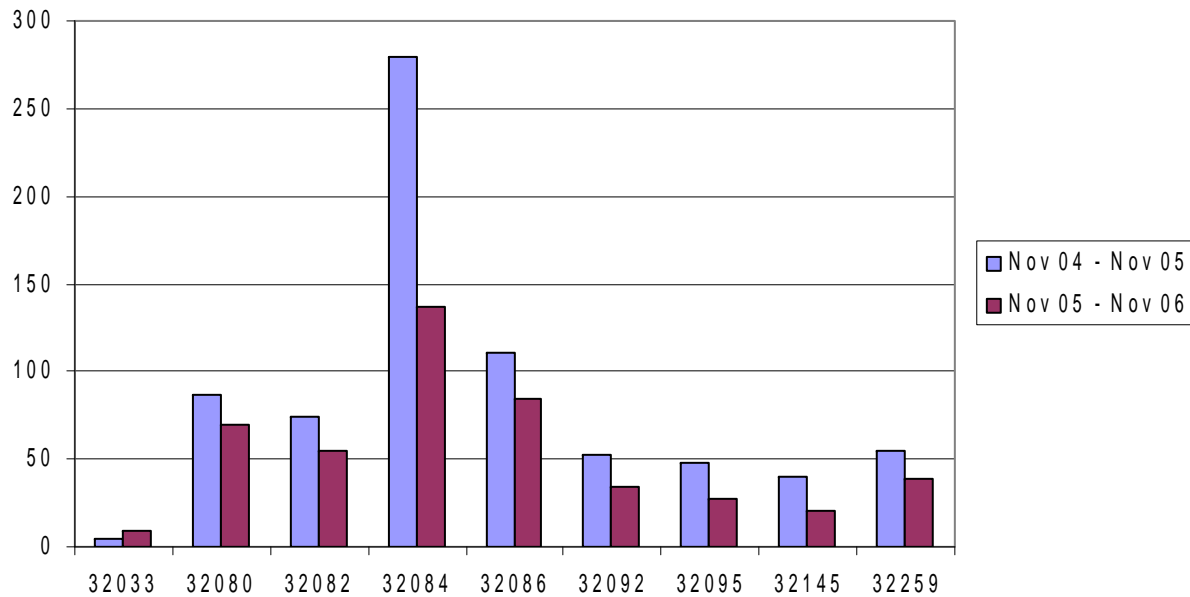
Assessment



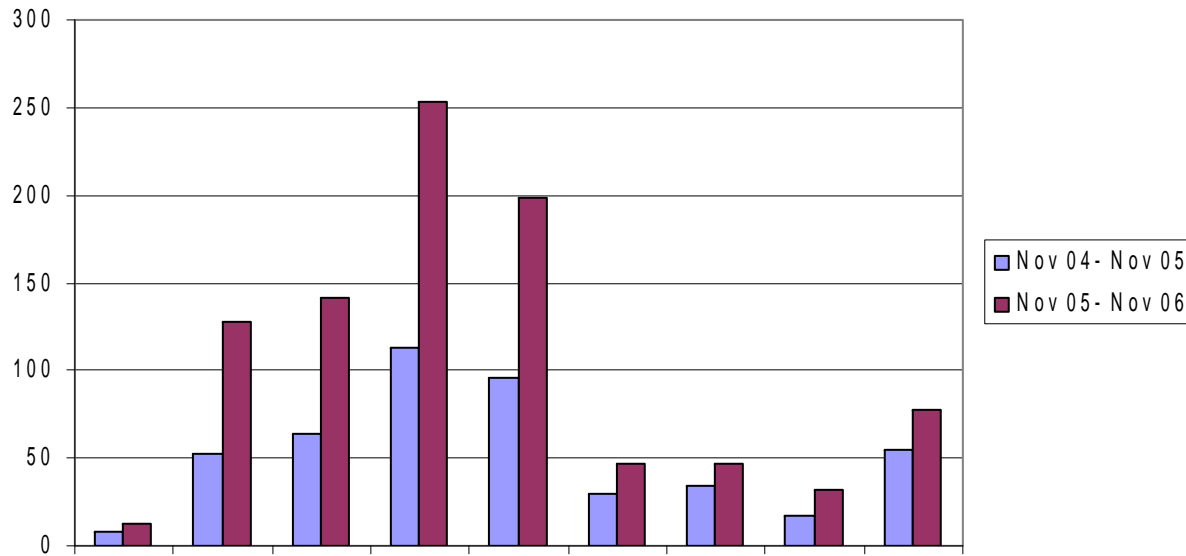
Respiratory/Flu



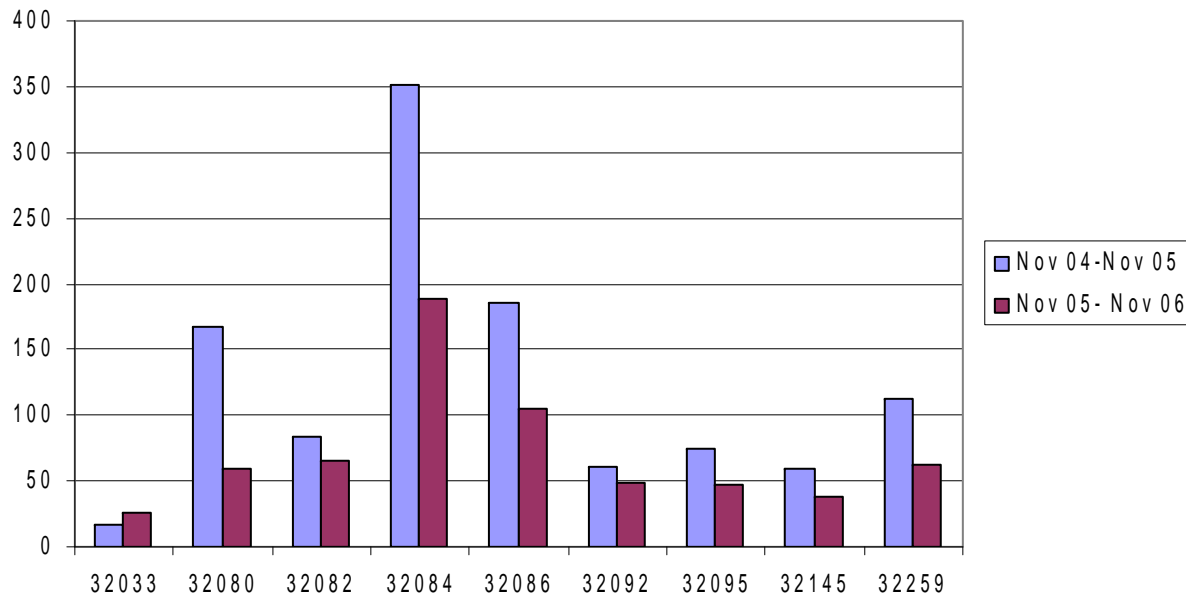
General Illness



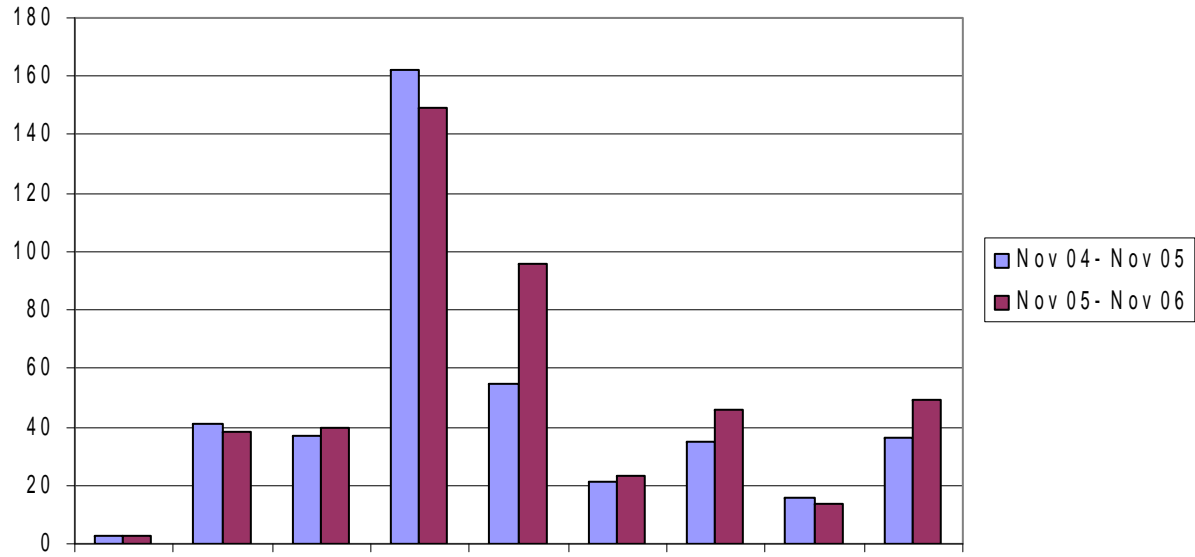
Syncope



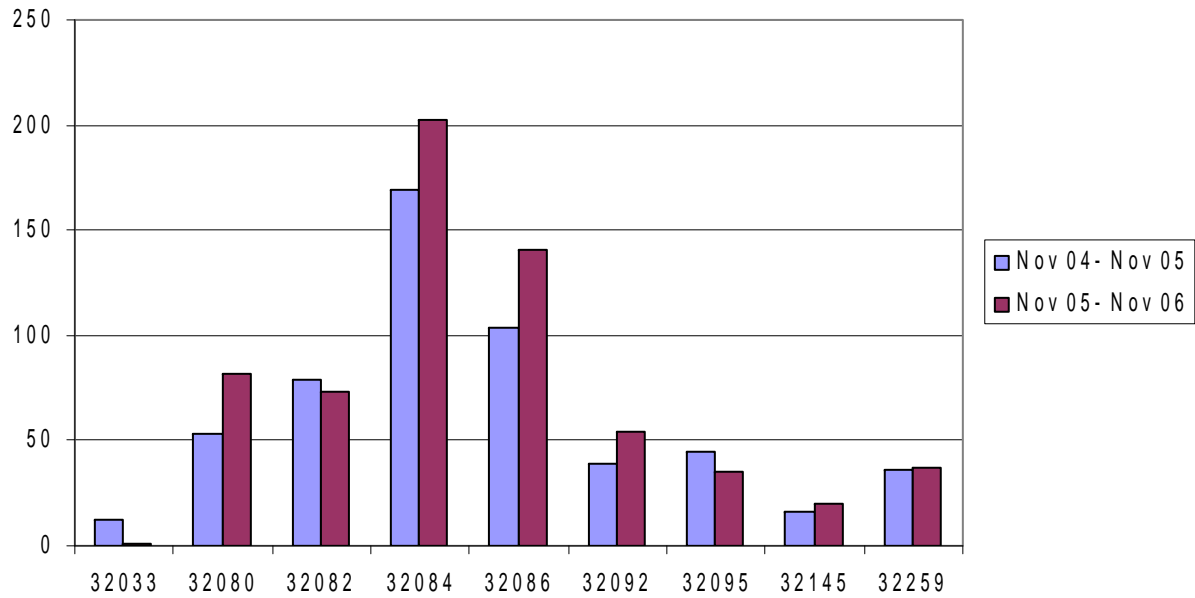
Abdominal Pain/Headache/Pain NOS



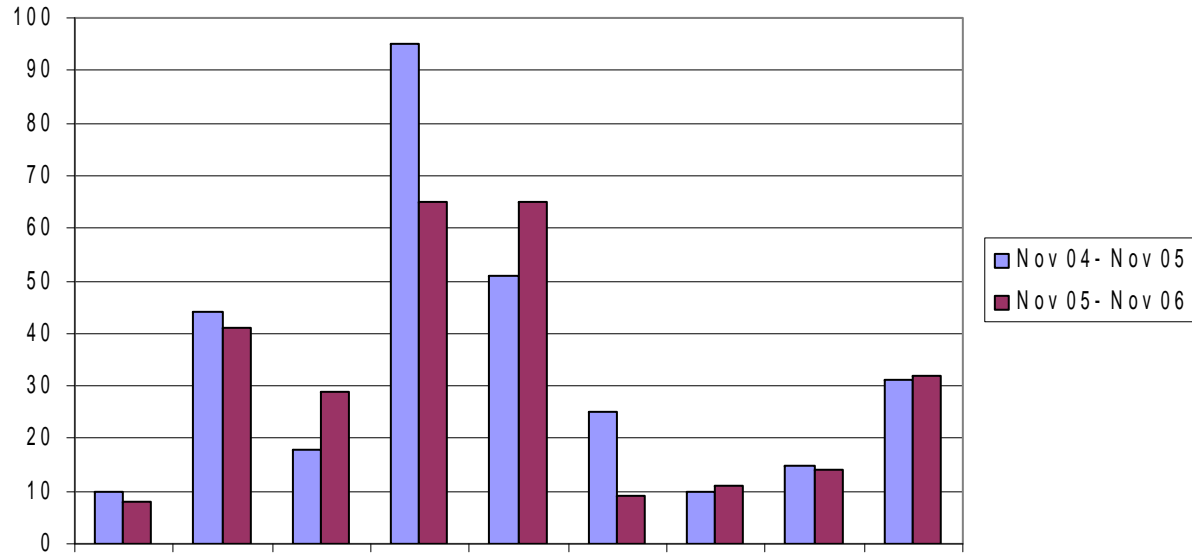
Seizure



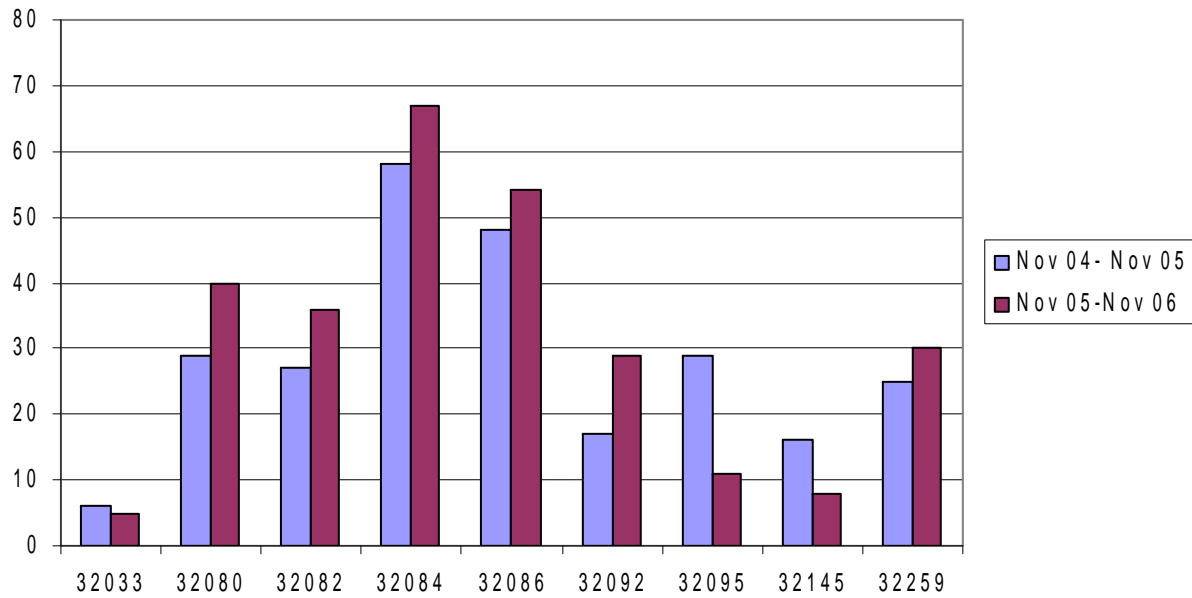
Altered LOC/Psych Disorder



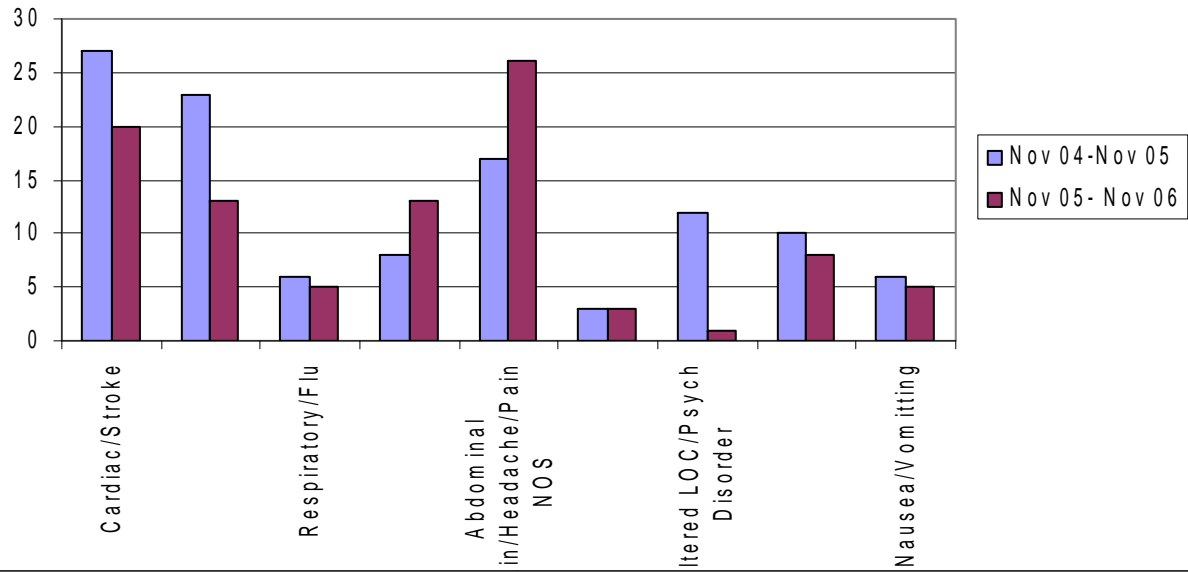
Diabetic



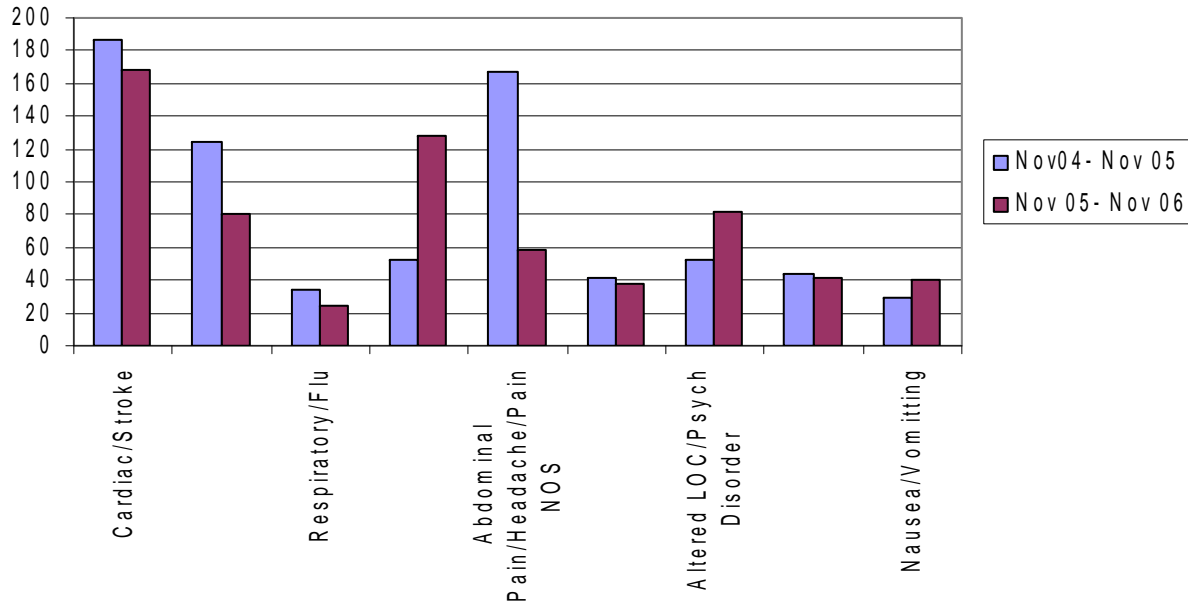
Nausea/Vomitting



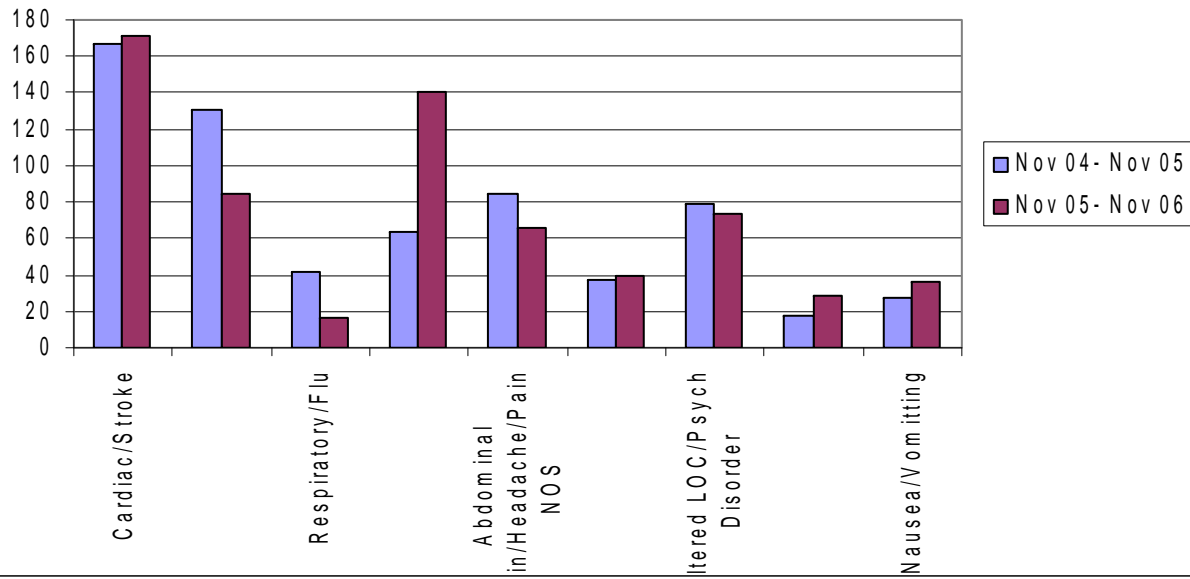
32033



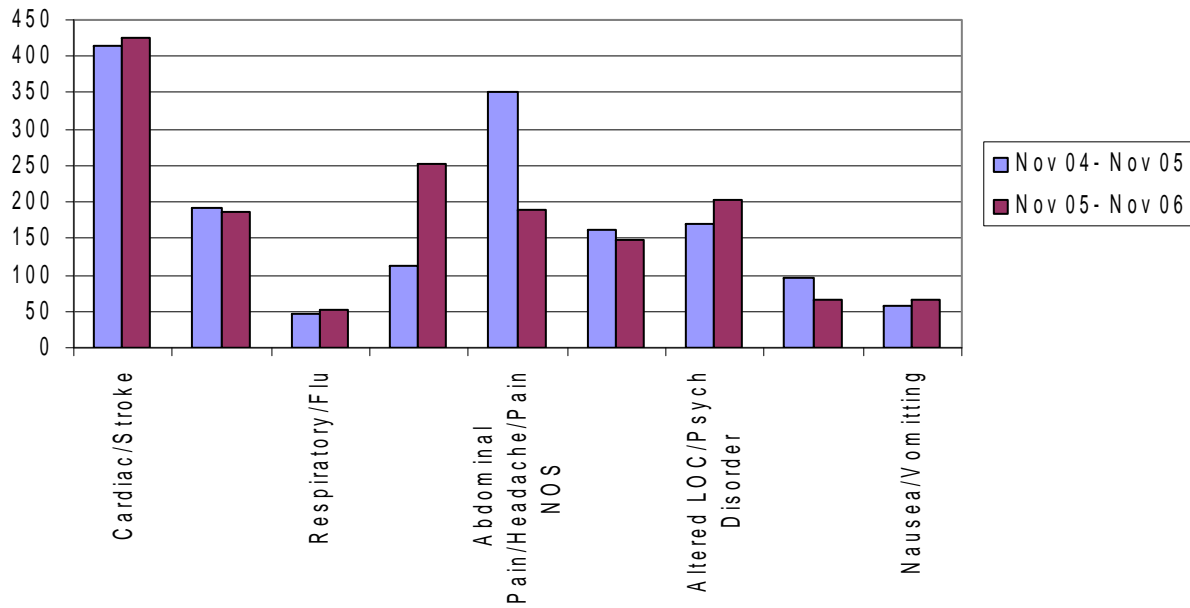
32080



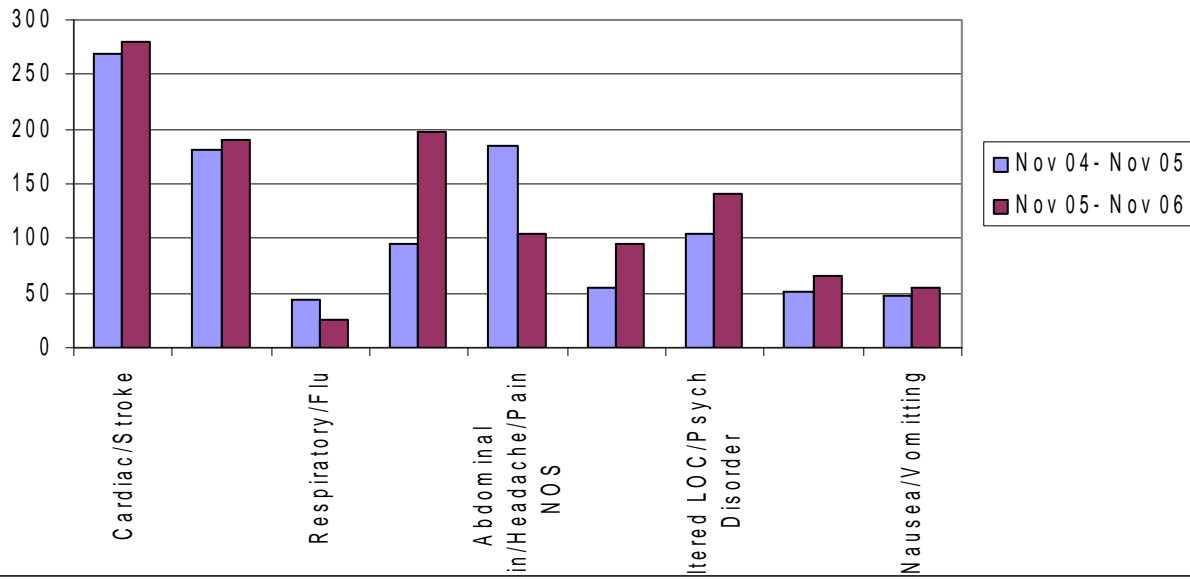
32082



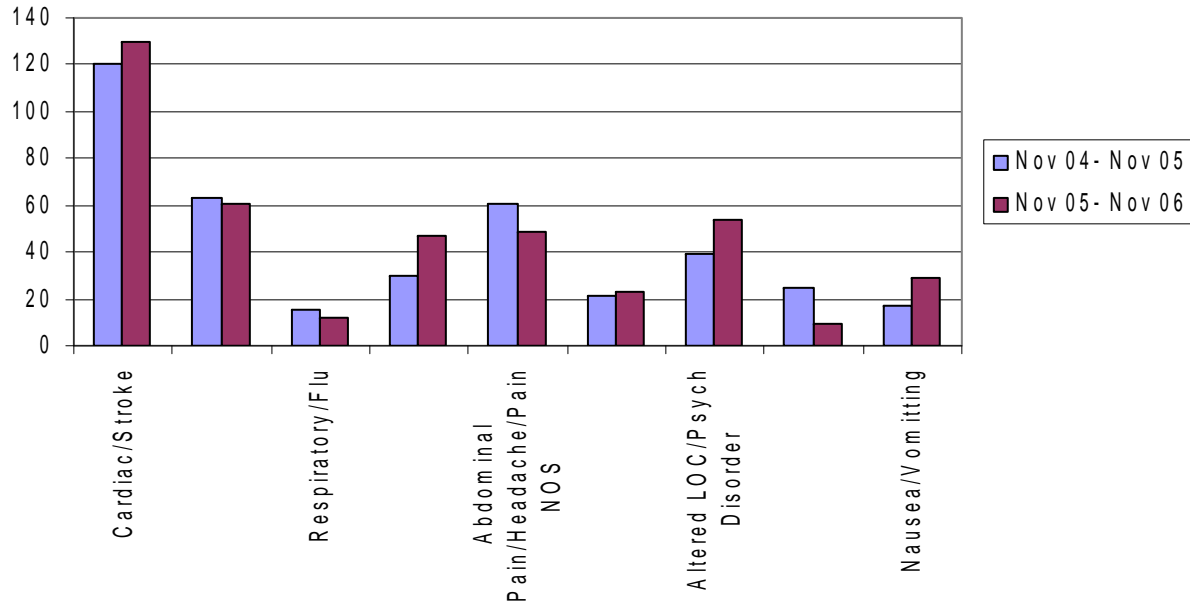
32084



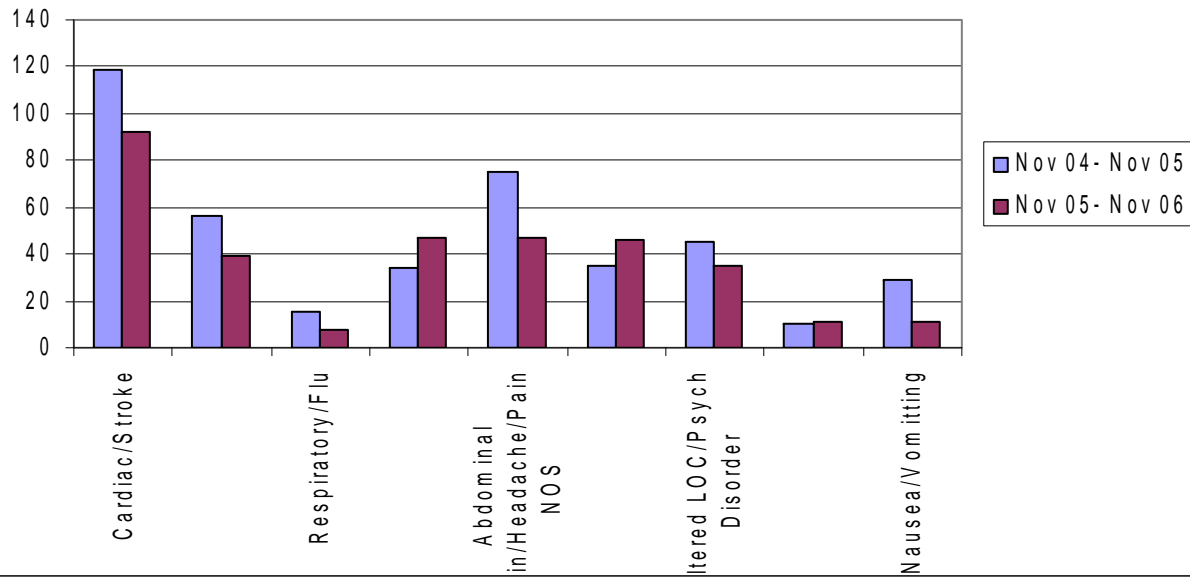
32086



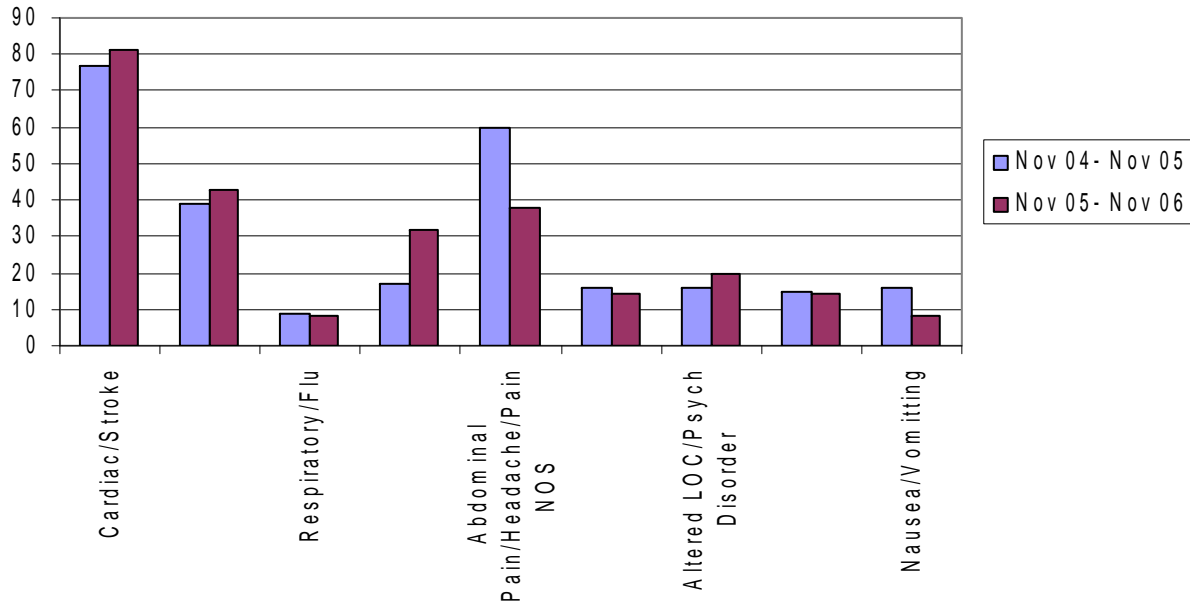
32092



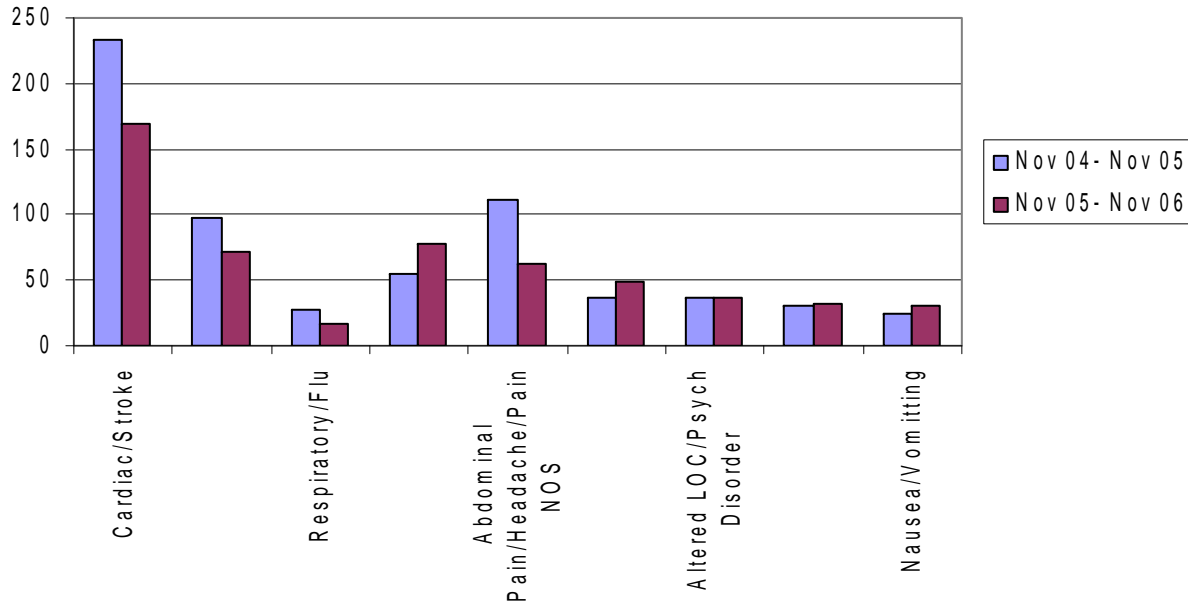
32095



32145



32259



Top 10 Fire Rescue Medical Conditions

- Top 10 medical conditions:
-
- Cardiac includes Cardiac, Stroke/CVA, Cardiac arrests, Hypertension, Hypotension, TIA, and CHF/Pulmonary Edema
- General Illness
- Assessment
- Respiratory Distress includes Respiratory Distress, Flu-like Symptoms, Airway Obstruction, Respiratory Arrest, Inhalation/Toxic Gas
- Syncope
- Abdominal Pain includes Adnominal pain, Pain (NOS) and Headache
- Seizure
- Altered LOC includes Altered Level of Consciousness, Psychiatric disorders
- Diabetes
- Nausea/Vomiting

- Top 5 Reports in 04/05 EXCLUDING Trauma reports are:

- Cardiac/Stroke 24%
- Abdominal Pain, Headache, Pain NOS 17%
- Assessments 14%
- General Illness 11 %

- Top 5 Reports in 05/06 EXCLUDING Trauma reports are:

- Cardiac/Stroke 26%
- Syncope 15%
- Assessments 12%
- Abdominal Pain, Headache, Pain NOS 10%
- Altered LOC/Psych Disorder 10%