

Environmental Scan Top Health/Diagnostic Issues

St Johns County Mental
Health

07/04 - 06/05

ST. JOHNS COUNTY SCHOOLS 2006 - 2007 SCHOOL YEAR

St. Johns County School District
Dr. Joseph Joyner, Superintendent
40 Orange Street
St. Augustine, FL 32084
Ph. (904) 619-7500
www.stjohns.k12.fl.us



0 2 4 Miles

Zip Codes
32033
32080
32081
32082
32084
32086
32092
32095
32145
32224
32259

- 1 - Alice B. Landrum Middle School
- 2 - Allen D. Nease High School
- 3 - Bartram Trail High School
- 4 - Bethune-Cookman College (Spuds Campus)
- 5 - Cunningham Creek Elementary School
- 6 - Durbin Creek Elementary School
- 7 - Evelyn Hamblen Center Gaines Alternative Program
- 8 - First Coast Technical Institute St. Johns Technical High School
- 9 - Flagler College
- 10 - Florida School for the Deaf and Blind
- 11 - Fruit Cove Middle School
- 12 - Gamble Rogers Middle School
- 13 - Hastings Youth Academy
- 14 - Hickory Creek Elementary School
- 15 - John A. Crookshank Elementary School
- 16 - Julington Creek Elementary School
- 17 - Katerlinus Elementary School
- 18 - Marjorie K. Rawlings Elementary School
- 19 - Mill Creek Elementary School
- 20 - Murray Middle School
- 21 - Ocean Palms Elementary School
- 22 - Osceola Elementary School
- 23 - Otis A. Mason Elementary School
- 24 - Pedro Menendez High School
- 25 - Ponte Vedra-Palm Valley Elementary School
- 26 - R.B. Hunt Elementary School
- 27 - Sebastian Middle School
- 28 - South Woods Elementary School
- 29 - St. Augustine High School
- 30 - St. Johns Regional Juvenile Detention Center
- 31 - St. Johns River Community College
- 32 - Switzerland Point Middle School
- 33 - The Webster School
- 34 - Timberlin Creek Elementary School
- 35 - W.D. Hartley Elementary School
- 36 - University of St. Augustine

Map Printed: 10/03/2005
Project ID: 11351



St Johns County Mental Health Dept

- The Top 5 Mental Health Diagnoses reported in this scan are actual Units of Service from July/04 through 06/05 to coincide with the time frame data from the Dept of Education.
- This data is not all inclusive, in that it does not count total numbers of all persons seen
- Alcohol included Alcohol Abuse and Alcohol Dependence
- Total Population Data Set: Census 2000 Summary File (SF 3)
- Total Service Units for SJC Mental Health :
- Equals 36,955 units

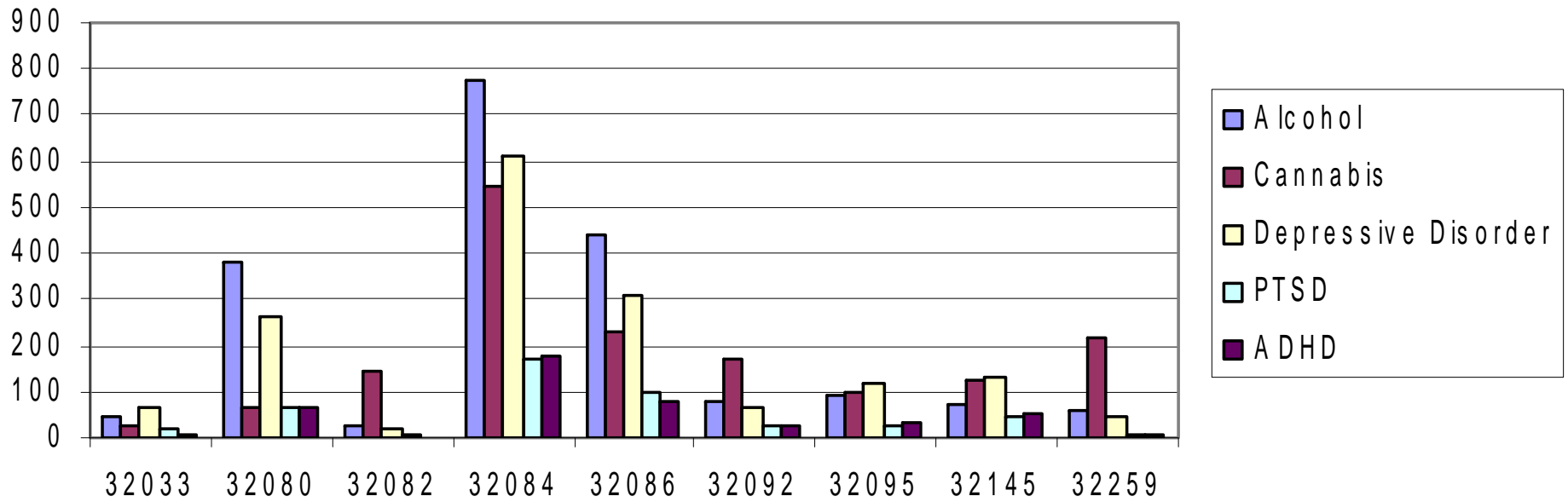
Zip Codes/Population

Zip Codes:

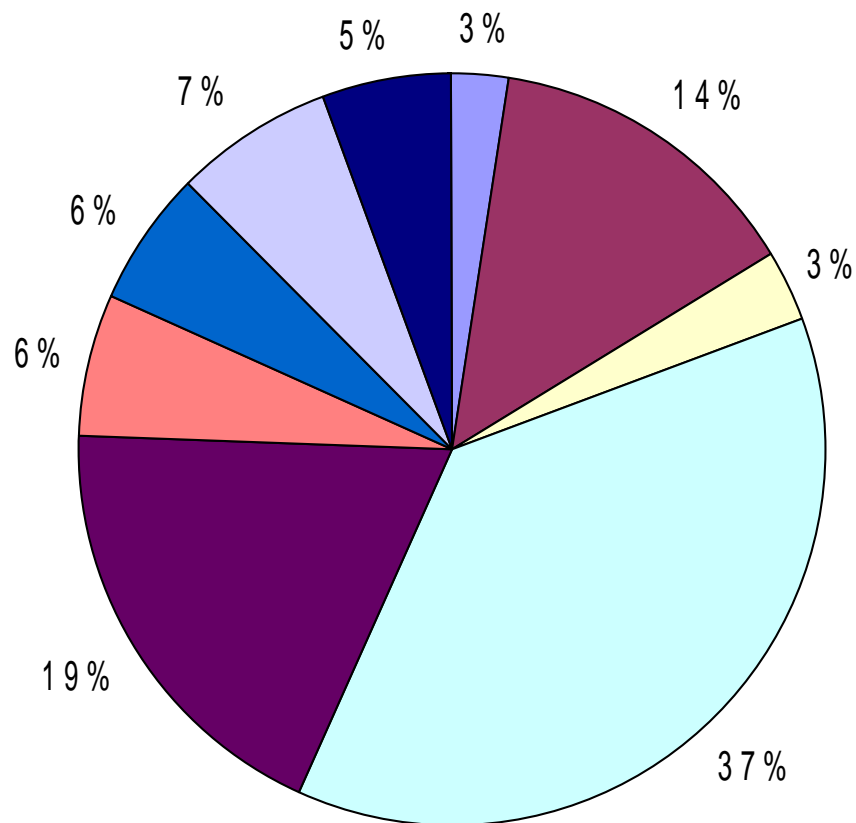
32033	West of 95, South of 214 And North of 206 Pop: 2,133	32092	West of 95, South of 210 and North of 214 Pop: 6,595
32080	St Augustine Beaches Pop: Included in 32084	32095	North of St Augustine, East of 95 And South of 210/Palm Valley Road Pop: 21,071
32082	Ponte Vedra Area Pop: 27,821	32145	Hastings and Flagler Estates Pop: 3,940
32084	St Augustine/Downtown west to 95 Pop: 20,584	32259	Fruit Cove, Julington Creek North of 210 Pop: 18,087
32086	St Augustine: South of 312 Pop: 22,948		
32085	St Augustine Post Office Box		

St Johns County Mental Health

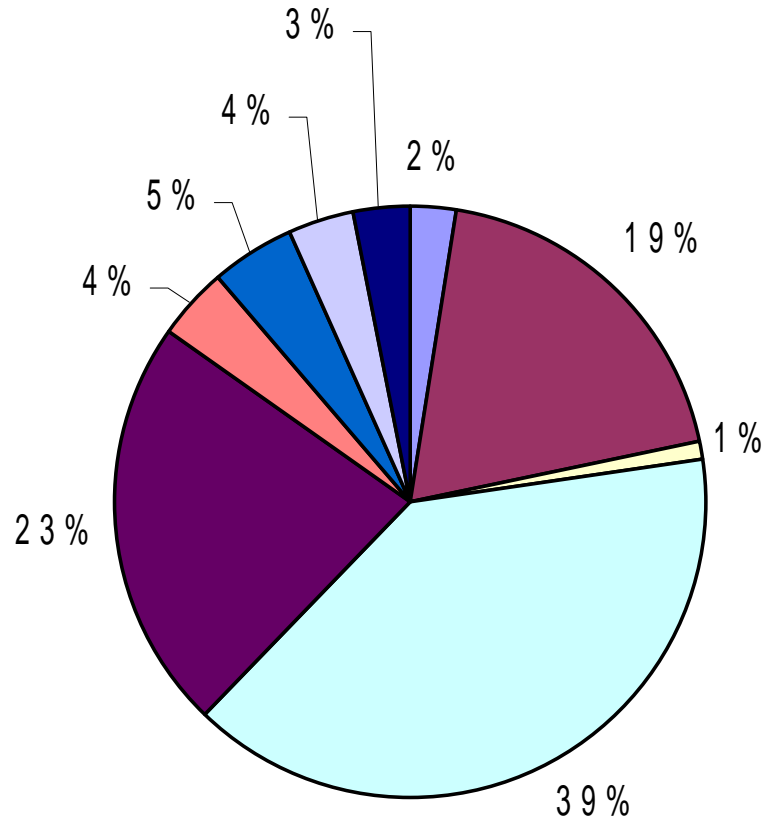
Top 5 Mental Health Diagnoses
(07/04-06/05)



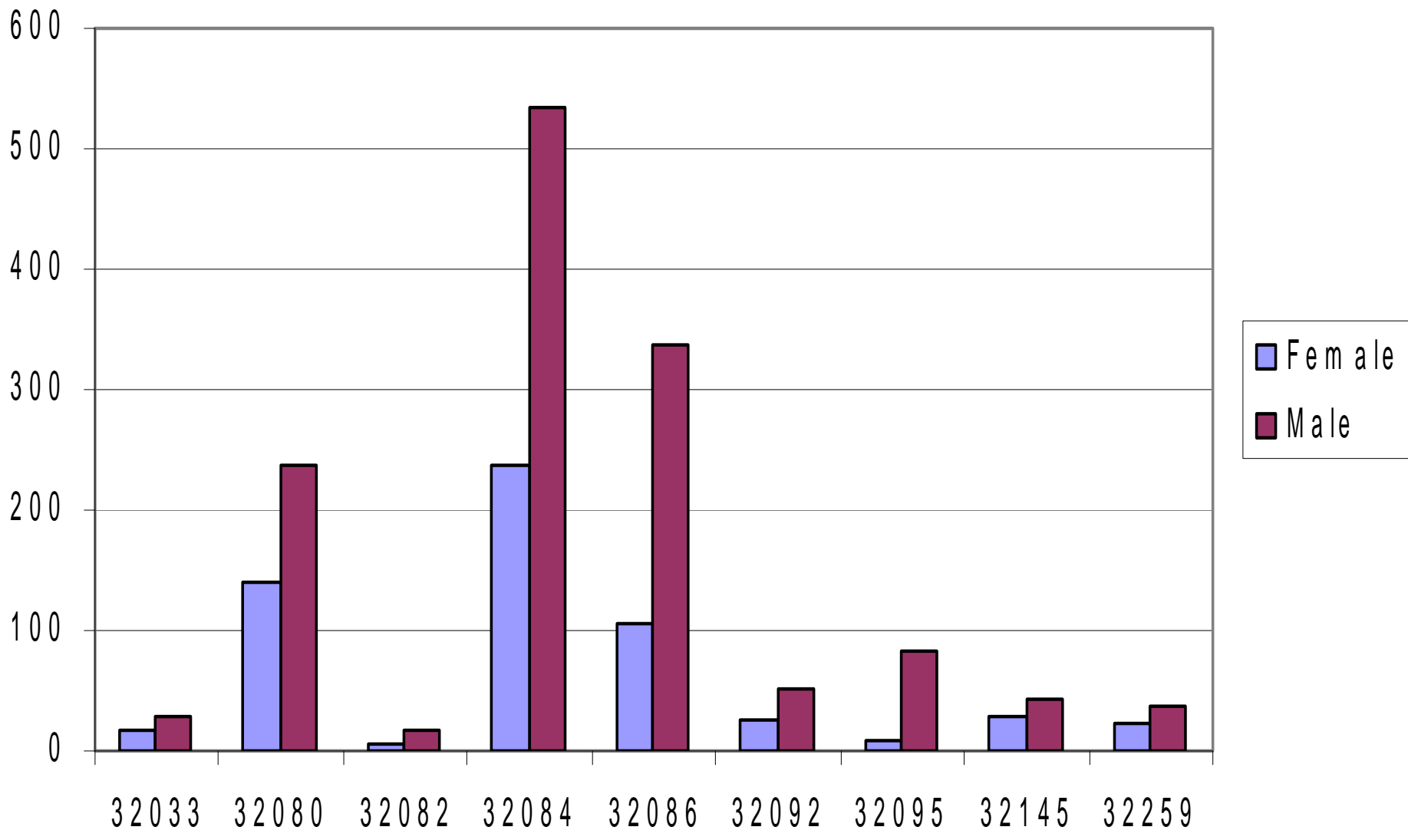
SJC Mental Health-Units of Service
(Based on Top 5 Diagnoses)



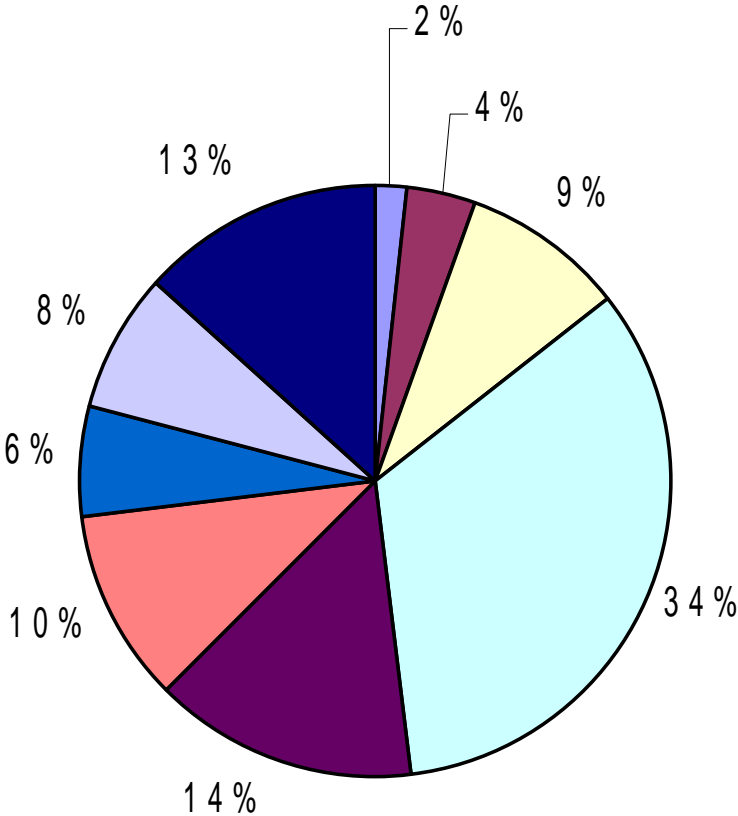
Alcohol (Dependence/Abuse)



Alcohol (Abuse/Dependence) Gender

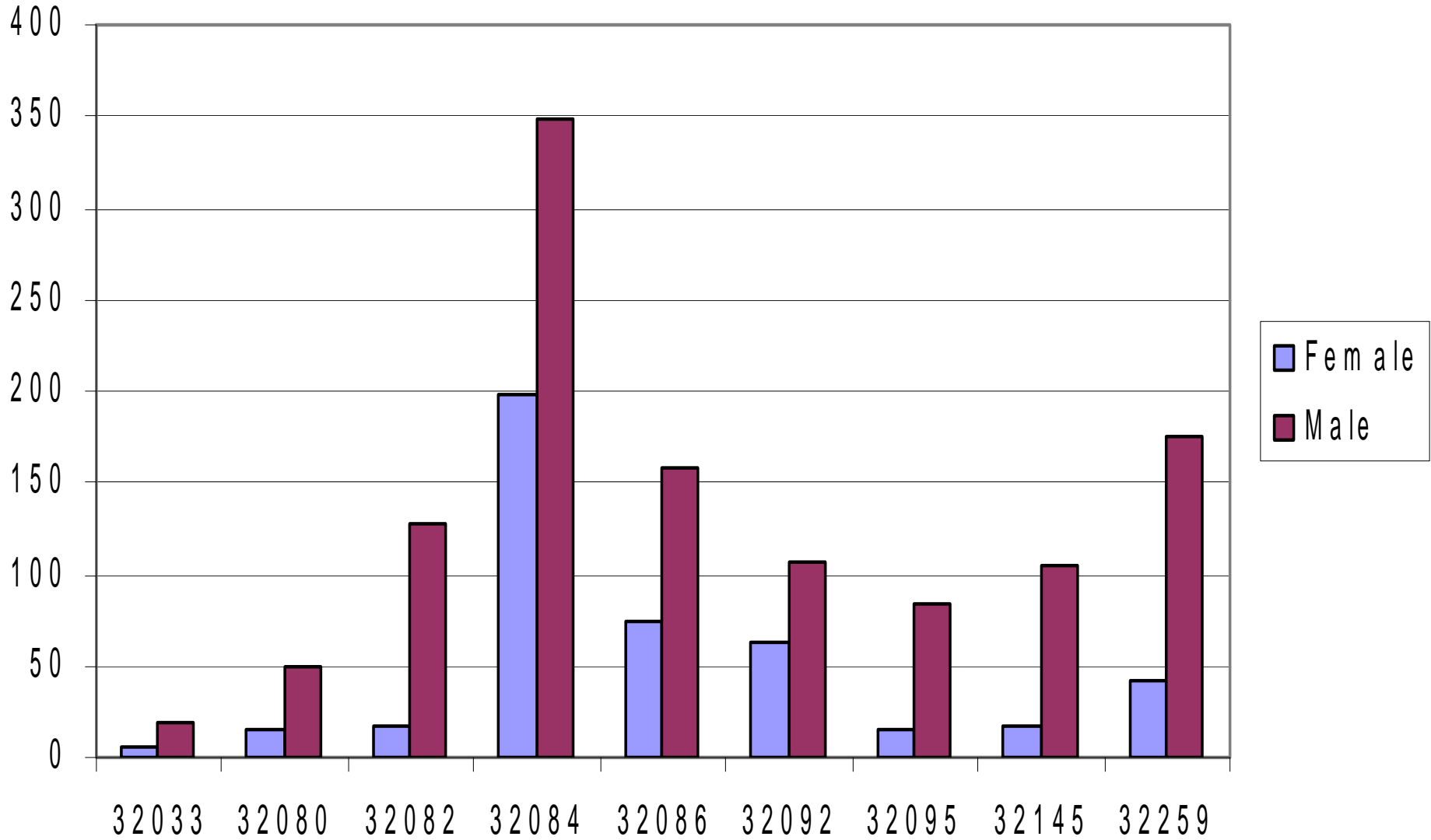


Cannabis (Abuse/Dependence)

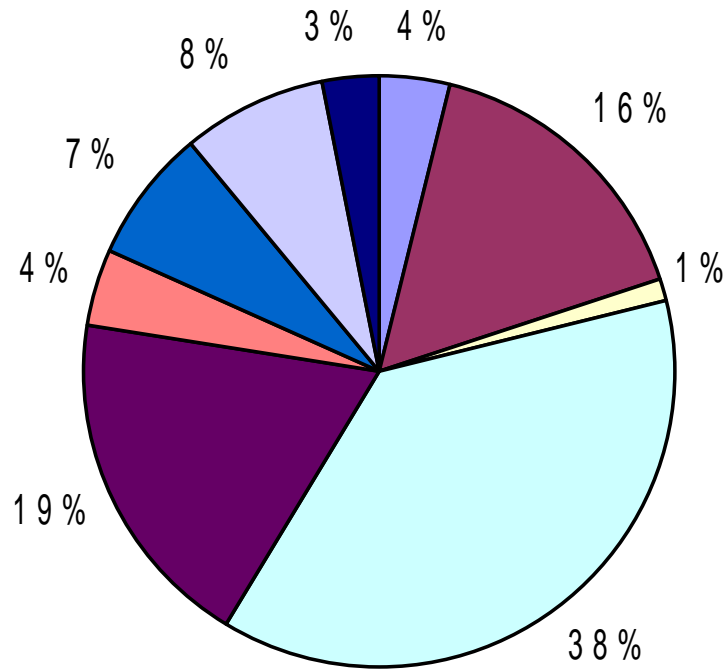


- 32033
- 32080
- 32082
- 32084
- 32086
- 32092
- 32095
- 32145
- 32259

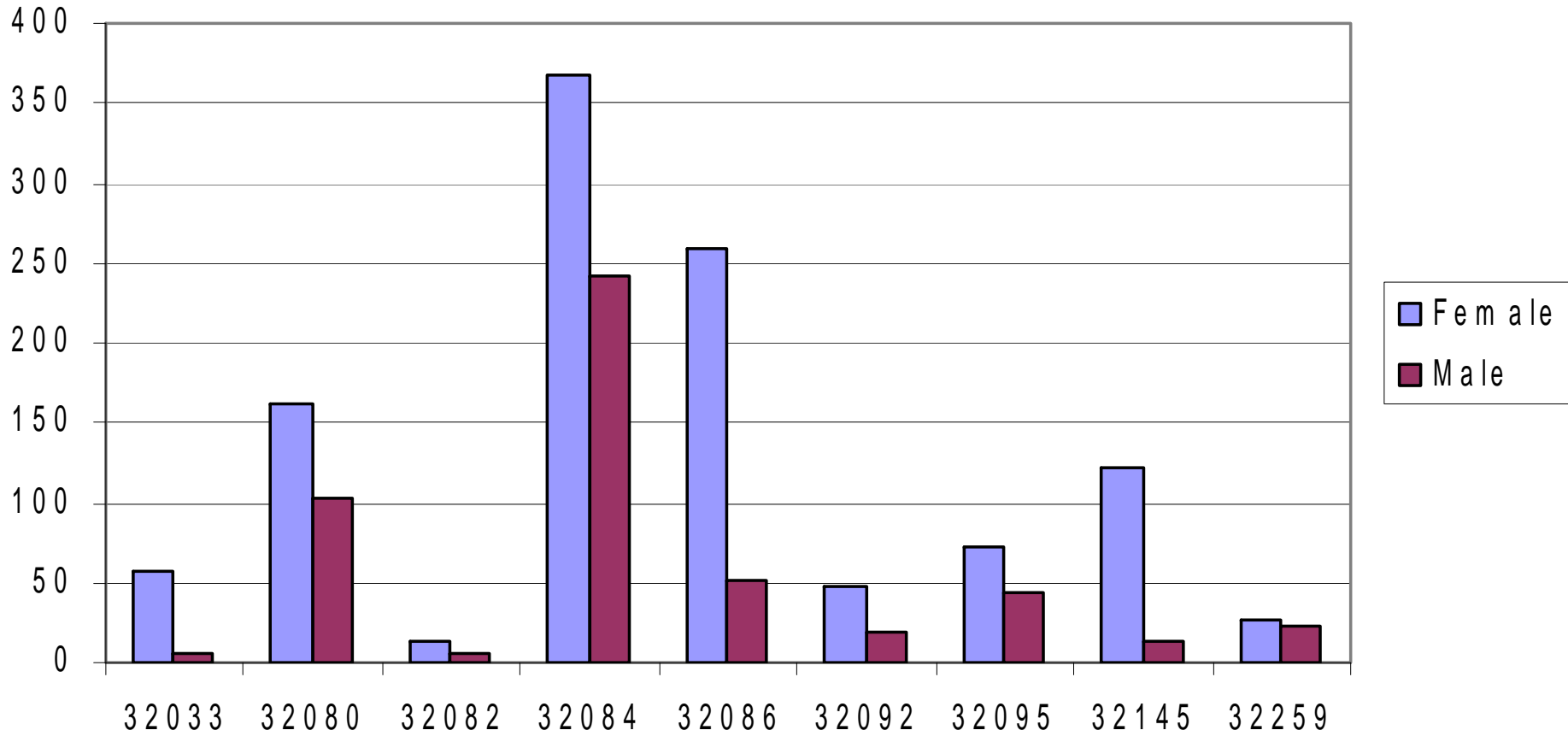
Cannabis (Abuse/Dependence) Gender



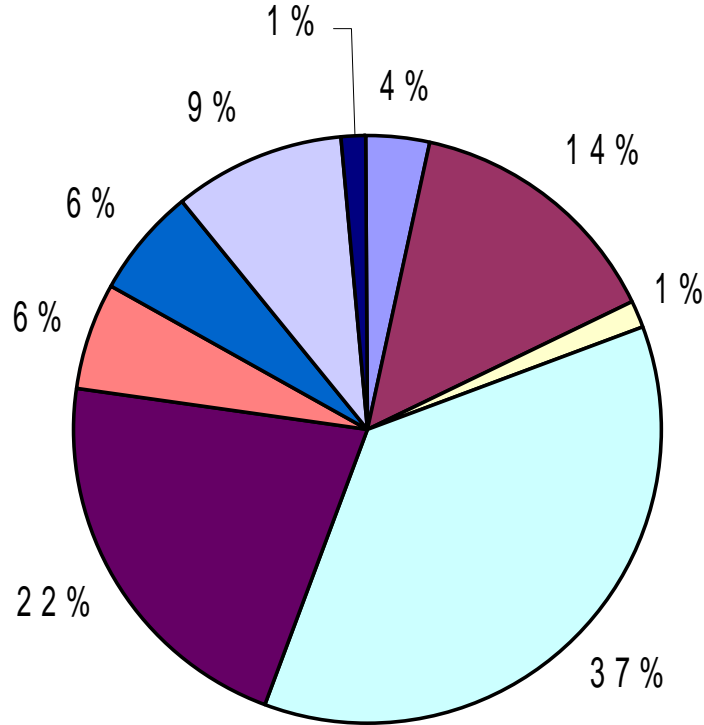
Depressive Disorder



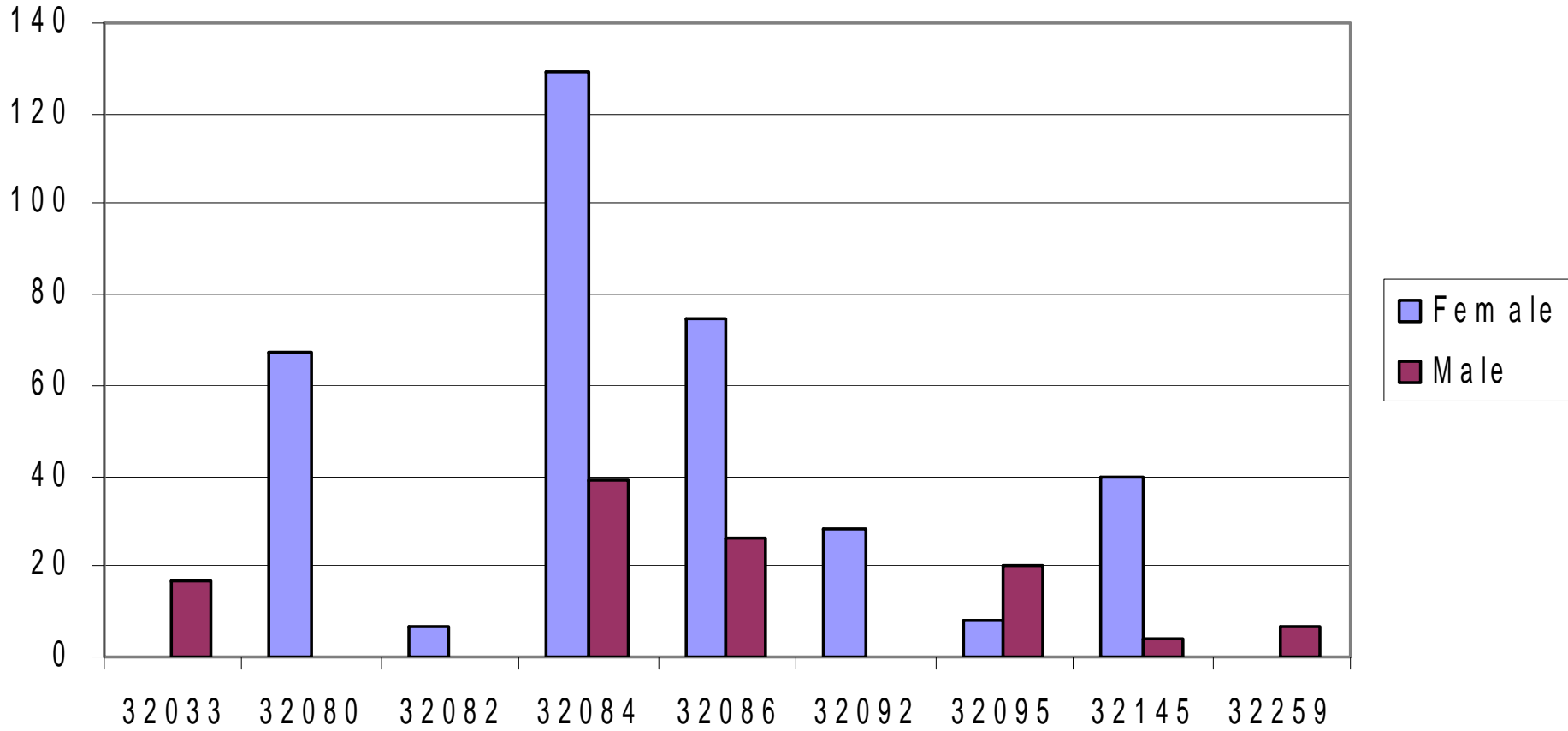
Depressive Disorder Gender



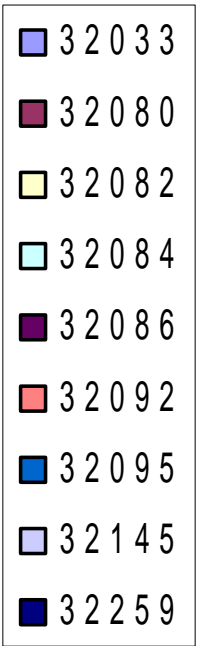
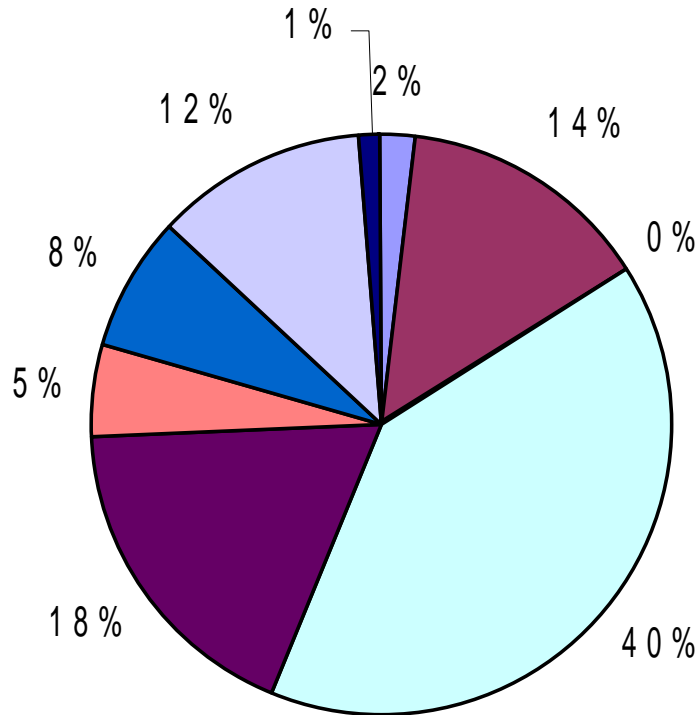
Post-Traumatic Stress Disorder



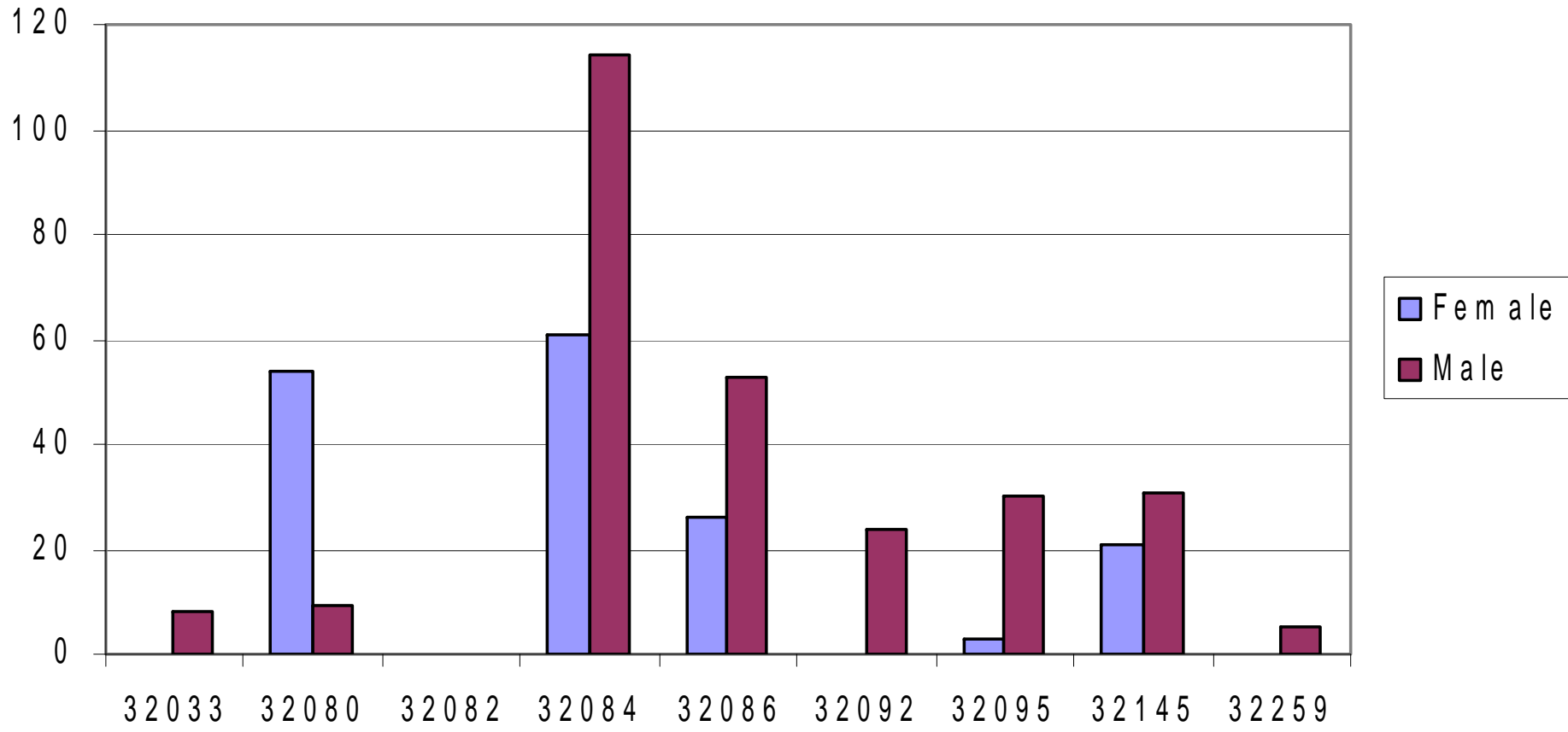
Post-Traumatic Stress Disorder Gender



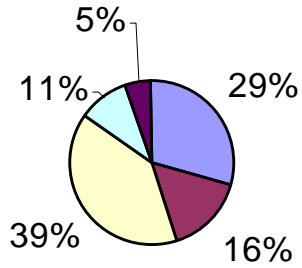
ADHD



ADHD Gender

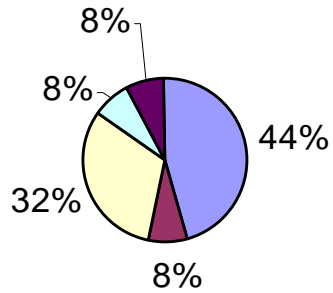


32033



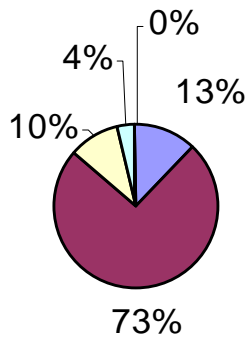
- Alcohol
- Cannabis
- Depressive Disorder
- PTSD
- ADHD

32080



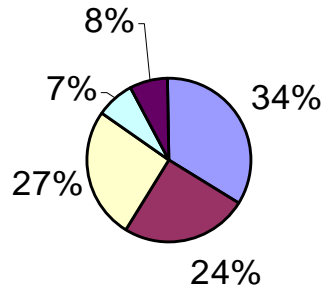
- Alcohol
- Cannabis
- Depressive Disorder
- PTSD
- ADHD

32082



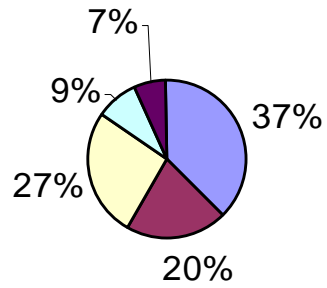
- Alcohol
- Cannabis
- Depressive Disorder
- PTSD
- ADHD

32084



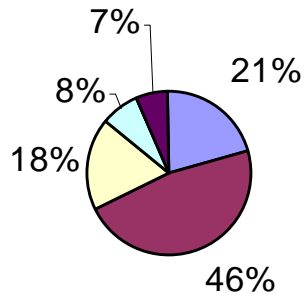
- Alcohol
- Cannabis
- Depressive Disorder
- PTSD
- ADHD

32086



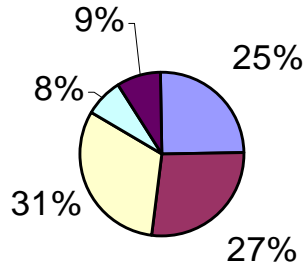
- Alcohol
- Cannabis
- Depressive Disorder
- PTSD
- ADHD

32092



- Alcohol
- Cannabis
- Depressive Disorder
- PTSD
- ADHD

32095



Alcohol

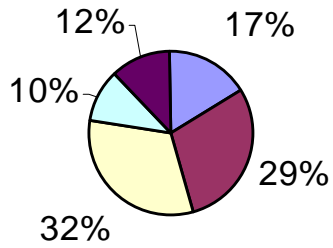
Cannabis

Depressive Disorder

PTSD

ADHD

32145



Alcohol

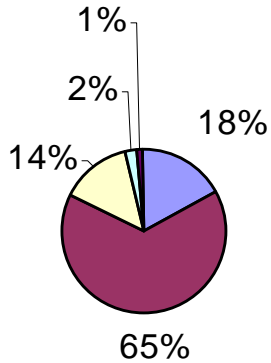
Cannabis

Depressive Disorder

PTSD

ADHD

32259



Alcohol

Cannabis

Depressive Disorder

PTSD

ADHD

Summary

- The Top 5 diagnoses with SJC Mental Health are:
- Alcohol Dependence and Abuse: 32%
- Cannabis Dependence and Abuse: 26%
- Depressive Disorder: 26%
- Post-Traumatic Stress Disorder: 7%
- Attention Deficit/Hyperactivity D/O: 7%