

Environmental Scan Top Maltreatment Findings

St Johns County By Zip Code
July 2005 - June 2006

ST. JOHNS COUNTY SCHOOLS 2006 - 2007 SCHOOL YEAR

St. Johns County School District
 Dr. Joseph Joyner, Superintendent
 40 Orange Street
 St. Augustine, FL 32084
 Ph. (904) 819-7500
 www.stjohns.k12.fl.us



0 2 4 Miles

Zip Codes
32033
32080
32081
32082
32084
32086
32092
32095
32145
32224
32259

- 1 - Alice B. Landrum Middle School
- 2 - Allen D. Nease High School
- 3 - Bartram Trail High School
- 4 - Bethune-Cookman College (Spuds Campus)
- 5 - Cunningham Creek Elementary School
- 6 - Durbin Creek Elementary School
- 7 - Evelyn Hamblen Center Gaines Alternative Program
- 8 - First Coast Technical Institute St. Johns Technical High School
- 9 - Flagler College
- 10 - Florida School for the Deaf and Blind
- 11 - Fruit Cove Middle School
- 12 - Gamble Rogers Middle School
- 13 - Hastings Youth Academy
- 14 - Hickory Creek Elementary School
- 15 - John A. Crookshank Elementary School
- 16 - Julington Creek Elementary School
- 17 - Katerlinus Elementary School
- 18 - Marjorie K. Rawlings Elementary School
- 19 - Mill Creek Elementary School
- 20 - Murray Middle School
- 21 - Ocean Palms Elementary School
- 22 - Osceola Elementary School
- 23 - Otis A. Mason Elementary School
- 24 - Pedro Menendez High School
- 25 - Ponte Vedra-Palm Valley Elementary School
- 26 - R.B. Hunt Elementary School
- 27 - Sebastian Middle School
- 28 - South Woods Elementary School
- 29 - St. Augustine High School
- 30 - St. Johns Regional Juvenile Detention Center
- 31 - St. Johns River Community College
- 32 - Switzerland Point Middle School
- 33 - The Webster School
- 34 - Timberlin Creek Elementary School
- 35 - W.D. Hartley Elementary School
- 36 - University of St. Augustine

Map Printed: 10/03/2005
 Project ID: 11351



Maltreatments

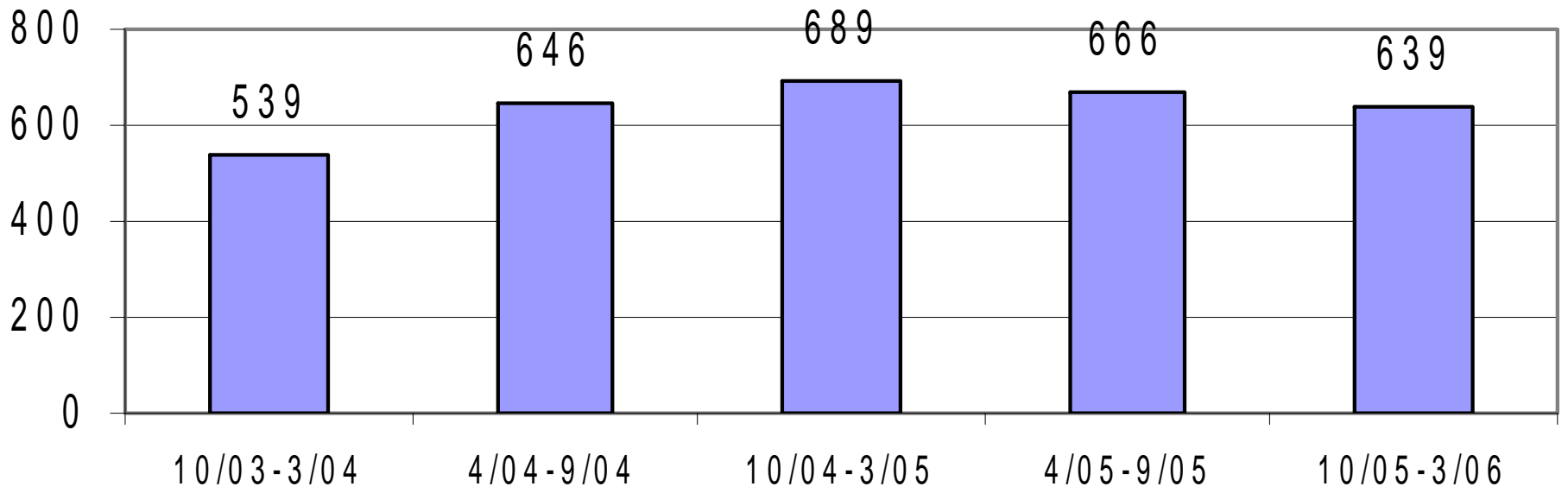
- Maltreatments reported in this scan are a compilation of Child Abuse, Neglect and Abandonment Reports via Child Safety Assessments with Some Indication and/or Verified findings of Abuse and Neglect by the Department of Children and Families.
- Maltreatments Do Not represent the number of children being abused as some CSA's may have multiple children and multiple maltreatments.
- Maltreatments Do Not represent the number of children being adjudicated dependent and/or being removed from their homes
- Of importance to note is one maltreatment, Death of a Child due to Abuse is not being reported on this scan due to confidentiality.
- Total Population Data Set: Census 2000 Summary File (SF 3)

Zip Codes/Population

Zip Codes:

32033	West of 95, South of 214 And North of 206 Pop: 2,133	32092	West of 95, South of 210 and North of 214 Pop: 6,595
32080	St Augustine Beaches Pop: Included in 32084	32095	North of St Augustine, East of 95 And South of 210/Palm Valley Road Pop: 21,071
32082	Ponte Vedra Area Pop: 27,821	32145	Hastings and Flagler Estates Pop: 3,940
32084	St Augustine/Downtown west to 95 Pop: 20,584	32259	Fruit Cove, Julington Creek North of 210 Pop: 18,087
32086	St Augustine: South of 312 Pop: 22,948		
32085	St Augustine Post Office Box		

Child Safety Assessments
Child Abuse Reports

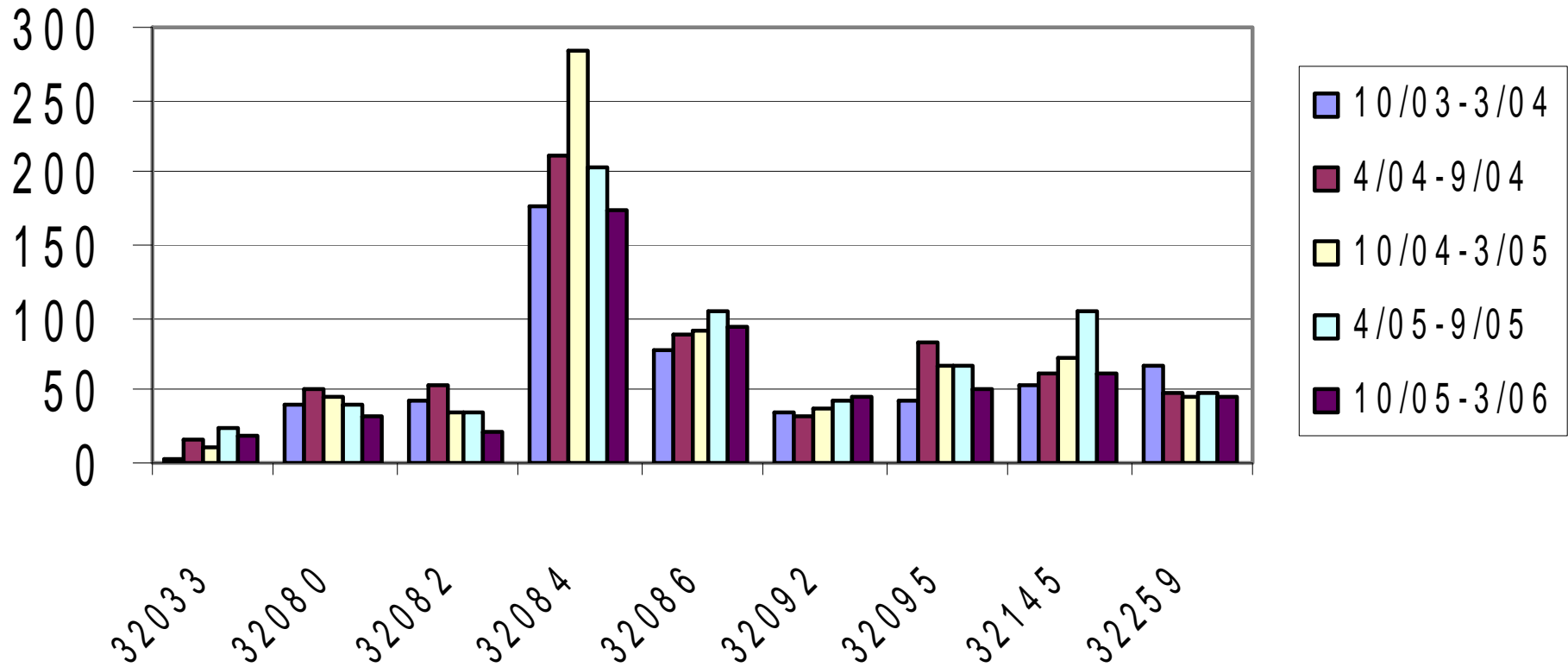


TOTAL SERVED

Actual Numbers of CSA's by Zip Code

TOTAL SERVED		32033	32080	32082	32084	32086	32092	32095	32145	32259	
10/03-3/04	539	10/03-3/04	4	40	42	177	78	34	44	53	67
4/04-9/04	646	4/04-9/04	17	50	54	212	89	31	84	62	47
10/04-3/05	689	10/04-3/05	10	45	36	283	91	38	68	73	45
4/05-9/05	666	4/05-9/05	23	39	34	203	104	43	66	104	47
10/05-3/06	639	10/05-3/06	19	32	21	175	95	45	51	62	46

Child Safety Assessments



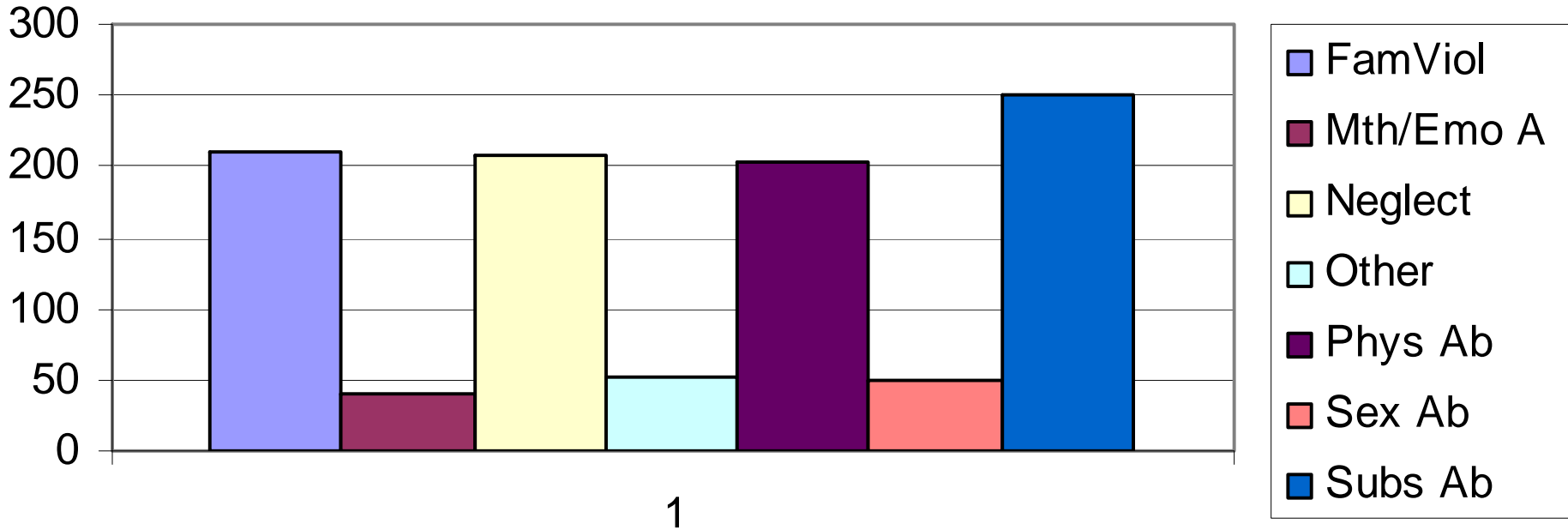
Maltreatments by Category

- Physical Abuse - Bruises, welts, cuts, punctures, bites, burns, scalds, bone fractures, asphyxiation, suffocation, Deadly weapon injury, beatings, excessive corporal punishment, other physical injuries
- Sexual Abuse - Sexual molestation, sexual assault, sexual battery other
- Mental/Emotional Abuse - Inadequate/Excessive Restraint Bizarre punishment/Confinement, Mental Injury, Other Mental Injury
- Substance Abuse - Substance misuse, Substance Exposed, Alcohol Exposed
- Neglect - Inadequate supervision, abandonment, Conditions Hazardous, Inadequate food, clothing or shelter, Failure to thrive, Medical neglect
- Family Violence - Family Violence threatens Child
- Other - Parent Incarcerated, Child on Child Sexual abuse, Parent needs assistance, Failure to Protect

St Johns County

Some Indication and Verified Child Maltreatments

07/05 - 06/06



FamViol – Family Violence

Mth/Emo A – Mental/Emotional Abuse

Neglect

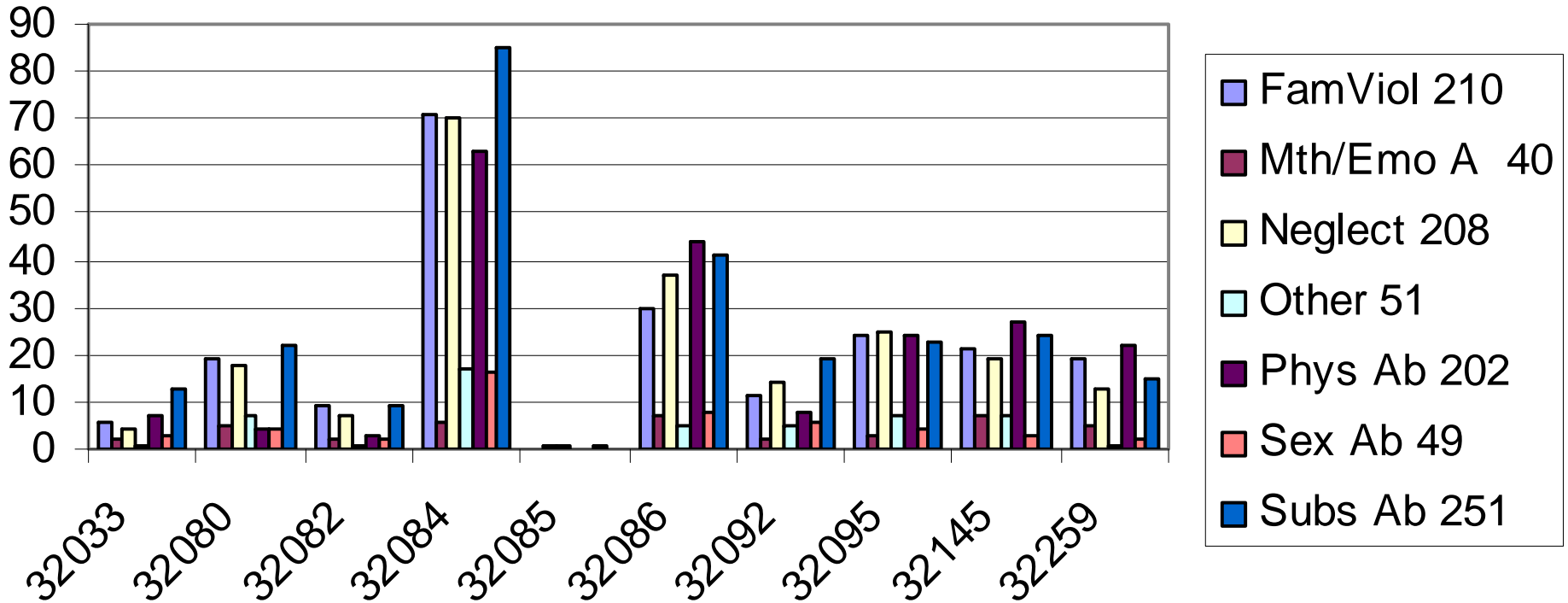
Other

Phys Ab – Physical Abuse

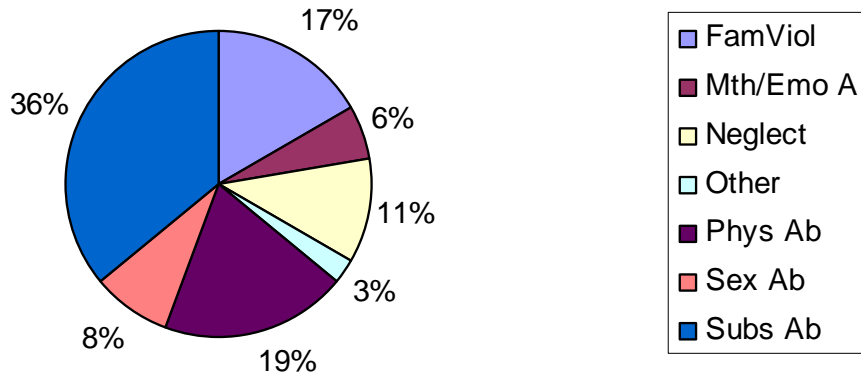
Sex Ab – Sexual Abuse

Subs Ab – Substance Abuse

Some Indication and Verified Maltreatments 07/05-06/06

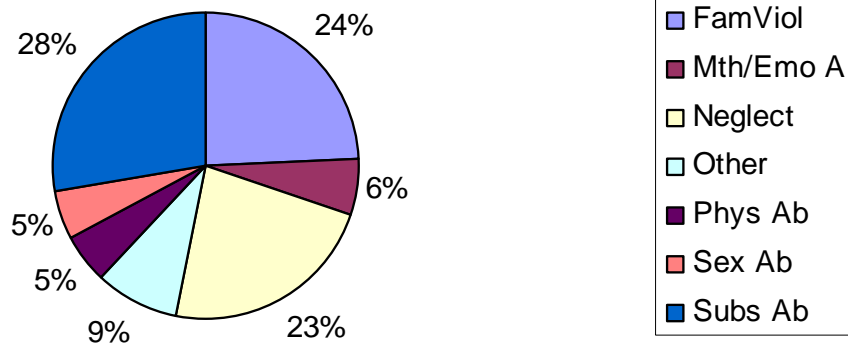


32033



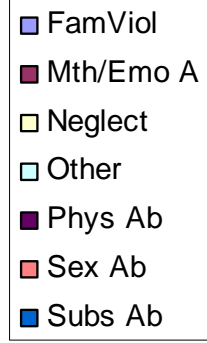
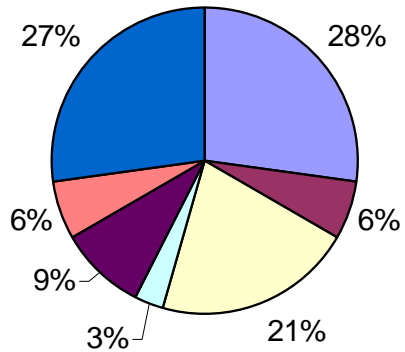
West of 95, South of 214
And North of 206
Pop: 2,133

32080



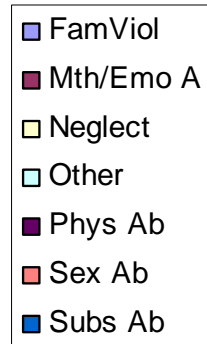
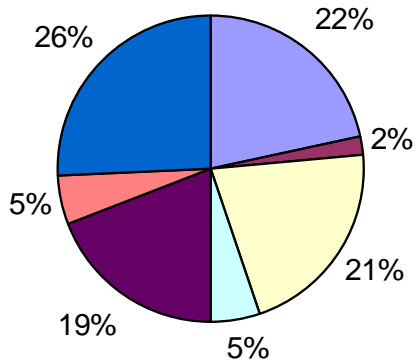
St Augustine Beaches
Pop: Included in 32084

32082



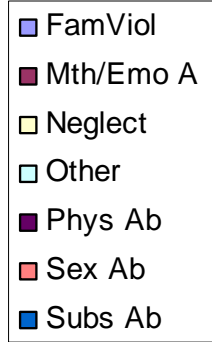
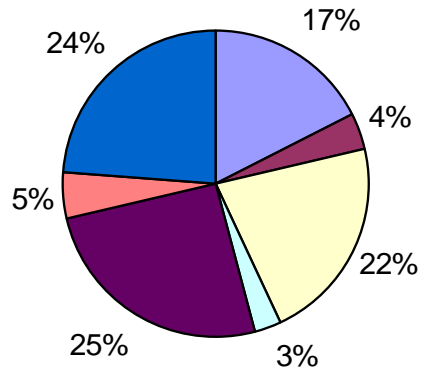
Ponte Vedra Area
Pop: 27,821

32084



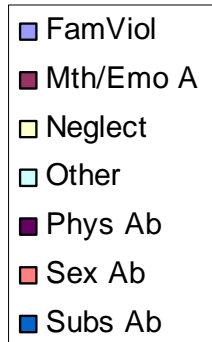
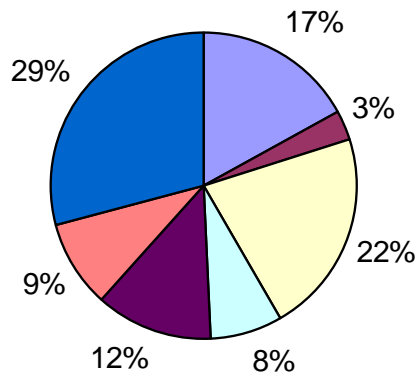
St Augustine/Downtown west
to 95
Pop: 20,584

32086



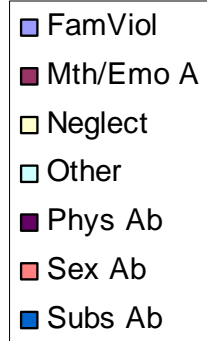
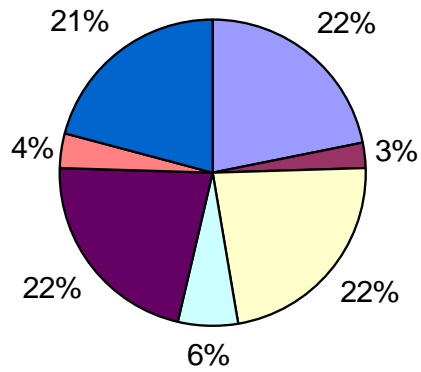
St Augustine: South of 312
Pop: 22,948

32092



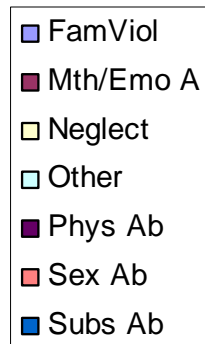
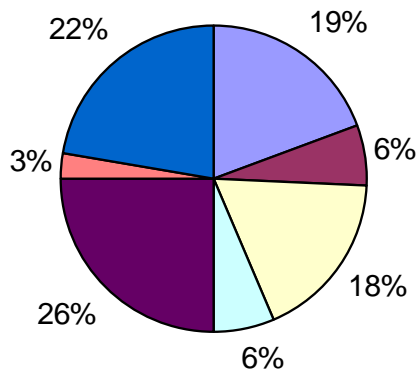
West of 95, South of 210
and North of 214
Pop: 6,595

32095



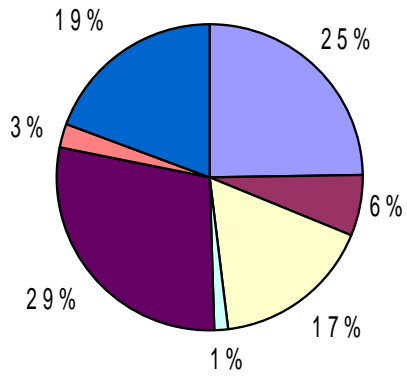
North of St Augustine,
East of 95 And South
of 210/Palm Valley Road

32145



Hastings and Flagler Estates
Pop: 3,940

32259



Fruit Cove, Julington Creek
North of 210
Pop: 18,087

Demographic Characteristics of Verified Caregivers Responsible for Abuse/Neglect

Florida Department of Children and Families

Statewide by District/Region by County

Reports Received During Fiscal Year 2004-2005

Report Run Date:09/09/2005

Page 2 of 5

Table B-9

Dist.	County	AGE												SEX						RACE/ETHNICITY								Totals		
		Under 18 yrs.		18-25yrs.		26-33yrs.		34-41yrs.		42+ yrs.		Unknown		Male		Female		Unknown		White		Black		Other		Hispanic Ethnicity				
		#	%	#	%	#	%	#	%	#	%	#	%	#	%	#	%	#	%	#	%	#	%	#	%	#	%	#	%	
4																														
	Baker	2	1.50	39	29.32	45	33.83	30	22.56	17	12.78	0	0.00	65	48.87	67	50.38	1	0.75	119	89.47	13	9.77	1	0.75	0	0	133	0.35	
	Clay	7	1.12	136	21.76	161	25.76	199	31.84	122	19.52	0	0.00	337	53.92	285	45.60	3	0.48	528	84.48	82	13.12	18	2.88	21	3.36	625	1.63	
	Duval	31	1.45	624	29.19	671	31.38	483	22.59	329	15.39	0	0.00	1,073	50.19	1,060	49.58	5	0.23	1,104	51.64	997	46.63	45	2.10	69	3.23	2,138	5.58	
	Nassau	2	1.07	45	24.06	50	26.74	54	28.88	36	19.25	0	0.00	90	48.13	97	51.87	0	0	163	87.17	19	10.16	5	2.67	5	2.67	187	0.49	
	St Johns	5	1.15	94	21.61	140	32.18	114	26.21	82	18.85	0	0.00	241	55.40	191	43.91	3	0.69	352	80.92	77	17.70	6	1.38	10	2.30	435	1.14	
	Subtotal D-4	47	1.34	938	26.66	1,067	30.33	880	25.01	586	16.66	0	0.00	1,806	51.34	1,700	48.32	12	0.34	2,266	64.41	1,188	33.77	75	2.13	105	2.98	3,518	9.18	
	Statewide	419	1.09	9,567	24.97	11,324	29.56	9,438	24.64	7,563	19.74	0	0.00	19,293	50.36	18,870	49.25	148	0.39	26,726	69.76	10,744	28.04	992	2.59	4,389	11.46	38,311	100.00	